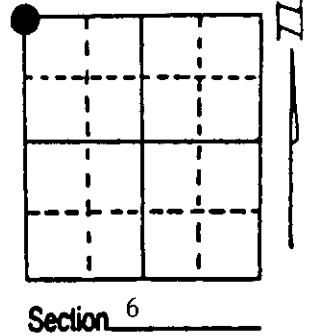


U.S. PUBLIC LAND SURVEY MONUMENT RECORD

Note: This form is intended and designed to fulfill all requirements of Wisconsin Administrative Code, Chapter A-E 7.08 U.S. Public Land Survey Monument Record (3) (a) (b) (c) (d) (e) (f) (g) (h) (i). An additional sheet may be added if necessary to conform with said requirements.

(a) Corner location: Township 37 North
 Range 8 East/West
 Town/City/Village Newbold
 County Oneida



(b) (f) (g) (h) Description of monument found at this corner and if it was accepted, state all evidence (material, testimonial, occupational, plats, records, other monuments) used as a basis for accepting. If not accepted or if nothing was found, state evidence used as basis for establishing location. If reestablished through lost corner proportionate methods, indicate all monuments, distances and directions used to establish. Indicate type of monument found or set and sign post.

9/5/1860 - Alfred Millard ran West between Section 6 and 31 and at 77.16 chains fell 1.04 chains North of temporary corner. He set a wood post for this Township Corner with four BTs:

- | | |
|-------------------------------|--------------------------------|
| 10" Tamarack, N11°E, 15 Links | 10" Tamarack, S46°W, 25 Links |
| 8" Tamarack, S30°E, 17 Links | 9" Spruce, N66 1/2°W, 30 Links |

9/18/1936 - Vern Maine found all corner evidence grubbed out by Highway Construction. He restored this corner and set a 2" x 60" iron pipe 36 Links Southerly of the Township Corner as a Witness Corner.

2/17/1954 - F.R. Wincentzen called iron pipe in road for corner with W.C. 36 Links South.
 1965 - State Highway Department called W.C. 36 Links South.

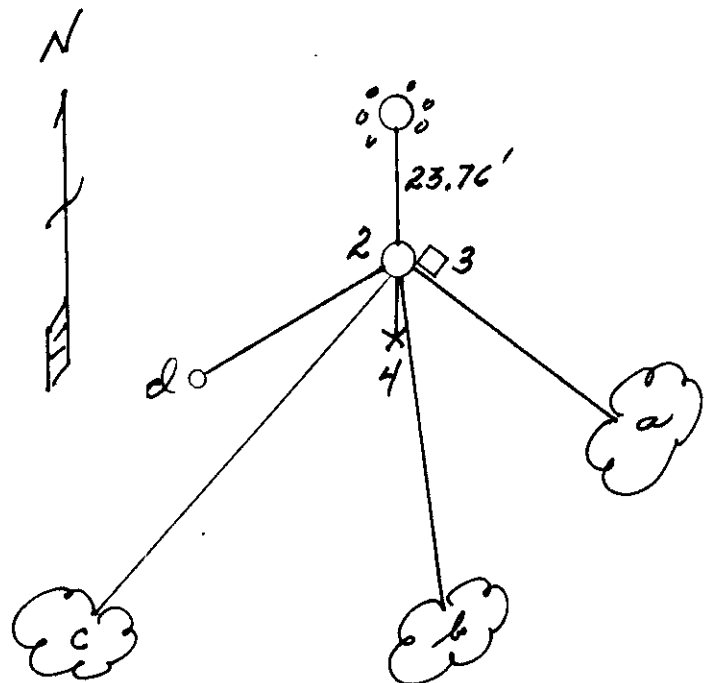
8/1/1989 - Milo E. Stefan tied off Witness Corner - not knowing where true corner was.

11/21/1996 - Milo E. Stefan ran traverse from C-1 to W.C. to A-1. We restored this Township Corner 36 Links Northerly from the W.C. - our measured distance for the 1/2 mile was 2716.95'. Maine's was 2719.54'.

(c) (d) (e) Plan view of corner with ties to at least 4 witness monuments. If in disagreement with previously established corner, show the distances between the two corners and also indicate the ties to the disputed corner.

- 1) 2" x 30" Aluminum monument in mound of stone.
- 2) 2" x 60" iron pipe/brass cap.
 - a. 6" Tamarack, S53°E, 93.88'
 - b. 7" Cedar, S8°E, 108.65'
 - c. 8" Tamarack, S35°W, 74.32'
 - d. Power Pole #239, S68°W, 24.12'.
- 3) 6" x 6" x 36" Scribed Cedar Post (along side W.C.)
- 4) Plastic Sign Post, 1.0' South of W.C.

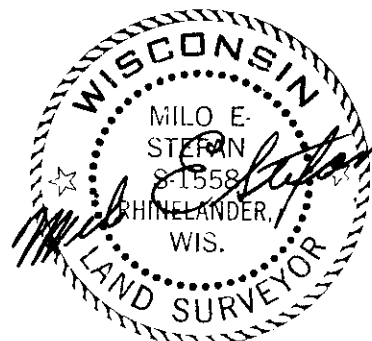
Distance to nail in side of BTs.
 Stump blazes and scribed "BT".
 BT tags on face of BTs.



(i) I, Milo E. Stefan
 (type or print name) certify that the corner location on this record was determined by me or under my direction and control and that this U.S. Public Land Survey Monument Record is correct and complete to the best of my knowledge and belief.

Milo E. Stefan
 Signature

December 9, 1996
 Date



Index No. A-1

JAN 12 2023

KYLE J. FRANSON
REGISTER OF DEEDS

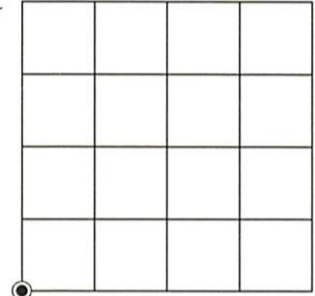
U.S. PUBLIC LAND SURVEY MONUMENT RECORD

Note: This form is intended and designed to fulfill all requirements of the Wisconsin Administrative Code, Chapter A-E 7.08 U.S. Public Land Monument Record (3)(a)(b)(c)(d)(e)(f)(g)(h)(i). An additional sheet may be added if necessary to conform with said requirements.

(a) CORNER LOCATION: WISCRS - Oneida County
 Southwest Corner of Section 31 North: 199,249.32 USft
 Township 38 North East: 228,865.46 USft
 Range 8 East Datum: NAD 83(2011) ep. 2010.00
 Town of Newbold GNSS Method: RTN - Direct
 County of Oneida GNSS Control: WISCRS VRS

(RECORDING AREA)

SECTION 31



(b) HISTORY OF ORIGINAL CORNER ESTABLISHMENT

Original Surveyor:
 Date of Survey: Commenced
 Completed
 Original B.T.'S

SEE PREVIOUS U.S.P.L.S. MONUMENT
 RECORD DATED DECEMBER 9, 1996

(f)(g)(h) DESCRIPTION OF MONUMENT FOUND AT THIS CORNER AND IF IT WAS ACCEPTED, STATE ALL EVIDENCE (MATERIAL, TESTIMONIAL, OCCUPATIONAL, PLATS, RECORD, OTHER MONUMENTS) USED AS A BASIS FOR ESTABLISHING LOCATION. IF NOT ACCEPTED OR IF NOTHING WAS FOUND, STATE EVIDENCE USED AS BASIS FOR ESTABLISHING LOCATION. IF REESTABLISHED THROUGH LOST CORNER PROPORTIONATE METHODS, INDICATE ALL MONUMENTS, DISTANCES AND DIRECTIONS USED TO ESTABLISH. INDICATE TYPE OF MONUMENT AND SIGN POST FOUND OR SET.

This is a perpetuation of a previous U.S.P.L.S. Monument Record by Milo E. Stefan, RLS-1558, dated December 9, 1996, and filed in the office of the Oneida County Register of Deeds. A complete history of the corner can be found on the previous monument record.

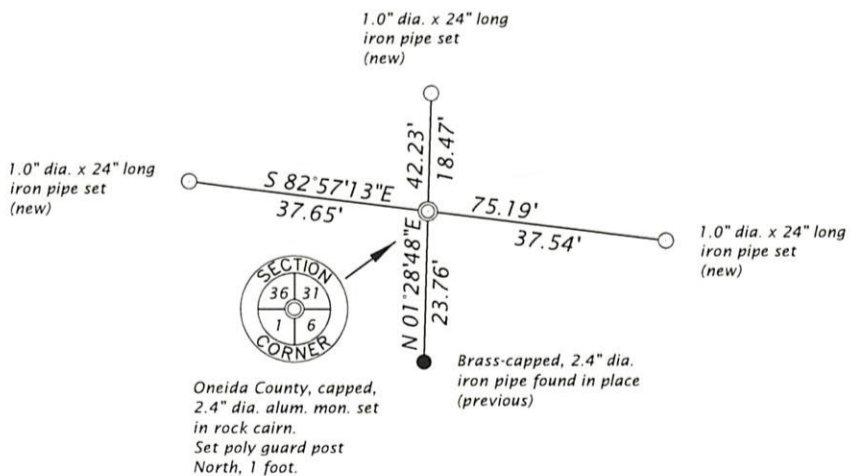
June 1, 2022, James D. Rein, PLS No. S-1234, we found, and I accepted, the Oneida County capped 2.4" dia. aluminum monument set by Stefan in 1996, with the top damaged. We replaced the damaged monument at its base position. We also recovered the brass capped, 2.4" dia. iron pipe, at record position. Stefan's southeasterly and southwesterly Tamarack's and southeasterly cedar are now gone. See below for updated references.

(c)(d)(e) PLAN VIEW OF CORNER WITH TIES TO AT LEAST 4 WITNESS MONUMENTS. IF IN DISAGREEMENT WITH PREVIOUSLY ESTABLISHED CORNER, SHOW THE DISTANCE BETWEEN THE TWO CORNERS AND ALSO INDICATE THE TIES TO THE DISPUTED CORNER.

Bearings are
Oneida County Grid



Scale: 1" = 30'



(i) I, JAMES D. REIN, PROFESSIONAL LAND SURVEYOR NO. S-1234 HEREBY CERTIFY THAT THE CORNER LOCATION ON THIS RECORD WAS DETERMINED BY ME OR UNDER MY DIRECTION AND CONTROL AND THAT THIS U.S. PUBLIC LAND SURVEY MONUMENT RECORD IS CORRECT AND COMPLETE TO THE BEST OF MY KNOWLEDGE AND BELIEF.

James D. Rein
 SIGNATURE

12/06/22
 DATE



INDEX NO. Z-1
 3807360000