

# U.S. PUBLIC LAND SURVEY MONUMENT RECORD

**Note:** This form is intended and designed to fulfill all requirements of Wisconsin Administrative Code, Chapter A-E 7.08 U.S. Public Land Survey Monument Record (3) (a) (b) (c) (d) (e) (f) (g) (h) (i). An additional sheet may be added if necessary to conform with said requirements.

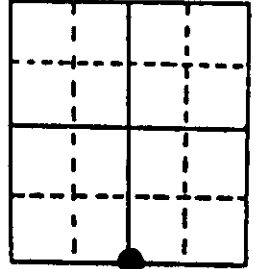
(a) Corner location: Township 38 North Corner: South 1/4 Corner

Section 36 Range 7 East Original Surveyor: Alfred Millard

Town/City/Village Lake Tomahawk

Original B.T.'s: 10" Pw N27°E 23 lks  
16" A S14°E 20 lks

County Oneida

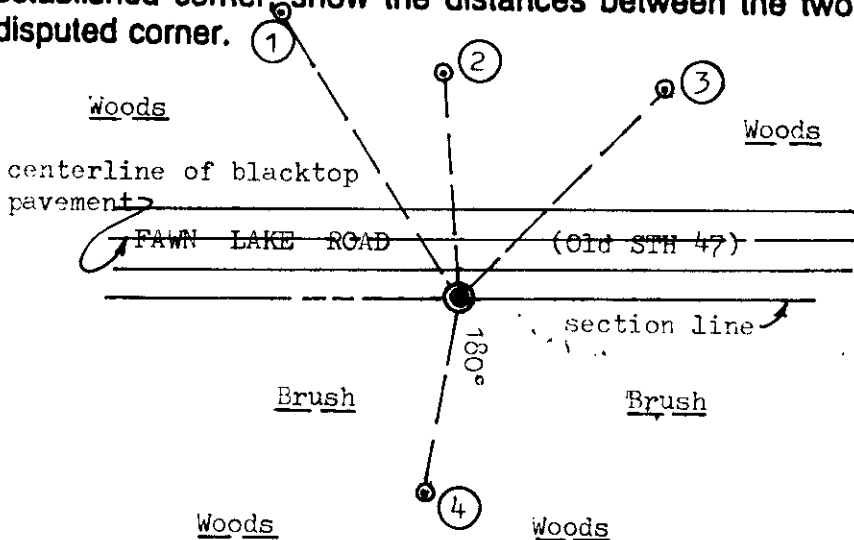


Original Survey Date: September 1860 ● Location

(b) (f) (g) (h) Description of monument found at this corner and if it was accepted, state all evidence (material, testimonial, occupational, plats, records, other monuments) used as a basis for accepting. If not accepted or if nothing was found, state evidence used as basis for establishing location. If reestablished through lost corner proportionate methods, indicate all monuments, distances and directions used to establish. Indicate type of monument found or set and sign post.

No prior record survey corner evidence found by careful examination at this corner location; nor any reliable possession boundary evidence. In 1890, Dorr noted this corner at 39.98 ch from SW section corner and 39.34 ch from SE section corner but no BTs noted; Door ran North from this corner to set CS1/16 and C1/4 corners for Section 36. In 1936, Maine measured 80.26 ch from SE to SW section corners of Section 36 but noted no 1/4 corner monument or BTs. In 1959, Goddard/Ripco notes this corner in centerline of Highway 47 (now vacated and re-routed) but notes no monument or references; he does note the corner as being 40.08 ch East of the SW section corner and 40.09 ch West of the SE section corner of Section 36 on a right line, and also ran north for a subdivision survey of Section 36 per Oneida County records, which hence has proven to be of some unreliability. Therefore, lacking any positive evidence to restore this corner location, I reestablished the corner midway on a right line between existing SW and SE section corner monuments by Topcon total station traverse in cooperation with Norbert Vissers/DNR Surveyor and his assistant William Anderson, and set a standard 2" dia. x 30" long Berntsen aluminum monument with stamped Oneida County cap 2" below existing grade; I placed several rocks around the top of monument below grade, and set a standard white poly 'T' corner marker post 4' South of the corner monument. Recovery completed August 5, 1997. Corner is 2650.88' each way on a right line between section corner monuments.

(c) (d) (e) Plan view of corner with ties to at least 4 witness monuments. If in disagreement with previously established corner, show the distances between the two corners and also indicate the ties to the disputed corner.

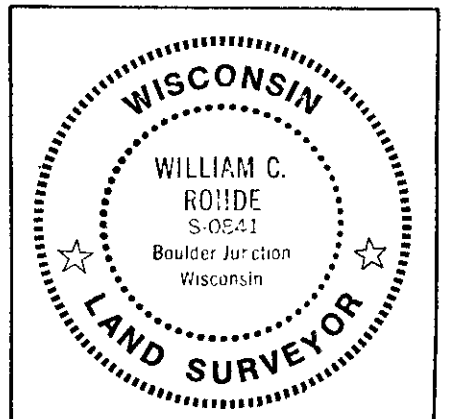


**Witness Monument Ties:**

- ① New BT 14" Or/East trunk of a triple, N33°W 38.49'.
- ② New BT 14" Or N05°W 58.25'.
- ③ New BT 16" Or N44°E 75.96'.
- ④ New BT 10" Aspen S10°W 51.92'.

**Note:** Corner falls 8 feet South of South edge of existing road pavement at edge of roadway shoulder & shallow bank to South in rocky backfill.

Scale: 1" = 50'



Index No. Z-23

Unless otherwise indicated, all BT witness monument ties are to a 1/4" dia. by 2.5" long PK nail with 1.25" dia. steel washer set in unblazed right face bark; and a PK nail with 2" dia. steel washer stamped BT also set in unblazed front face bark of each BT at DBH. All previous corner recovery notes from Wisconsin DNR and/or Oneida County survey records.

(i) I, William C. Rohde, RLS 841  
(type or print name) certify that the corner location on this record was determined by me or under my direction and control and that this U.S. Public Land Survey Monument Record is correct and complete to the best of my knowledge and belief.

William C. Rohde  
Signature

August 23, 1997  
Date

3807360020