

CERTIFIED LAND CORNER RESTORATION

Index No. **Y-25**

3807361000

State of Wisconsin

County of Oneida } ss.

I Phillip T. Hansen, do hereby certify that on the 13th day of January, 19 77, I found evidence of the S 1/16 corner of Section 36 - 31.

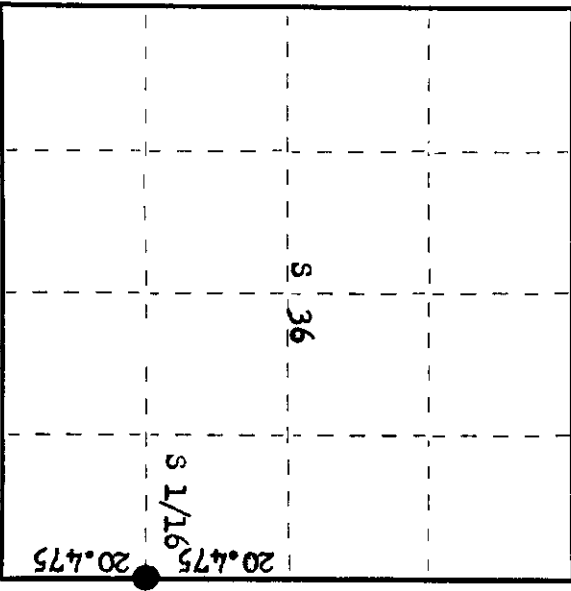
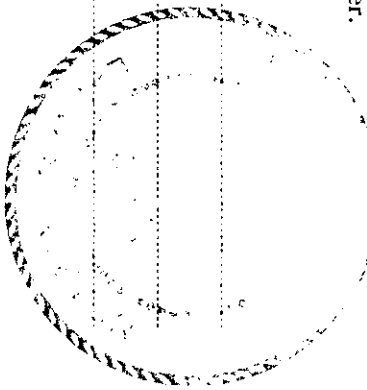
Township 38, North, Range 8 & 7 East, Fourth Principal Meridian,

as described hereon; and that from this evidence I established a new monument and accessories as described hereon to perpetuate the original location of this corner.

Resident witnesses:

Jim Claitor

Herb Wagoner



History of original corner establishment:

Corner established by Goddard and crew, Ripco Surveyors, in 1959. Ran a random line North, bearing 357° 28' mag. from SE corner Section 36, 80.31 chains, closed out 4 links east of NE Section Corner. Corrected bearing N 20° 31' W. Set S 1/16 corner at 20.475 chains and 1 link west. Marked Tamarack 5" S 75° E 29 links, Tamarack 6" S 6° W 1.18 chains.

Description of corner evidence found:

Recovered 1" iron pipe with 2" square brass cap, stamped:  
An old 5" squared post bears N 2° E 20.7 links from iron pipe.  
Monument in good condition and firmly in ground.  
Recovered OBF - Tamarack 5" (7") S 75° E 29.0 links, scribbling not legible.  
Tamarack 6" (8") S 6° W 118.0 links, scribbling not legible.

**S36 | S31**  
**S | 1/16**  
**RIPCO**

Description of monument and accessories I established to perpetuate the original location of this corner.  
As monument was found in good condition, it was left as found.  
Added additional scribbling to brass cap:  
Monument projects 20" above ground.

**T38N**  
**R 336 | S31**  
**7 | S | 1/16**  
**E RIPCO**  
**R 8**

Dated at Rhineland, Wis., this 18th day of January, 19 77

Signature Phillip T. Hansen Title Registered Land Surveyor Registration No. S-498  
(County Surveyor, Registered Land Surveyor, or other duly authorized official)

Office of Register of Deeds, County of Oneida  
Instrument was filed in this office for record on the 24th day of February, 19 77  
at 100 o'clock P. M.

Doris Verage Kuehn  
(Register of Deeds)

By Doris Verage Kuehn Deputy

O = Corner monument restored.