

CERTIFIED LAND CORNER RESTORATION

Index No. **X-22**

State of Wisconsin

County of Oneida } ss.

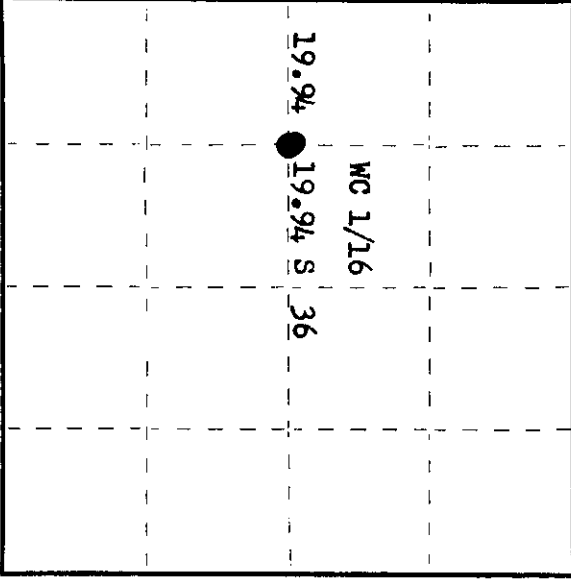
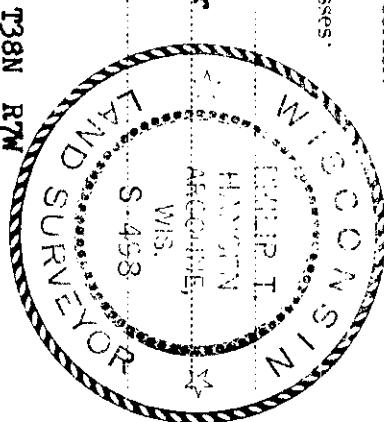
History of original corner establishment:  
Corner established by N. Loftus, Ripco Surveyor, ran random line east from W 1/4 corner 39.88 chains to C 1/4 corner set by B.F. Dorr. Set WC 1/16 at 19.94 chains intermediate. Marked NBTs - Black Spruce 4" S18°W, 10 links and Black Spruce 6" N01°W 12 1/2 links.

I, Phillip T. Hansen, do hereby certify that on the 25th day of February, 19 77, I found evidence of the WC 1/16 corner of Section 36 Township 38, North, Range 7 East, Fourth Principal Meridian, as described hereon; and that from this evidence I established a new monument and accessories as described hereon to perpetuate the original location of this corner.

Resident witnesses:

Jim Claflin

Herb Wagoner



○ = Corner monument restored.

3807362030

Description of corner evidence found:

Recovered 1" iron pipe with 2" square brass cap in good condition and firmly in ground. Cap stamped:

Recovered OBTs - Black Spruce 4" S18°W, 10.0 links (12.9 lks.),

scribed CW 1/16 BT.

Black Spruce 6" N1°W 12.5 links (10.0 lks.),

scribed CW 1/16 BT.

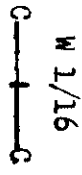
It appears they had distances to BTs reversed.

Description of monument and accessories I established to perpetuate the original location of this corner.

As monument was recovered in good condition, it was left in place.

Monument projects 12" above ground.

Added stamping T38N R7E to brass cap.



RIPCO

Dated at Rhineland, Wis., this 28th day of March, 19 77.

Signature Phillip T. Hansen Title Registered Land Surveyor Registration No. S-498  
(County Surveyor, Registered Land Surveyor, or other duly authorized official)

Office of Register of Deeds, County of Oneida, I hereby certify that the within instrument was filed in this office for record on the 12th day of April, 19 77 at 2 o'clock P. M.

Arnie George Kuehn  
(Register of Deeds)

By: \_\_\_\_\_ Deputy