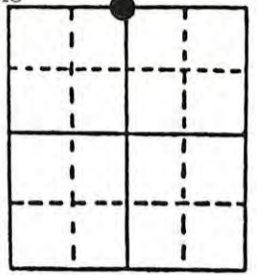


# U.S. PUBLIC LAND SURVEY MONUMENT RECORD

**Note:** This form is intended and designed to fulfill all requirements of Wisconsin Administrative Code, Chapter A-E 7.08 U.S. Public Land Survey Monument Record (3) (a) (b) (c) (d) (e) (f) (g) (h) (i). An additional sheet may be added if necessary to conform with said requirements.

(a) Corner location: Township 38 North Corner: North Section Line  
 Section 10 Range 8 East Original Surveyor: A. Anderson  
 Town/City/Village Newbold Original B.T.'s: 5" T N76½°W 50 lks  
 County Oneida 5" Bw S75°W 48 lks

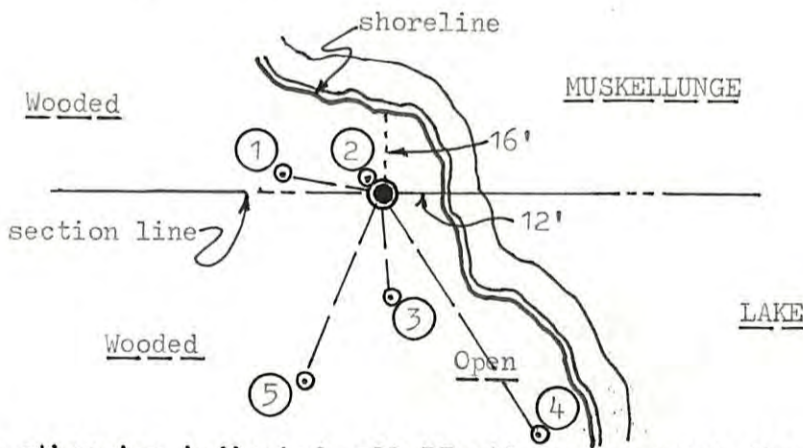


Original Survey Date: July 1863 ● Location

(b) (f) (g) (h) Description of monument found at this corner and if it was accepted, state all evidence (material, testimonial, occupational, plats, records, other monuments) used as a basis for accepting. If not accepted or if nothing was found, state evidence used as basis for establishing location. If reestablished through lost corner proportionate methods, indicate all monuments, distances and directions used to establish. Indicate type of monument found or set and sign post.

I found and accepted a 1" dia. iron pipe monument with uncapped top flush with existing grade at this corner location, and drove a standard 2" dia. by 30" long aluminum monument with stamped Oneida County cap over it to 16" above grade at refusal due to subgrade rocks and rooting. Also found a very old 4" squared wood marker post with pointed top and face "MC" scribing 14" NW of the corner monument, and I set a standard white poly 'T' corner marker post along the SW corner of the old wood marker post to further support it. The corner location was shown to me by owner of adjoining parcel to South of the monument. The corner is on the North line of Lot 1 of a previous subdivision survey of lots along the westerly shore of Muskellunge Lake by Northwoods Surveyors in 1967, per their filed Plat of Survey in Foltz & Associate records, at Minocqua, Wis. The corner falls within a partially cleared woodlot area of said Lot 1. Their noted BTs, a 12" Maple S88°E 1.4', is now a badly rotted 15", but with face blazes open and plain, and their 11" Pw BT S17°E 5.6' is now in good shape with lower face blaze shut but with overgrowth fissure plain. Lot 1 is signed as Fire No. 6220 on Muskellunge Lake Road leading South and West. No original GLO survey corner evidence is evidenced by this recovery or by previous records. This recovery completed November 7, 1997; there was one resident witness/owner of Lot 2.

(c) (d) (e) Plan view of corner with ties to at least 4 witness monuments. If in disagreement with previously established corner, show the distances between the two corners and also indicate the ties to the disputed corner.



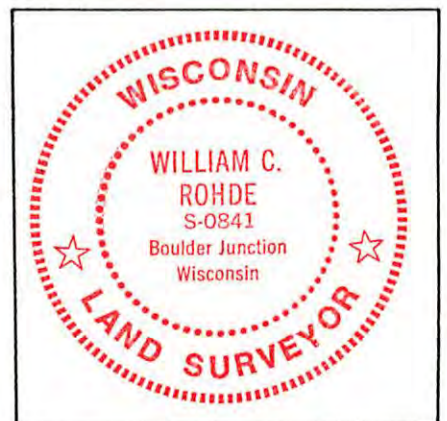
**Witness Monument Ties:**

- ① New BT 11" Tam N78°W 21.54'.
- ② New BT 5" Pb N35°W 4.48'; set PK/washer in left face as BT tipped 15°+ East.
- ③ New BT 10" Pb S04°E 21.10'.
- ④ New BT 10" Pw S32°E 60.56'.
- ⑤ New BT 8" Pb S23°W 42.00'.

Unless otherwise indicated, all BT witness monument ties are to a 1/4" dia. by 2.5" long PK nail with 1.25" dia. steel washer set in unblazed right face bark; and a PK nail with 2" dia. steel washer stamped BT also set in unblazed front face bark of each BT at DBH. All previous corner recovery notes from Wisconsin DNR and/or Oneida County survey records.



Scale: 1" = 40'



(i) I, William C. Rohde, RLS 841  
 (type or print name) certify that the corner location on this record was determined by me or under my direction and control and that this U.S. Public Land Survey Monument Record is correct and complete to the best of my knowledge and belief.

William C. Rohde  
 Signature

Nov. 09, 1997  
 Date

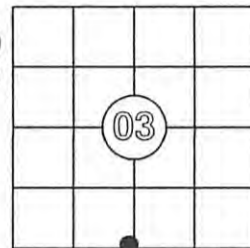
## US PUBLIC LAND SURVEY MONUMENT RECORD

Per Wis. Admin. Code § A-E 7.08, a U.S. public land survey monument record shall be prepared and filed with the county survey records as part of any land survey within 60 days of setting or accepting the corner, which includes or requires the perpetuation, restoration, or use of a U.S. public land survey corner and when any of the situations in Wis. Admin. Code § A-E 7.08(1)(a), (b) or (c) arise.

**3(a) Corner Identification:**

Found Oneida Co.  
aluminum monument  
Meander Corner, south line,  
west shore of Muskellunge Lake  
Section 03  
Township 38 North  
Range 08 East  
4th Principal Meridian  
Town of Newbold  
Oneida Co., WI

Observed Coordinates:	Published County Coordinates:
N: 225332.04	N: 225331.70 (difference: 0.34')
E: 246744.80	E: 246745.46 (difference: 0.66')
Datum: WISCRS	Datum: NAD 1983 (91)
GNSS Control: WISCRS NETWORK	
GNSS Method: RTK-Direct	
Verification Method: 1, 2	



**CORNER ID:**  
3808030021

**History of Original Corner**

Corner Set: Wood Post  
Original Surveyor: Alexander Anderson  
Date of Survey: June, 1863  
Tamarack, 5" N 76 1/2° W, 50 links  
Birch, 5" S 75° W, 48 links

The coordinate value has been verified by at least one of the following methods:  
1) comparison to a previously GNSS determined published value;  
2) The value is the average of two or more GNSS observations at markedly different times;  
3) one or more distances were measured to the corner from temporary GNSS observed offset locations.

**3(b)((c)(d)(f)(g)(h))**

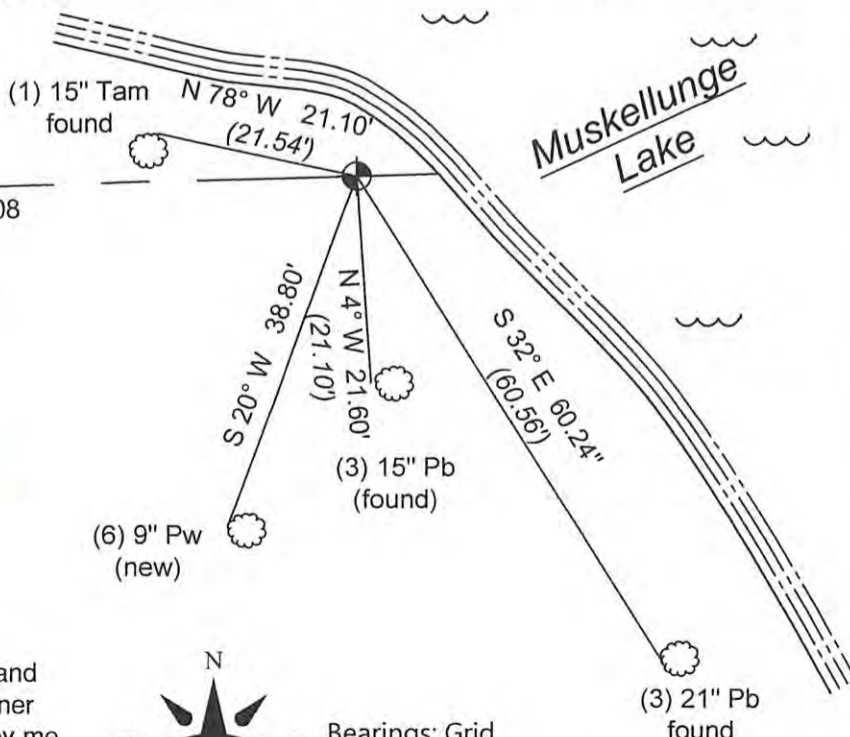
This is a continuation of a previous USPLSS Monument Record by Surveyor William Rohde (1997). See previous record for additional history on this corner.

- December 21, 1997 - William Rohde, S-841, finds a 1" iron pipe and drives an aluminum monument over it. See Rohde's tie sheet of 1997.
- June 21, 2013 - Jeff Austin finds a 2 1/2" aluminum Oneida County monument. (Oneida Co. Map No. B7639)
- November 30, 2024 - I recovered the aluminum monument. It is plumb and does not appear to be disturbed and is currently frozen in place. However, the location in which it is set is inundated with water during the summer. I accepted the location of the monument and made two RTK observations. My two observations were taken on two different days, with more than 4 hours between observation times. They were 0.02' apart. My averaged observation location is N 62°54'04" W, 0.74' from the published location. I re-measured the existing ties. I made one new BT as shown below.

**Notes on Rohde's BTs:**

- Upper and lower nails are now overgrown with bark. Set an 8d above the scar of the lower PK nail.
- This BT is gone.
- Found upper and lower PK nails still visible.
- Found upper nail visible and lower nail is overgrown with bark. Set an 8d above the scar of lower PK nail.
- This BT has tipped over and is no longer viable.
- Set 8d nail in 9" Pw, S 20°E, 38.80'.

NORTH LINE - SECTION 10-38-08



**3(i)**

I, Anthony R. Jones, Wisconsin Professional Land Surveyor No S-2508, hereby certify that the corner location shown on this record was determined by me, or under my direction or control, and that this U.S. Public Land Survey Monument Record is correct and complete to the best of my knowledge and belief.

