

U. S. PUBLIC LAND SURVEY MONUMENT RECORD

INSTRUCTIONS:

This record shall show the location of the corner and shall include all of the following nine elements (a through i).

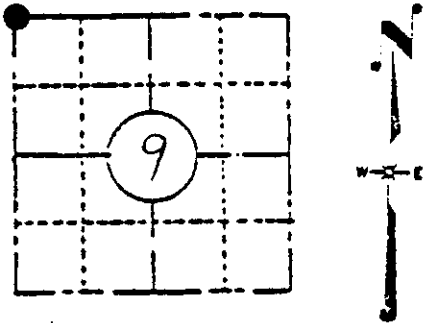
- (a) Identify the corner by reference to the U.S. public land survey system.

T 38 N, R 8 E

Oneida Co.

NW cor. Sec. 9

2" iron pipe with
D.N.R. brass cap



LOCATION SKETCH
(Location of landmark indicated by "9")

NOTE:
This location could be subject to a re-evaluation when more field work and computations are made later in this or adjacent sections, as there are still problems with other pipes and distances as found in place.
MS

- (b) Describe any record evidence, monument evidence, occupational evidence, testimonial evidence or any other material evidence you considered, and whether the monument was found or placed.

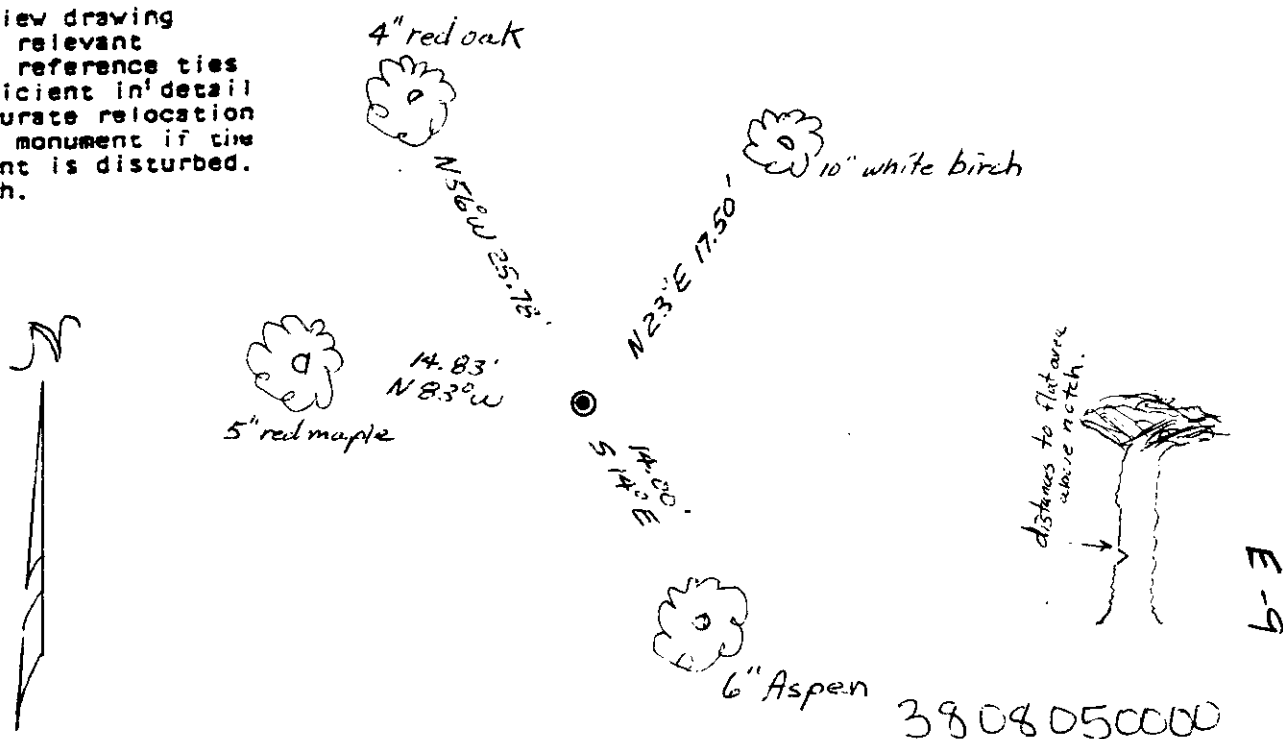
Found a low 3/4" ip. This was found in an area that fit the description by a land owner approx. 20-30 years ago. That land owner had seen a monument there.

Orig. Survey by Alexander Anderson
June 1863

OBT^s Bx 10" N47 1/2 E 19 1/2
" 10" N25 E 32 1/2

- (c) In the plan view drawing below, provide reference ties to at least 4 witness monuments, or, if the location is within a municipality, to at least 2 witness monuments. (Witness monuments shall be made of concrete, natural stone, iron or other equally durable material, except wood.) Describe witness monuments.

- (d) Show a plan view drawing depicting the relevant monuments and reference ties which is sufficient in detail to enable accurate relocation of the corner monument if the corner monument is disturbed. Indicate north.



(e) Describe any material discrepancy between the location of the corner as restored or reestablished and the location of that corner as previously restored or reestablished by distance and direction. Show the discrepancy on the plan view drawing under (d), above. Show the distances between the corner as previously restored or reestablished and (1) the corner as restored or reestablished, and (2) to at least 2 of the witness monuments shown on the drawing in (d), above.

None

(f) Was the corner restored through acceptance of (1) an obliterated evidence location, or, (2) a found perpetuated location?

Found in place

(g&h) Was the corner reestablished through lost corner proportionate methods? If so, show the method, including the directions and distances to other public land survey corners used as evidence or used for proportioning in determining the corner location?

No

REGISTER OF DEEDS OFFICE
ONEIDA COUNTY, WIS.
FILED
JUL 11 1986
At *8:00* O'clock *A* M
DORIS VERAGE KUEHN
REGISTER OF DEEDS

(i) I, *Marvin E. Seymour*
(type or print name) certify that the corner location shown on this record was determined by me or under my direction and control and that this U.S. Public Land Survey Monument Record is correct and complete to the best of my knowledge and belief.

Marvin E. Seymour
Signature

9-6-83
Date

