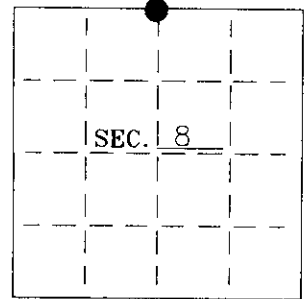


**U. S. PUBLIC LAND SURVEY MONUMENT RECORD**

Note: This form is intended and designed to fulfill all requirements of Wisconsin Administrative Code—Chapter A-E 7.08 U. S. Public Land Survey Monument Record (3)(a)(b)(c)(d)(e)(f)(g)(h)(i). An additional sheet may be added if necessary to conform with said requirements.

(a) CORNER LOCATION: State Plane Coordinates  
N1/4 corner of Sec. 8 X ---  
 Township 38 North Y ---  
 Range 8 East Datum Base ---  
 Town Newbold County of Oneida



(b) HISTORY OF ORIGINAL CORNER ESTABLISHMENT:  
 Original Surveyor: Alex Anderson  
 Date of Survey: Commenced 1863  
 Completed 1863

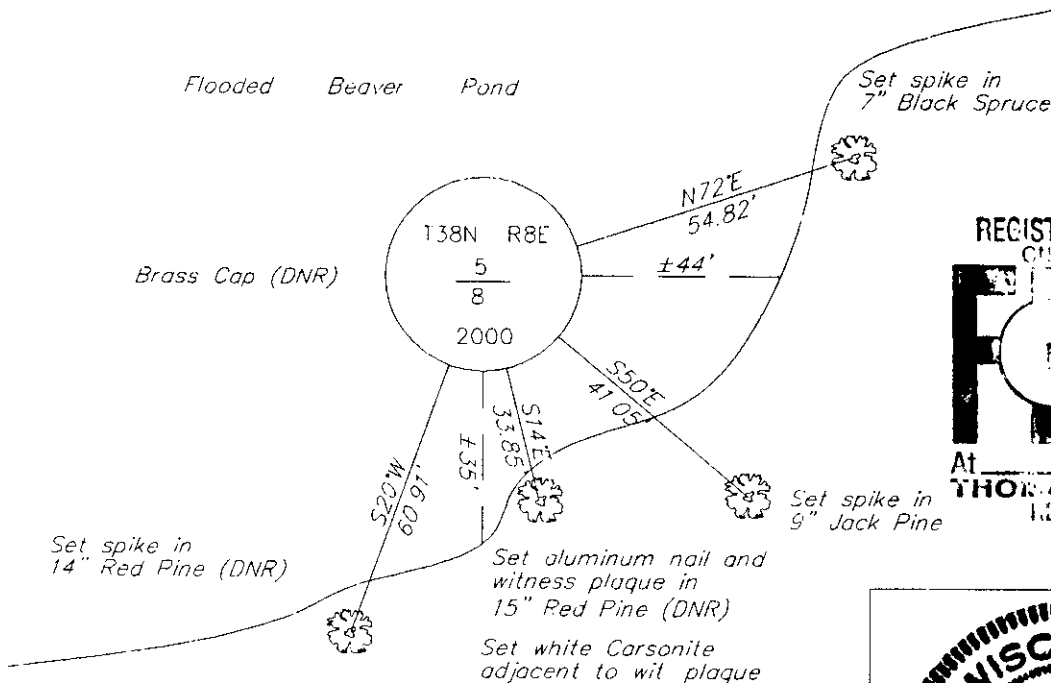
Original B.T.'S  
 7" Tamarack, S15°W, 22lks  
 5" Tamarack, N60.5°E, 40lks

(b)(f)(g)(h) Description of monument found at this corner and if it was accepted—state all evidence (material—testimonial—occupation—plats—records—other monuments) used as a basis for accepting. If not accepted or if nothing was found state evidence used as basis for establishing location. If reestablished through lost corner proportionate methods indicate all monuments—distances and directions used to establish. Indicate type of monument and sign post found or set.

1985— William Rohde (DNR) did a survey of Section 8, and found an erroneous N1/4 Corner. See Oneida County Surveyor's Map #A--00883. He set a Brass-Capped iron pipe by single proportionate measure for the corner. BT's: 6" Tamarack, N20°W, 60.60'; 5" Black Spruce, N85°E, 17.35'; 18" Red Pine, S15°E, 33.35'; 16" Red Pine, S19°W, 60.45'.

2000— I found and accepted a 2" Brass-Capped iron pipe ±2" above water level in flooded beaver pond. I made two new BT's. See sketch below.

(c)(d)(e) Plan view of corner with ties to at least 4 witness monuments. If in disagreement with previously established corner—show the distances between the two corners and also indicate the ties to the disputed.



REGISTER OF DEEDS OFFICE  
 ONEIDA COUNTY, WIS.  
**FILED**  
 MAY 7 2001  
 At \_\_\_\_\_ O'Clock \_\_\_\_\_ M  
 THOMAS H. LEIGHTON  
 REGISTER OF DEEDS

WISCONSIN  
 CHARLES E. WINKLER  
 S-1431  
 MINOCQUA,  
 WIS.  
 LAND SURVEYOR

INDEX NO. E-7

(i) I Charles E. Winkler S-1431  
 hereby certify that the corner location on this record was determined by me or under my direction and control and that this U.S. Public Land Survey Monument Record is correct and complete to the best of my knowledge and belief.

Charles E. Winkler 5/2/2001  
 Signature Foltz and Associates, Inc. Date

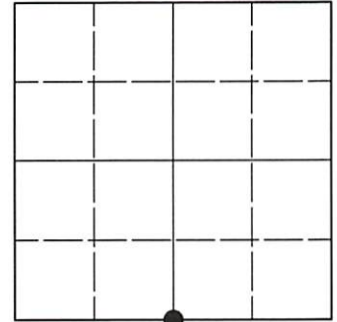
3808050020

# U.S. PUBLIC LAND SURVEY MONUMENT RECORD

Note: This form is intended and designed to fulfill all requirements of Wisconsin Administrative Code, Chapter A-E 7.08 U.S. Public Land Survey Monument Record (3)(a-i).

(a) CORNER LOCATION  
 1/4 Cor. of Secs. 5 & 8  
 Township 38 North  
 Range 8 East of the 4th P.M.  
 Town of Newbold  
 County of Oneida

WISCORS - Oneida County  
 N: 224,953.72 USft  
 E: 236,534.23 USft  
 Datum: NAD 83(2011) ep. 2010.00  
 GNSS Method: RTN - Direct  
 GNSS Control: WISCORS VRS



Sec. 5, T. 38 N., R. 8 E.

(b)(f)(g)(h) Description of monument found at this corner and if it was accepted, state all evidence (material, testimonial, occupational, plats, records, other monuments) used as a basis for accepting. If not accepted or if nothing was found, state evidence used as basis for establishing location. If re-established through lost corner proportionate methods, indicate all monuments, distances and directions used to establish. Indicate type of monument and sign post found or set.

*This record is a perpetuation of the following land corner document(s):*

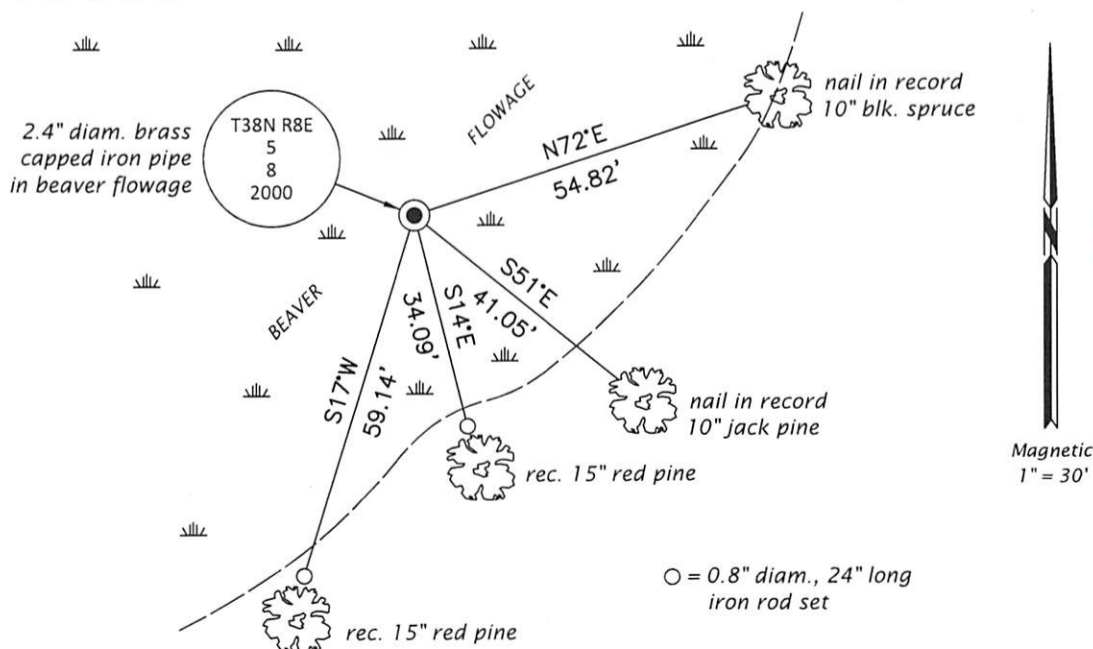
*May 2, 2001: USPLS Monument Record by Charles E. Winkler, filed in Oneida County*

*A complete history of the corner can be found on the previous land corner document(s). I accept the record activity as a true and faithful perpetuation or reestablishment of the original corner location and further perpetuate it as described below.*

*June 7, 2022: I found and accepted the record monument, a 2.4" diam. iron pipe, loosely set in thigh-deep beaver flowage, with a 3.0" diam. brass cap 12" under the water surface. I found or established accessories as indicated below. I found a white vinyl sign post adjacent to the monument.*

*The coordinate value shown is the weighted mean of two or more GNSS observations at markedly different times satisfying the accuracy requirements defined and qualified in the 2022 Oneida County Fee Schedule for USPLS Corners.*

(c)(d)(e) Plan view of corner with ties to at least 4 witness monuments. If in disagreement with previously established corner, show the distances between the two corners and also indicate the ties to the disputed.




REGISTER OF DEEDS OFFICE  
 ONEIDA COUNTY  
 FILED

AUG 02 2022

KYLE J. FRANSON  
 REGISTER OF DEEDS

(i) I, Jeffrey W. Austin, Professional Land Surveyor No. S-1885, hereby certify that the corner location on this record was determined by me or under my direction and control and that this U.S. Public Land Survey Monument Record is correct and complete to the best of my knowledge and belief.

  
 Signature JULY 2, 2022  
Date