



Stock No. 26273

US PUBLIC LAND SURVEY MONUMENT RECORD

Index No. U 2-3

State of Wisconsin }
County of Oneida } ss.

I John F. Fisher, do hereby certify that on the 30 day of October, 1984, I found evidence of the meander corner of Section 7 and 18 Township 38 North, Range 8 East, Fourth Principal Meridian, as described hereon; and that from this evidence I established a new monument and accessories as described hereon to perpetuate the original location of this corner.

Resident witnesses:

History of original corner establishment:

The original Government Survey was performed by Alexander Anderson, Deputy Surveyor in July 1863. Set wood post:

Yellow Pine 8" 841°W 7 lks
White Pine 8" N67°E 9 lks

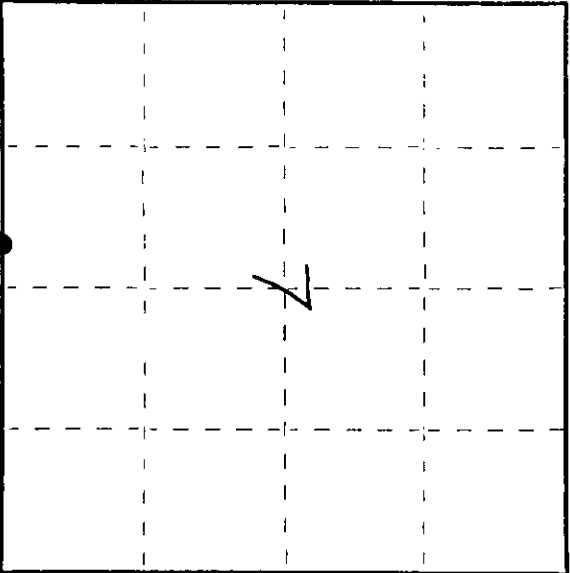
Description of corner evidence found:

Norway Pine Stump 12" S60°E 9.57 feet
Jack Pine 24" S70°W 20.08 feet
Norway Pine 20" S85°W 5.04 feet
Norway Pine 20" S 5°E 13.40 feet

Description of monument and accessories I established to perpetuate the original location of this corner.

Set Oneida County 2" aluminum pipe with aluminum tablet:
Set nail in:

Maple 5" S30°E 25.12 feet



● = Corner monument restored.

Dated at Minocqua, Wis., this 17th day of May, 1985.

Signature: Arthur H. Feltz Title: Registered Land Surveyor Registration No. 5-836
(County Surveyor, Registered Land Surveyor, or other duly authorized official)

Office of Register of Deeds, County of Oneida. I hereby certify that the within instrument was filed in this office for record on the 9th day of June, 1986, at 9:00 o'clock P. M.

David Doran Register of Deeds

By: Supriana A. Oates Deputy

3808070023

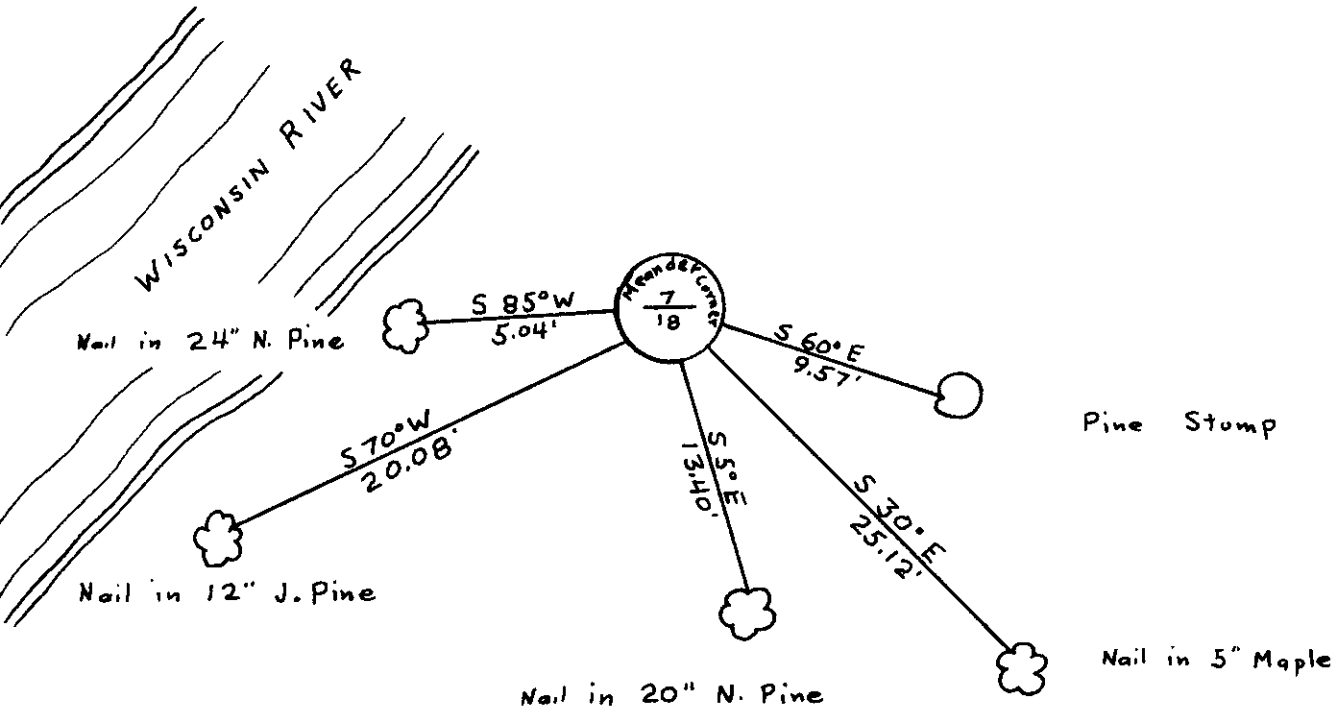
(e) Describe any material discrepancy between the location of the corner as restored or reestablished and the location of that corner as previously restored or reestablished by distance and direction. Show the discrepancy on the plan view drawing under (d), above. Show the distances between the corner as previously restored or reestablished and (1) the corner as restored or reestablished, and (2) to at least 2 of the witness monuments shown on the drawing in (d), above.

See drawing below

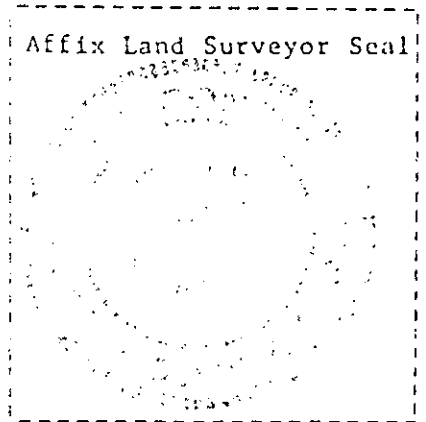
(f) Was the corner restored through acceptance of (1) an obliterated evidence location, or, (2) a found perpetuated location?

Found perpetuated location

(g&h) Was the corner reestablished through lost corner proportionate methods? If so, show the method, including the directions and distances to other public land survey corners used as evidence or used for proportioning in determining the corner location?



Affix Land Surveyor Seal



(1) I, John E. Fisher
 (type or print name) certify that the corner location shown on this record was determined by me or under my direction and control and that this U.S. Public Land Survey Monument Record is correct and complete to the best of my knowledge and belief.

John E. Fisher
 Signature

5/9/85
 Date