

# U.S. PUBLIC LAND SURVEY MONUMENT RECORD

**Note:** This form is intended and designed to fulfill all requirements of Wisconsin Administrative Code, Chapter A-E 7.08 U.S. Public Land Survey Monument Record (3) (a) (b) (c) (d) (e) (f) (g) (h) (i). An additional sheet may be added if necessary to conform with said requirements.

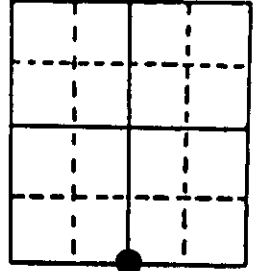
(a) Corner location: Township 38 North Corner: South 1/4 Corner

Section 8 Range 8 East Original Surveyor: A. Anderson

Town/City/Village Newhold

Original B.T.'s: 10' A S55°W 10 lks  
10' A N15°E 09 lks

County Oneida



Original Survey Date: July 1863 ● Location

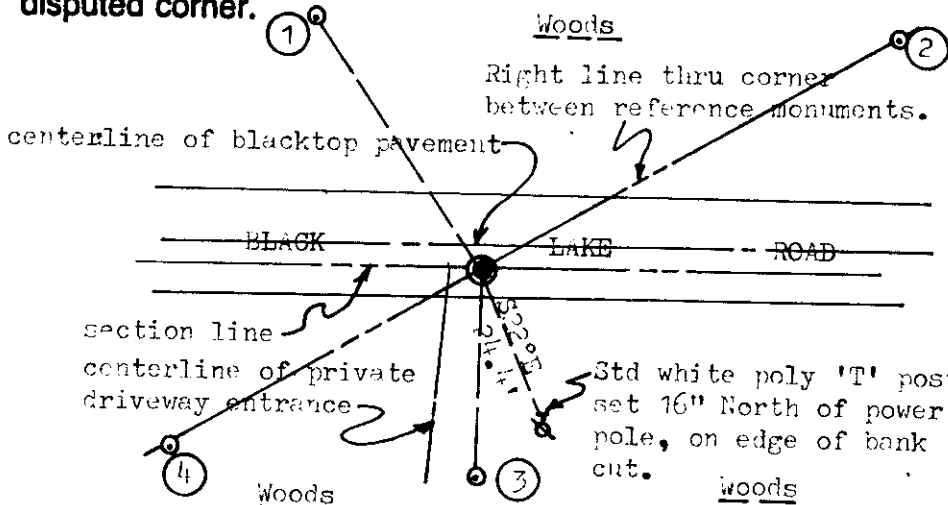
(b) (f) (g) (h) Description of monument found at this corner and if it was accepted, state all evidence (material, testimonial, occupational, plats, records, other monuments) used as a basis for accepting. If not accepted or if nothing was found, state evidence used as basis for establishing location. If reestablished through lost corner proportionate methods, indicate all monuments, distances and directions used to establish. Indicate type of monument found or set and sign post.

Found and accepted a RR spike flush in existing blacktop roadway pavement at this corner location. No original GLO survey corner evidence recovered as now obliterated within road right-of-way. In 1985, this RR spike was also found and accepted at the corner for Wis DNR resurvey of Section 8 by Norbert Vissers and myself per plat of survey dated 11-13-85 in survey records at Trout Lake DNR office; BTs noted were 12" Pj S67°W 37.75', 10" Bw N04°W 33.75', 6" Or N55°E 58.45' and a found 1 1/4" dia. iron pipe monument S01°W 32.95', which are now found obliterated excepting the iron pipe monument found and used for new ties below. The corner falls 4.5' North of the south edge of existing blacktop roadway pavement. I did not reset corner with a new monument as roadway construction in progress to the west of corner, so I referenced the corner by reference monuments on a right line with a transit and tape survey.

This recovery completed August 13, 1997; no witnesses.

Corner is located North of NE corner of private parcel at Fire No. 6691 Black Lake Road.

(c) (d) (e) Plan view of corner with ties to at least 4 witness monuments. If in disagreement with previously established corner, show the distances between the two corners and also indicate the ties to the disputed corner.



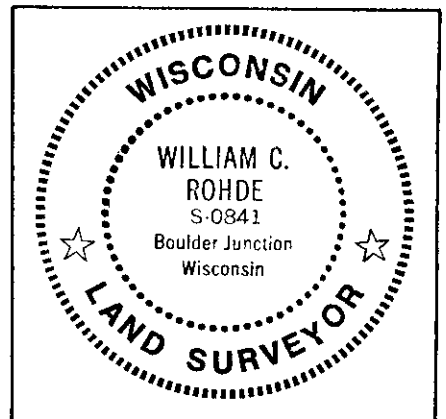
**Witness Monument Ties:**

- ① New BT 13" Pw N34°W 47.05'.
- ② 1" dia. x 33" long iron pipe set with Ref Mk cap N60°E at 74.48'.
- ③ 1 1/4" dia. iron pipe found S01°W 32.90'.
- ④ 1" dia. x 30" long iron pipe set with Ref Mk cap 360°W at 56.25'.

Unless otherwise indicated, all BT witness monument ties are to a 1/4" dia. by 2.5" long PK nail with 1.25" dia. steel washer set in unblazed right face bark; and a PK nail with 2" dia. steel washer stamped BT also set in unblazed front face bark of each BT at DBH. All previous corner recovery notes from Wisconsin DNR and/or Oneida County survey records.



Scale: 1" = 30'



(i) I, William C. Rohde, RLS 841  
(type or print name) certify that the corner location on this record was determined by me or under my direction and control and that this U.S. Public Land Survey Monument Record is correct and complete to the best of my knowledge and belief.

William C. Rohde  
Signature

August 24, 1997  
Date

3809080020

Index No. 5-7

