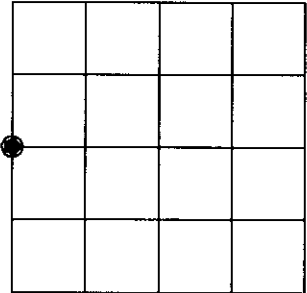


U.S. PUBLIC LAND SURVEY MONUMENT RECORD

Note: This form is intended and designed to fulfill all requirements of Wisconsin Administrative Code, Chapter A-E 7.08 U.S. Public Land Survey Monument Record (3)(a)(b)(c)(d)(e)(f)(g)(h)(i). An additional sheet may be added if necessary to conform with said requirements.

(a) CORNER LOCATION:

West Quarter corner of Sec. 10 State Plane Coordinates
 Township 38 North X _____
 Range 8 East Y _____
 Town/~~City/Village~~ Newbold Datum Base _____
 County of Oneida



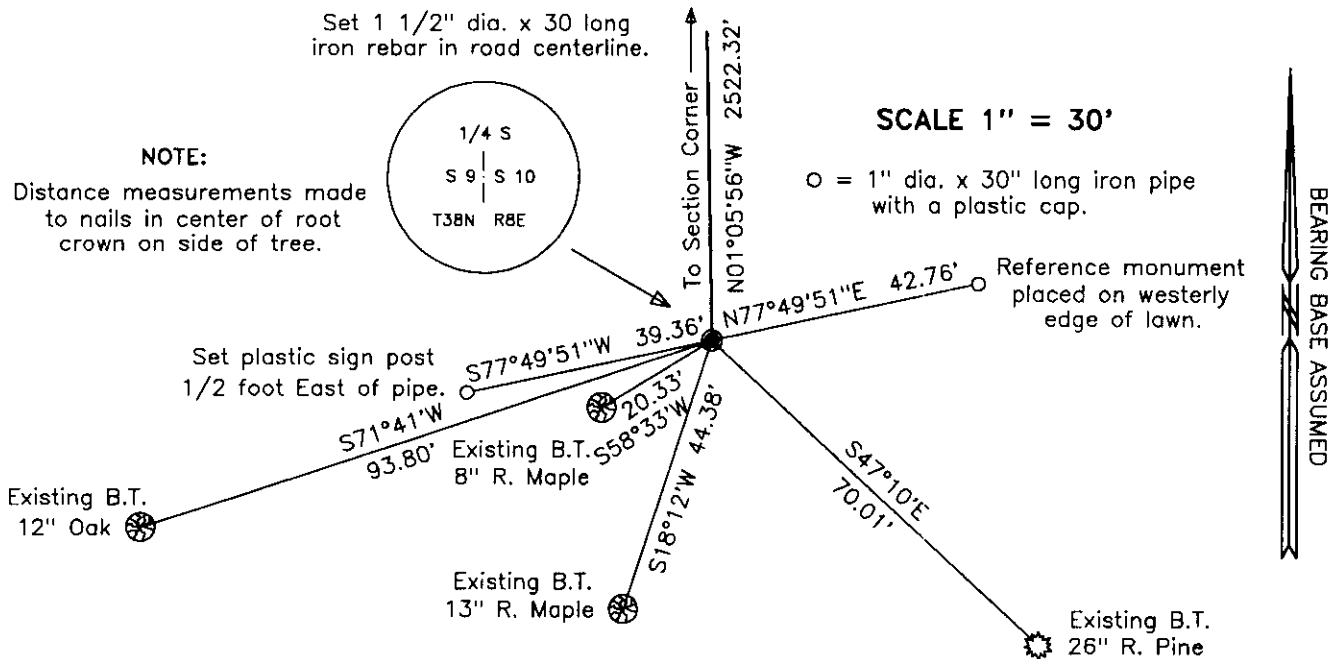
(b) HISTORY OF ORIGINAL CORNER ESTABLISHMENT

Original Surveyor: Alexander Anderson Original B.T.'S SECTION 10
 Date of Survey: Commenced July 10th, 1863 Birch 9" S65°W, 11 lks.
 Completed July 21st, 1863 Red Oak 16" S6°E, 14 lks.

(f)(g)(h) Description of monument found at this corner and if it was accepted, state all evidence (material, testimonial, occupational, plats, records, other monuments) used as a basis for establishing location. If not accepted or if nothing was found, state evidence used as basis for establishing location. If reestablished through lost corner proportionate methods, indicate all monuments, distances and directions used to establish. Indicate type of monument and sign post found or set.

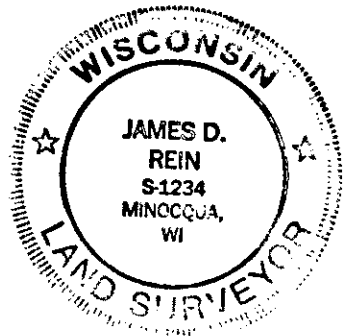
- 1960 - R. E. Bandow re-established corner.
- 1976 - Wisconsin D.N.R. - Oneida County Record L 691 - Set 3' alum. monument 1 foot below road surface. Made new B.T.'s: Maple S. 9" S58°W, 20.35 feet; Pine N. 24" S47°E, 69.5 feet.
- Dec. 10th, 1991 - William E. Bandow, Land Surveyor, recovered aluminum monument and existing B.T.'s: Spike in 8" Maple S56°W, 20.38 feet; Spike in 24" R. Pine S9°E, 69.55 feet. Made new B.T.'s: Spike in 30" W. Pine N43°W, 64.00 feet; Spike in 6" Oak S16°W, 58.75 feet.
- July 18th, 1999 - James D. Rein, Land Surveyor, recovered corroded remains of aluminum monument in centerline of road. Replaced the corroded monument with a 1 1/2 inch diam. x 30 inch long iron rebar. Set plastic capped 1" diam. x 30 inch long iron pipe reference monuments and made new ties to existing bearing trees as shown in plan.

(c)(d)(e) Plan view of corner with ties to at least 4 witness monuments. If in disagreement with previously established corner, show the distance between the two corners and also indicate the ties to the disputed corner.



(i) I, James D. Rein, Registered Land Surveyor No. 1234, hereby certify that the corner location on this record was determined by me or under my direction and control and that this U.S. Public Land Survey Monument Record is correct and complete to the best of my knowledge and belief.

James D. Rein July 19th, 1996
 Signature Date



INDEX NO. G 13
3808092000

3808092000

U.S. PUBLIC LAND SURVEY MONUMENT RECORD ADDENDUM

Note: This form is intended and designed to fulfill all requirements of the Wisconsin Administrative Code, Chapter A-E 7.08 U.S. Public Land Monument Record (3)(a)(b)(c)(d)(e)(f)(g)(h)(i). An additional sheet may be added if necessary to conform with said requirements.

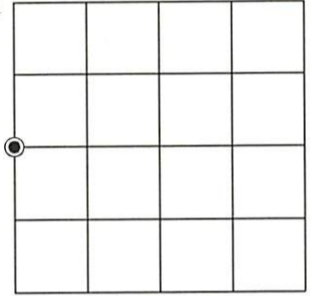
(a) CORNER LOCATION:

West Quarter corner of Section 10
Township 38 North
Range 8 East
Town of Newbold
County of Oneida

North:
East:
Datum:
GNSS Method:
GNSS Control:

(RECORDING AREA)

SECTION 10



(b) HISTORY OF ORIGINAL CORNER ESTABLISHMENT

Original Surveyor:
Date of Survey: Commenced
Completed
Original B.T.'S

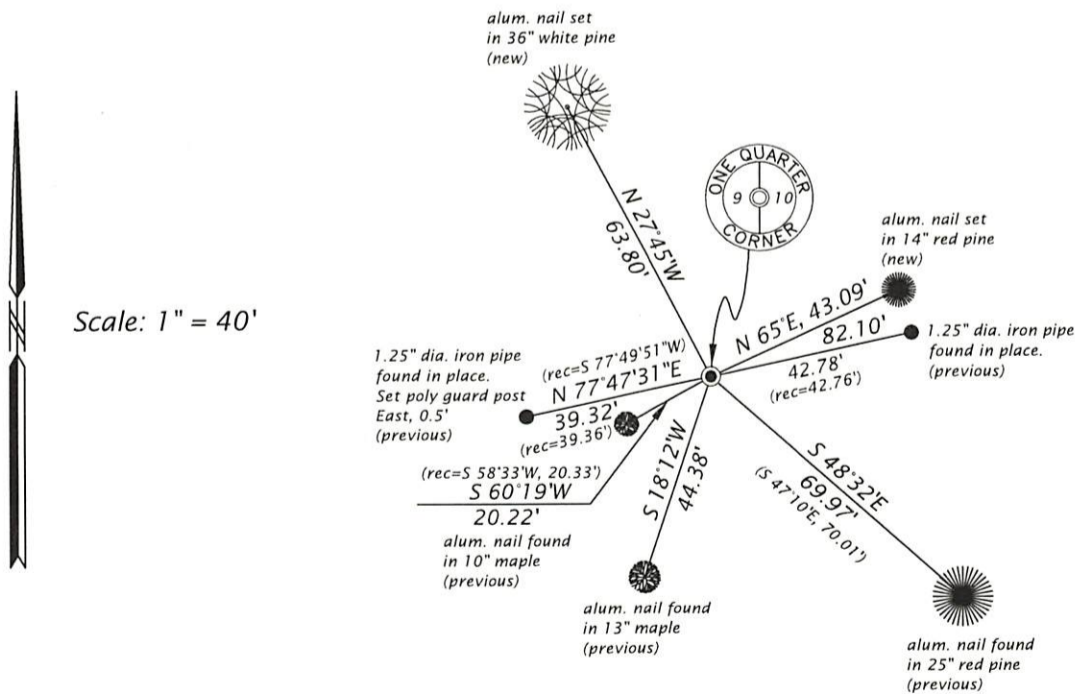
SEE PREVIOUS U.S.P.L.S. MONUMENT
RECORD DATED JULY 19, 1996

(f)(g)(h) DESCRIPTION OF MONUMENT FOUND AT THIS CORNER AND IF IT WAS ACCEPTED, STATE ALL EVIDENCE (MATERIAL, TESTIMONIAL, OCCUPATIONAL, PLATS, RECORD, OTHER MONUMENTS) USED AS A BASIS FOR ESTABLISHING LOCATION. IF NOT ACCEPTED OR IF NOTHING WAS FOUND, STATE EVIDENCE USED AS BASIS FOR ESTABLISHING LOCATION. IF REESTABLISHED THROUGH LOST CORNER PROPORTIONATE METHODS, INDICATE ALL MONUMENTS, DISTANCES AND DIRECTIONS USED TO ESTABLISH. INDICATE TYPE OF MONUMENT AND SIGN POST FOUND OR SET.

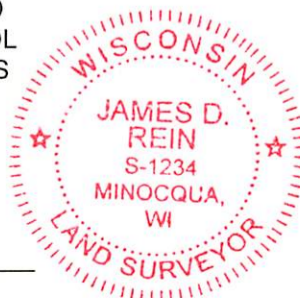
This is a perpetuation of a previous U.S.P.L.S. Monument Record by James D. Rein, RLS-1234, dated July 19, 1996, and filed in the office of the Oneida County Register of Deeds. A complete history of the corner can be found on the previous monument record. I accept the previous location as a true and faithful perpetuation or reestablishment of the original corner location and further perpetuate it as follows.

August 2, 2024, James D. Rein, PLS No. S-1234, in 2010 we set an Oneida County, capped, 2.4" dia. aluminum monument to replace the previous 1.5" dia. iron rod and inadvertently overlooked filing a new corner form. I found and accepted a perpetuation of my monument, the Oneida County, capped, 2.4" dia. aluminum monument set in 2010. We further perpetuate it as shown in the plan. The southwesterly Oak is now gone. See below for 2 additional bearing trees and updated ties to the recovered references.

(c)(d)(e) PLAN VIEW OF CORNER WITH TIES TO AT LEAST 4 WITNESS MONUMENTS. IF IN DISAGREEMENT WITH PREVIOUSLY ESTABLISHED CORNER, SHOW THE DISTANCE BETWEEN THE TWO CORNERS AND ALSO INDICATE THE TIES TO THE DISPUTED CORNER.



(i) I, JAMES D. REIN, PROFESSIONAL LAND SURVEYOR NO. S-1234 HEREBY CERTIFY THAT THE CORNER LOCATION ON THIS RECORD WAS DETERMINED BY ME OR UNDER MY DIRECTION AND CONTROL AND THAT THIS U.S. PUBLIC LAND SURVEY MONUMENT RECORD IS CORRECT AND COMPLETE TO THE BEST OF MY KNOWLEDGE AND BELIEF.



James D. Rein 8/02/24
SIGNATURE DATE

INDEX NO. G-13
3808092000