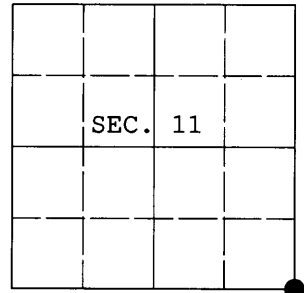


U.S. PUBLIC LAND SURVEY MONUMENT RECORD

Note: This form is intended and designed to fulfill all requirements of Wisconsin Administrative Code, Chapter A-E 7.08 U.S. Public Land Survey Monument Record (3) (a) (b) (c) (d) (e) (f) (g) (h) (i). An additional sheet may be added if necessary to conform with said requirements.

(a) CORNER LOCATION: Plane Coordinates
 Cor. of Secs. 11, 12, 13 & 14 N: 219,971.775 USft
 Township 38 North E: 254,908.901 USft
 Range 8 East Datum: NAD 83/91 (ONEIDA91)
 Town of Newbold County of Oneida



(b) HISTORY OF ORIGINAL CORNER ESTABLISHMENT

Original Surveyor: Alexander Anderson Original Accessories:
 Date of Survey: Commenced July 10, 1863 tamarack 12" N25°W, 29 lks.
 Completed July 21, 1863 aspen 12" N45°E, 19 lks.

(b) (f) (g) (h) Description of monument found at this corner and if it was accepted, state all evidence (material, testimonial, occupational, plats, records, other monuments) used as a basis for accepting. If not accepted or if nothing was found, state evidence used as basis for establishing location. If re-established through lost corner proportionate methods, indicate all monuments, distances and directions used to establish. Indicate type of monument and sign post found or set.

November 19, 1897: Notes by B.F. Dorr on page 179. Dorr found this corner noting that the original aspen was a stub and the tamarack was actually a spruce. He retraced the mile common to Secs. 13 and 14 and was unable to locate the original quarter-section corner. He re-established the quarter-section corner at the midpoint of the mile that he found to be 77.26 chs. in length.

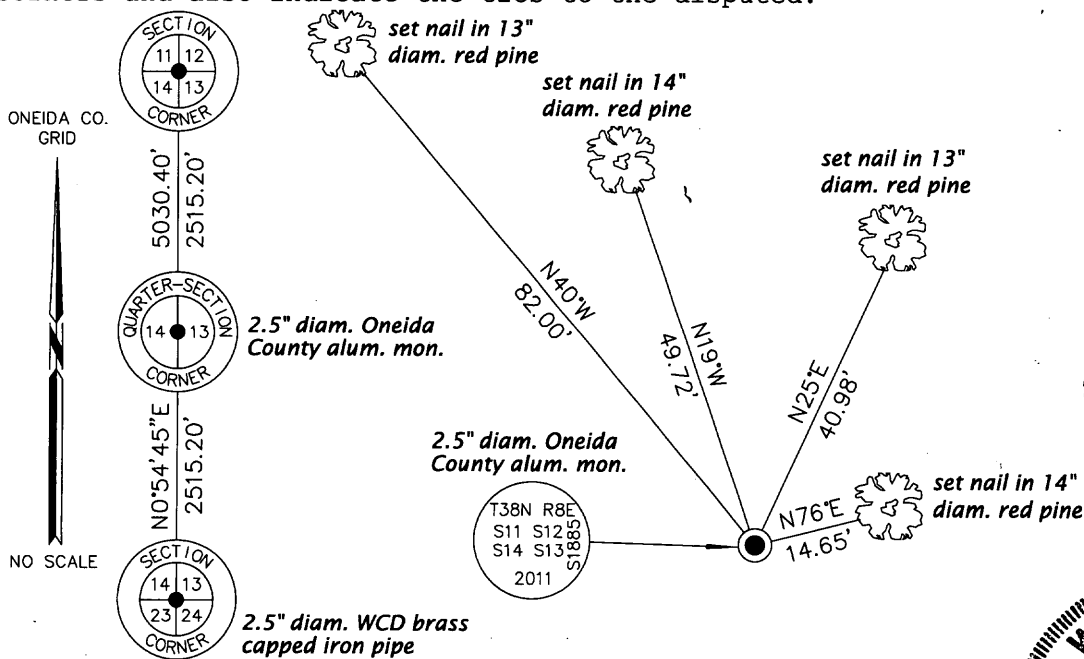
April 24, 2011: During a thorough search, I found no evidence of the original survey or any subsequent survey. I re-established this corner by retracing the bearing and distance between 3808140000 and 3808142000 and projecting this line from 3808142000 as shown below. I believe this is the best remaining evidence of the original corner location. The location is further supported by the comparison of bearing (true) and distance of the line common to Secs. 12 and 13:

GLO Record: East, 80.20 chs.
 Measured: S89°29'14"E, 5295.76 ft.

I set a 30" long, 2.5" diam. aluminum monument with Oneida County aluminum cap projecting 3" above the ground surface. I established accessories as shown below and set a white plastic sign post North, 1 foot.

The coordinates shown were derived from a static GPS control survey based on the published geographic coordinates of Oneida County control station 250S.

(c) (d) (e) Plan view of corner with ties to at least 4 witness monuments. If in disagreement with previously established corner, show the distances between the two corners and also indicate the ties to the disputed.



REGISTER OF DEEDS OFFICE
 ONEIDA COUNTY, WIS.

 At _____ O'Clock _____ M
THOMAS H. LEIGHTON
 REGISTER OF DEEDS

WISCONSIN
 JEFFREY W. AUSTIN
 S-1885
 MINOCQUA, WI
LAND SURVEYOR

(i) I, Jeffrey W. Austin, Registered Land Surveyor No. S-1885, hereby certify that the corner location on this record was determined by me or under my direction and control and that this U.S. Public Land Survey Monument Record is correct and complete to the best of my knowledge and belief.

Signature Date May 5, 2011

3808110000 (INDEX NO. J-21)