

U.S. PUBLIC LAND SURVEY MONUMENT RECORD

Note: This form is intended and designed to fulfill all requirements of Wisconsin Administrative Code, Chapter A-E 7.08 U.S. Public Land Survey Monument Record (3) (a) (b) (c) (d) (e) (f) (g) (h) (i). An additional sheet may be added if necessary to conform with said requirements.

(a) Corner location: Township 38 North Corner: NW Section Corner

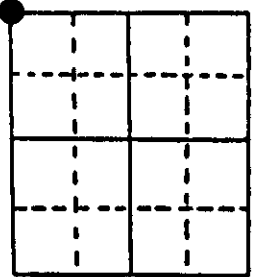
Section 18 Range 9 East Original Surveyor: Hiram Fellows

Town/City/Village Sugar Camp

County Oneida

Original B.T.'s: 12" C S36°W 7 lks
12" Bw N30°W 30 lks
10" Hem N37°E 12 lks
15" Pw S32°E 25 lks

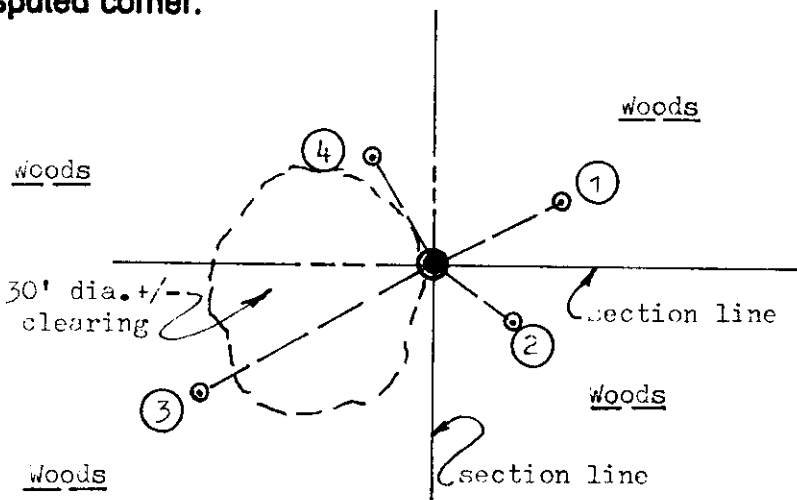
Original Survey Date: May 1859 ● Location



(b) (f) (g) (h) Description of monument found at this corner and if it was accepted, state all evidence (material, testimonial, occupational, plats, records, other monuments) used as a basis for accepting. If not accepted or if nothing was found, state evidence used as basis for establishing location. If reestablished through lost corner proportionate methods, indicate all monuments, distances and directions used to establish. Indicate type of monument found or set and sign post.

Found and accepted a standard 2" dia. iron pipe monument with stamped WCD brass cap 36" above existing grade. I could not lower the monument due to soil anchor rod at bottom and sub-surface rooting, so I stabilized base and plumbed monument for new ties. Also set a standard white poly 'T' corner marker post 1' North of the corner monument. All GLO original survey corner evidence is now obliterated except NE Hemlock OBT now a low dead stump and SE Pw OBT now a low dead stump. In 1902, Vaughn found the original corner and all four(4) OBTs at 46.66 chains West of the original North 1/4 corner of Section 18. In 1963, Berndt/WCD set the 2" iron pipe with WCD brass cap at the corner location and also noted NE and SE OBTs as stumps and other OBTs down; his new BTs: 5" Cedar N42°W 0.395 chains now unmarked Cedar and tipped 30° NE, a 12" Hemlock N61°E 0.330 chains is now a 27" Hemlock with face blazes shut but fissures plain and his 15" Hemlock S58°E 0.235 chains is now a 19" Hemlock with face blazes shut but plain. The Corner is located in a heavily wooded conifer area about 400 feet North of Stone Lake Road. This recovery completed December 11, 1997; there were no witnesses present.

(c) (d) (e) Plan view of corner with ties to at least 4 witness monuments. If in disagreement with previously established corner, show the distances between the two corners and also indicate the ties to the disputed corner.

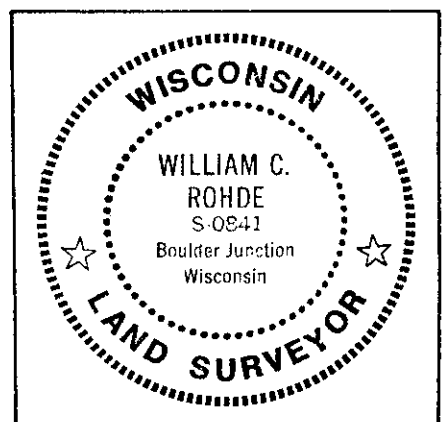


Witness Monument Ties:

- ① Record BT 17" Hemlock N63°E 21.69'.
- ② Record BT 19" Hemlock S54°E 15.46'.
- ③ New BT 9" Hemlock S61°W 41.86'.
- ④ New BT 12" Hemlock N30°W 19.09'.

Unless otherwise indicated, all BT witness monument ties are to a 1/4" dia. by 2.5" long PK nail with 1.25" dia. steel washer set in unblazed right face bark; and a PK nail with 2" dia. steel washer stamped BT also set in unblazed front face bark of each BT at DBH. All previous corner recovery notes from Wisconsin DNR and/or Oneida County survey records.

Scale: 1" = 30'



(i) I, William C. Rohde, RLS 841
(type or print name) certify that the corner location on this record was determined by me or under my direction and control and that this U.S. Public Land Survey Monument Record is correct and complete to the best of my knowledge and belief.

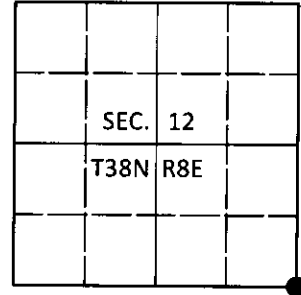
William C. Rohde Signature Date Dec. 21, 1997

U.S. PUBLIC LAND SURVEY MONUMENT RECORD

Note: This form is intended and designed to fulfill all requirements of Wisconsin Administrative Code, Chapter A-E 7.08 U.S. Public Land Survey Monument Record (3)(a-i).

(a) CORNER LOCATION
 Cor. of Secs. 7, 12, 13 & 18
 Township 38 North
 Range 8 & 9 East of the 4th P.M.
 Town of Newbold & Sugar Camp
 County of Oneida

WISCORS - Oneida County
 N: 219,931.40 USft
 E: 260,204.42 USft
 Datum: NAD 83(2011)
 GNSS Method: RTN - Offset
 GNSS Control: WISCORS VRS



(b) HISTORY OF ORIGINAL CORNER ESTABLISHMENT

Original Surveyor: _____ Original Accessories: _____
 Date of Survey Commenced: _____ See previous USPLS Monument Record
 Completed: _____

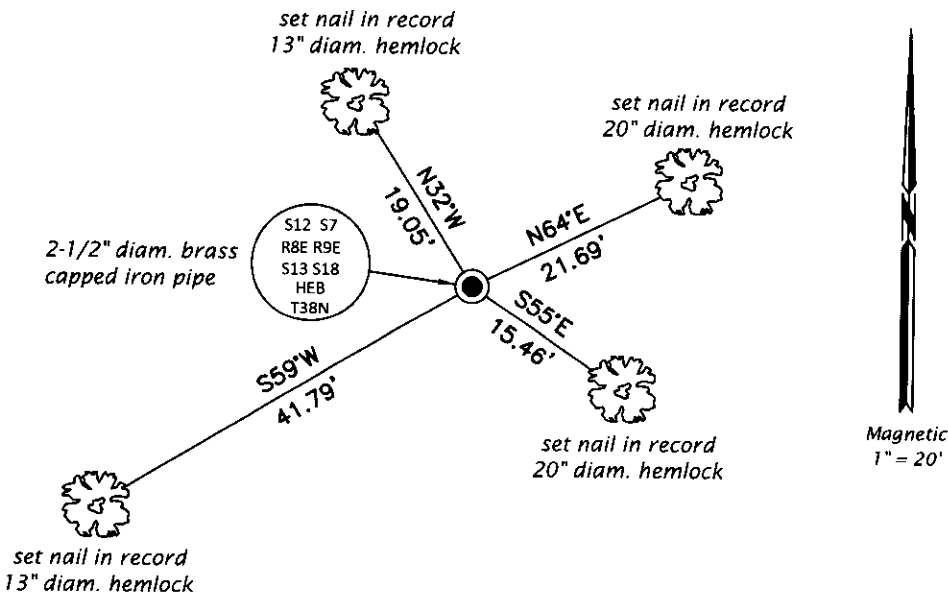
(b)(f)(g)(h) Description of monument found at this corner and if it was accepted, state all evidence (material, testimonial, occupational, plats, records, other monuments) used as a basis for accepting. If not accepted or if nothing was found, state evidence used as basis for establishing location. If re-established through lost corner proportionate methods, indicate all monuments, distances and directions used to establish. Indicate type of monument and sign post found or set.

This is a perpetuation of a previous USPLS Monument Record by William C. Rohde, RLS dated December 21, 1997 and filed in the office of the Oneida County Register of Deeds. A complete history of the corner can be found on the previous monument record. I accept the previous location as a true and faithful perpetuation or reestablishment of the original corner location and further perpetuate it as follows.

August 26, 2018: I found and accepted the record monument, a 2-1/2" diam., 48" long iron pipe with a 3" diam. WCD brass cap. As the monument was almost completely out of the ground, I reset it such that the cap is projecting 10" above the ground surface. I found the unmarked stumps of all of the GLO bearing trees except the birch. I found or established accessories as shown below. I reset the white vinyl sign post bearing Northwest, 0.8 ft.

The coordinate value shown has been verified by at least one of the following methods: 1) comparison to a previously GPS determined published value; 2) the value is the average of two or more GPS observations at a markedly different time; 3) one or more distances were measured back to the GPS observed corner from temporary GPS observed offset locations.

(c)(d)(e) Plan view of corner with ties to at least 4 witness monuments. If in disagreement with previously established corner, show the distances between the two corners and also indicate the ties to the disputed.

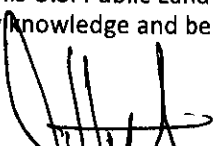


REGISTER OF DEEDS OFFICE
 ONEIDA COUNTY
 FILED

SEP 10 2018

KYLE J. FRANSON
 REGISTER OF DEEDS

(i) I, Jeffrey W. Austin, Professional Land Surveyor No. S-1885, hereby certify that the corner location on this record was determined by me or under my direction and control and that this U.S. Public Land Survey Monument Record is correct and complete to the best of my knowledge and belief.



 Signature

SEP. 5, 2018

 Date