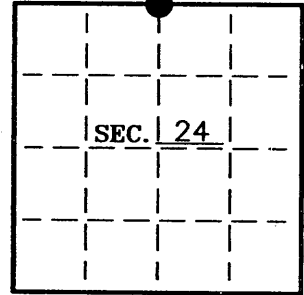


U. S. PUBLIC LAND SURVEY MONUMENT RECORD

Note: This form is intended and designed to fulfill all requirements of Wisconsin Administrative Code-Chapter A-E 7.08 U. S. Public Land Survey Monument Record (3)(a)(b)(c)(d)(e)(f)(g)(h)(i). An additional sheet may be added if necessary to conform with said requirements.

(a) CORNER LOCATION: N 1/4 corner of Sec. 24
 Township 38 North
 Range 8 East
 Town Newbold

Oneida County Coordinates
N = 214821.177
E = 257559.772
 Datum Base Oneida Co. Grid
 County of Oneida



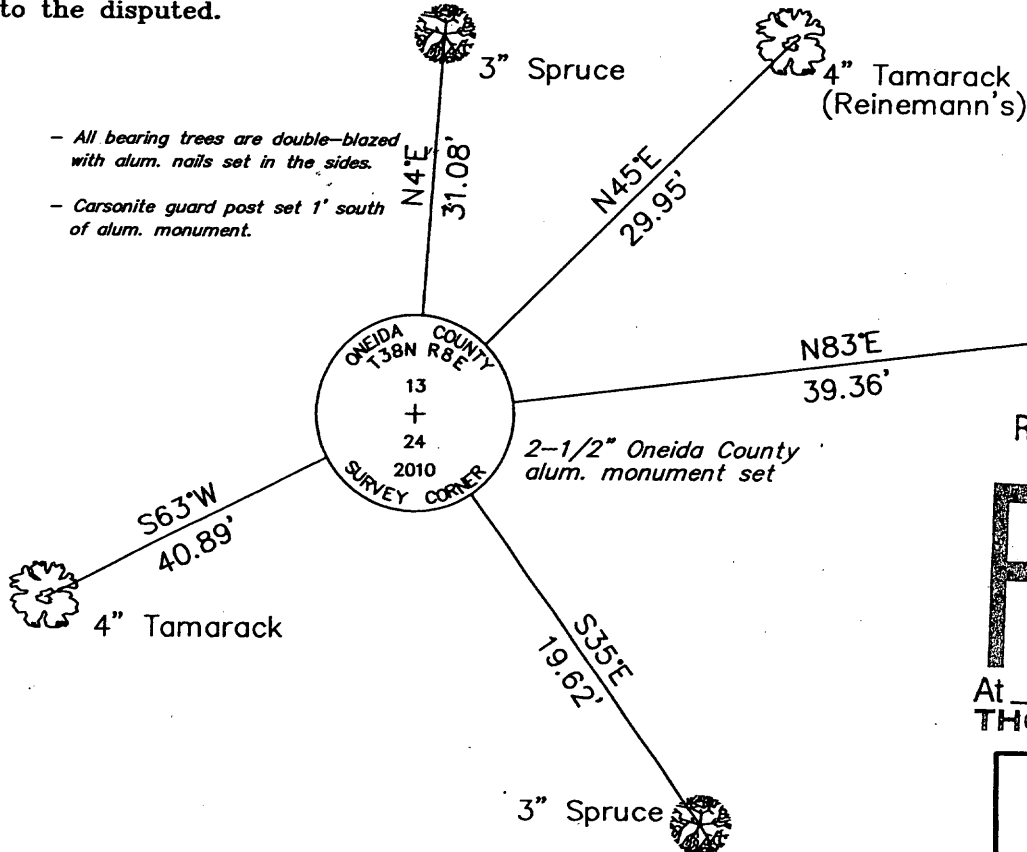
(b) HISTORY OF ORIGINAL CORNER ESTABLISHMENT:
 Original Surveyor: Alexander Anderson
 Date of Survey: Commenced July 10, 1863
 Completed July 21, 1863

Original B.T.'S
 6" Tamarack, S88°W, 170 lks
 No other trees near

(b)(f)(g)(h) Description of monument found at this corner and if it was accepted—state all evidence (material—testimonial—occupation—plats—records—other monuments) used as a basis for accepting. If not accepted or if nothing was found state evidence used as basis for establishing location. If reestablished through lost corner proportionate methods indicate all monuments—distances and directions used to establish. Indicate type of monument and sign post found or set.

- 1863 – Alexander Anderson set 1/4 section post.
- 1960 – Floyd Reinemann, while working for the Wis. Dept. of Natural Resources, set a new 1/4 corner half-way between section corners. Notes indicate there were no signs of original. He witnessed the corner with a 12" W. Pine, S7°E, 2.805 chs. and a 4" Tamarack, N40°E, 0.450 (29.7').
- 2010 – We recovered the point of Reinemann's post in an open swamp, vertical, and in very good condition, We also recovered his Tamarack bearing tree. We replaced the post with a 2-1/2" x 30" Oneida County alum. monument. We witnessed the corner as shown below.

(c)(d)(e) Plan view of corner with ties to at least 4 witness monuments. If in disagreement with previously established corner—show the distances between the two corners and also indicate the ties to the disputed.



REGISTER OF DEEDS OFFICE
 ONEIDA COUNTY, WIS.
FILED
 DEC 13 2010
 At _____ O'Clock _____ M
 THOMAS H. LEIGHTON
 REGISTER OF DEEDS

WISCONSIN
 LAND SURVEYOR
 CHARLES E. WINKLER
 S-1431
 MINOCQUA, WIS.

INDEX NO. N-23

(i) I Charles E. Winkler S-1431
 hereby certify that the corner location on this record was determined by me or under my direction and control and that this U.S. Public Land Survey Monument Record is correct and complete to the best of my knowledge and belief.

Charles E. Winkler 12/9/2010
 Signature Foltz and Associates, Inc. Date

3808130020