

U.S. PUBLIC LAND SURVEY MONUMENT RECORD

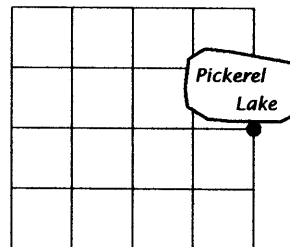
Note: This form is intended and designed to fulfill all requirements of the Wisconsin Administrative Code, Chapter A-E 7.08 U.S. Public Land Monument Record (3)(a)(b)(c)(d)(e)(f)(g)(h)(i). An additional sheet may be added if necessary to conform with said requirements.

(a) CORNER LOCATION:

east quarter of Section 13
Township 38 North
Range 8 East
Town of Newbold
County of Oneida

COORDINATES

North:
East:
Control Station:
Latitude:
Longitude:
Datum Method



SECTION 13

(b) HISTORY OF ORIGINAL CORNER ESTABLISHMENT

Original Surveyor: H.C. Fellows
Date of Survey: Commenced, July 1859
Completed, July 1859

Original B.T.'S
Maple 5" dia. S63E 14 links
Fir 8" dia. S38W 40 links

(f)(g)(h) DESCRIPTION OF MONUMENT FOUND AT THIS CORNER AND IF IT WAS ACCEPTED, STATE ALL EVIDENCE (MATERIAL, TESTIMONIAL, OCCUPATIONS, PLATS, RECORDS, OTHER MONUMENTS) USED AS A BASIS FOR ESTABLISHING LOCATION. IF NOT ACCEPTED OF IF NOTHING WAS FOUND, STATE EVIDENCE USED AS BASIS FOR ESTABLISHING LOCATION. IF REESTABLISHED THROUGH LOST CORNER PROPORTIONATE METHODS, INDICATE ALL MONUMENTS, DISTANCES AND DIRECTIONS USED TO ESTABLISH. INDICATE TYPE OF MONUMENT AND SIGN POST FOUND OR SET.

Original Surveyor: H.C. Fellows, at 40 chains set quarter post.

B.F. Dorr: 1/16/1896, recovered corner and noted the original Fir bearing tree is now a stump, and the original Maple bearing tree is still standing.

D.H. Vaughn: 9/30/02, found Dorr's post, and the original Maple bearing tree.

E.F. Kowalke: 12/56, at 39.76 chains north of southeast corner set quarter corner, a brass capped iron pipe, and makes the following bearing trees, W. Pine 17" dia. N77W 39.3' and W. Birch 12" dia. N52W 33.3'

Michael L. Oestreich: 9/28/02, recovered a W.C.D. brass capped iron pipe, and the bearing trees made by Kowalke. I made additional ties as shown in plan below.

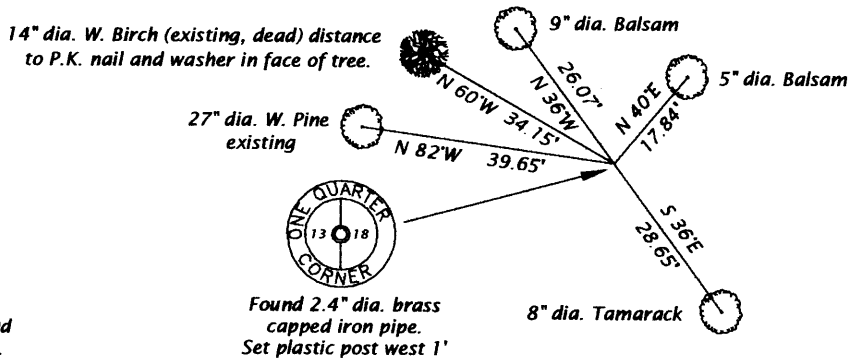
(c)(d)(e) PLAN VIEW OF CORNER WITH TIES TO AT LEAST 4 WITNESS MONUMENTS. IF IN DISAGREEMENT WITH PREVIOUSLY ESTABLISHED CORNER, SHOW THE DISTANCE BETWEEN THE TWO CORNERS AND ALSO INDICATE THE TIES TO THE DISPUTED CORNER.

Bearings magnetic



Scale 1" = 30'

Measurement to trees taken to 10d aluminum nail in the side of tree.



(i) I, MICHAEL L. OESTREICH, REGISTERED LAND SURVEYOR NO. S-2118 HEREBY CERTIFY THAT THE CORNER LOCATION ON THIS RECORD WAS DETERMINED BY ME OR UNDER MY DIRECTION AND CONTROL AND THAT THIS U.S. PUBLIC LAND SURVEY MONUMENT RECORD IS CORRECT AND COMPLETE TO THE BEST OF MY KNOWLEDGE AND BELIEF.

Michael L. Oestreich 12/6/04
SIGNATURE DATE



INDEX NO. L 25