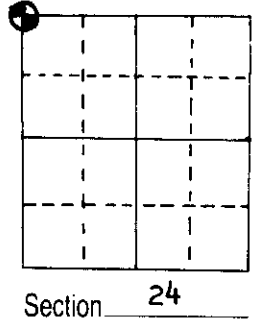


U.S. PUBLIC LAND SURVEY MONUMENT RECORD

Note: This form is intended and designed to fulfill all requirements of Wisconsin Administrative Code, Chapter A-E 5.02, U.S. Public Land Survey Monument Record (3) (a) (b) (c) (d) (e) (f) (g) (h) (i). An additional sheet may be added if necessary to conform with said requirements.

(a) Corner location: Township 38 North
 Range 8 East/~~West~~

Town ~~City/Village~~ Newbold
 County Oneida



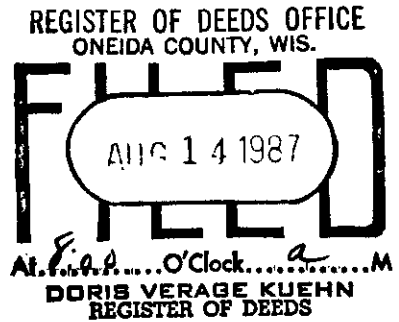
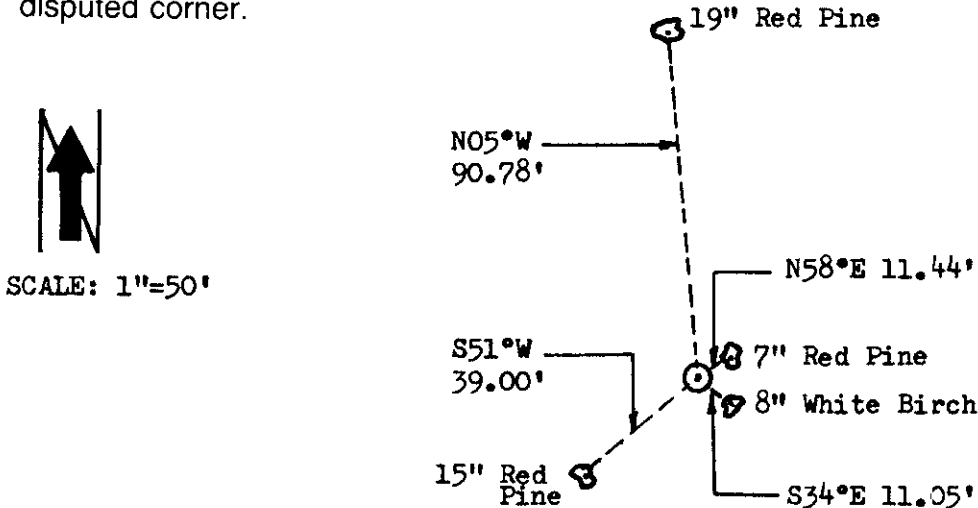
(b) (f) (g) (h) Description of monument found at this corner and if it was accepted, state all evidence (material, testimonial, occupational, plats, records, other monuments) used as a basis for accepting. If not accepted or if nothing was found, state evidence used as basis for establishing location. If reestablished through lost corner proportionate methods, indicate all monuments, distances and directions used to establish.

Original U.S. Govt. Survey corner post set by Deputy Surveyor Alexander Anderson, July 10, 1863.

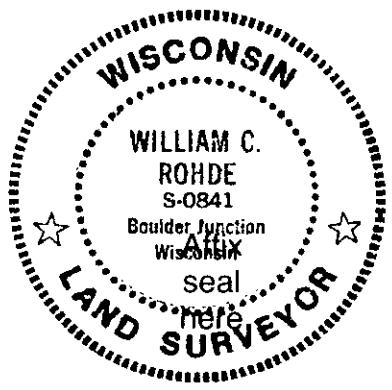
A 1954 survey map by Alvin E. Nelson, filed in Wisconsin DNR records at Trout Lake Hq, indicates corner post by Dorr at original corner. Corner location re-monumented by Nelson between 1954 and 1960.

2" dia. iron pipe monument with stamped WCD brass cap found at corner by Norbert Vissers, DNR Surveyor, on June 8, 1987. NW and SW bearing trees found previously blazed and scribed, but grown shut; rescribed for record. Set standard wood marker post with aluminum corner location tag 225 feet north of corner monument on south edge of Stone Lake Road. New NE and SE bearing trees selected and scribed for record.

(c) (d) (e) Plan view of corner with ties to at least 4 witness monuments. If in disagreement with previously established corner, show the distances between the two corners and also indicate the ties to the disputed corner.



(i) I, William C. Rohde, Land Control Supervisor, Wisconsin DNR,
 (type or print name) certify that the corner location on this record was determined by me or under my direction and control and that this U.S. Public Land Survey Monument Record is correct and complete to the best of my knowledge and belief.



William C. Rohde July 21, 1987
 Signature Date

3808140000 N-21