

# U.S. PUBLIC LAND SURVEY MONUMENT RECORD

REGISTER OF DEEDS OFFICE  
ONEIDA COUNTY  
FILED

MAR 25 2014

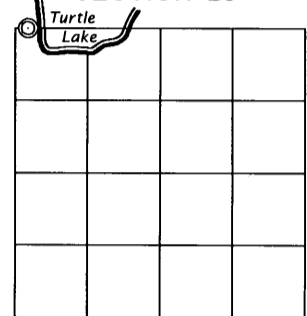
Note: This form is intended and designed to fulfill all requirements of the Wisconsin Administrative Code, Chapter A-E 7.08 U.S. Public Land Monument Record (3)(a)(b)(c)(d)(e)(f)(g)(h)(i). An additional sheet may be added if necessary to conform with said requirements.

AT \_\_\_\_\_ O'CLOCK \_\_\_\_\_ M  
KYLE J. FRANSON  
REGISTER OF DEEDS

(a) CORNER LOCATION: ONEIDA CO. COORDINATES  
West M. C. north line of Section 23 North: 214898.02'  
Township 38 North East: 249971.42'  
Range 8 East Control Station: WISCORS Network  
Town of Newbold Latitude:  
County of Oneida Longitude:  
Datum: NAD 83(2011)  
Method: Offset RTK GPS

(RECORDING AREA)

SECTION 23



(b) HISTORY OF ORIGINAL CORNER ESTABLISHMENT

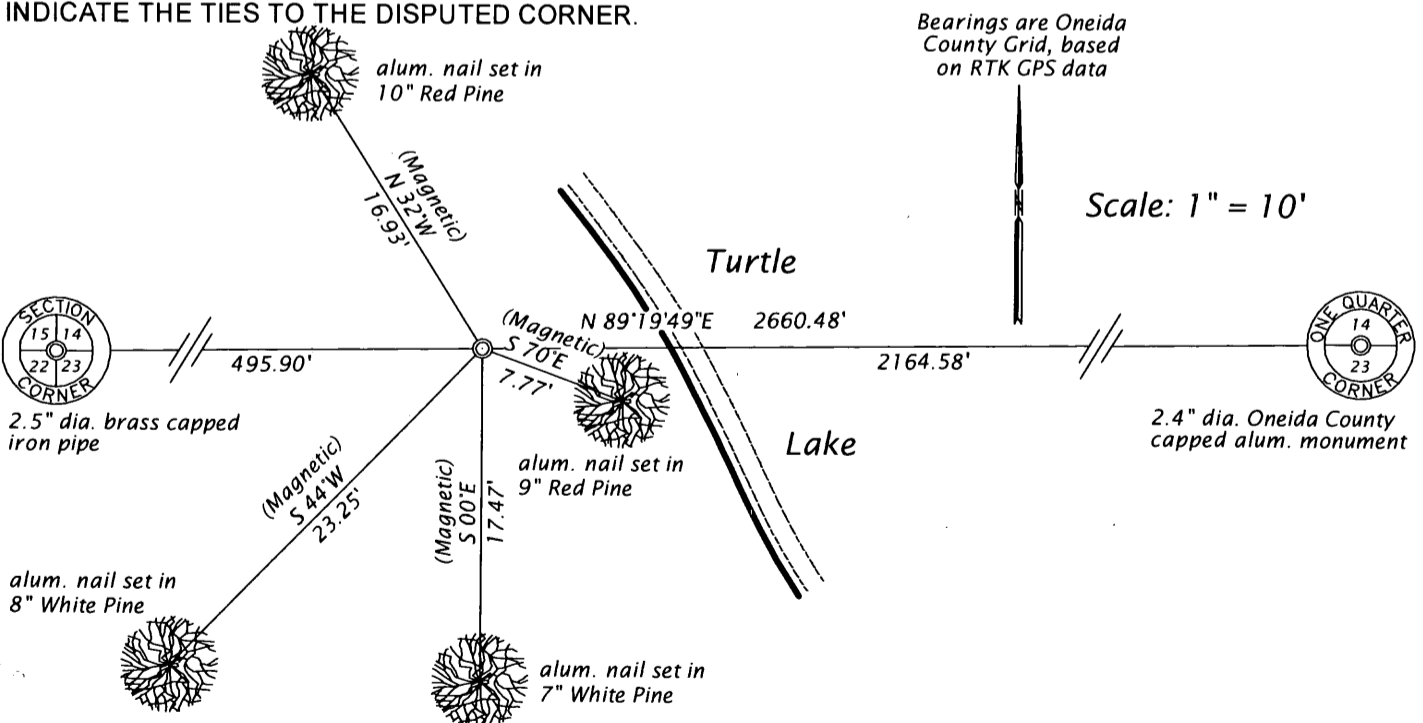
Original Surveyor: Alexander Anderson  
Date of Survey: Commenced July 10, 1863  
Completed July 21, 1863  
Original B.T.'S: W. Pine 12", S3°E, 24 lks.  
Tamarack 8", N75°W, 26 lks.

(f)(g)(h) DESCRIPTION OF MONUMENT FOUND AT THIS CORNER AND IF IT WAS ACCEPTED, STATE ALL EVIDENCE (MATERIAL, TESTIMONIAL, OCCUPATIONAL, PLATS, RECORDS, OTHER MONUMENTS) USED AS A BASIS FOR ESTABLISHING LOCATION. IF NOT ACCEPTED OF IF NOTHING WAS FOUND, STATE EVIDENCE USED AS BASIS FOR ESTABLISHING LOCATION. IF REESTABLISHED THROUGH LOST CORNER PROPORTIONATE METHODS, INDICATE ALL MONUMENTS, DISTANCES AND DIRECTIONS USED TO ESTABLISH. INDICATE TYPE OF MONUMENT AND SIGN POST FOUND OR SET.

June 9, 1935 - V. Maine, Oneida County Surveyor - Book II, page 4 - found Orig. Gov't. M.C. on West Bank of Turtle Lake identified by Orig. B.T. now a stp. W.P. 12, S3°E, 24 links.

December 23, 2013 - James D. Rein, RLS No. S-1234 - found no evidence of Orig. Gov't. M.C. We set an Oneida County capped 2.4" dia. x 30" long flange bottom aluminum monument for the corner near the west shore of Turtle Lake on line between the northwest Section Corner and the North Quarter Corner. Set a white poly guard post near corner.

(c)(d)(e) PLAN VIEW OF CORNER WITH TIES TO AT LEAST 4 WITNESS MONUMENTS. IF IN DISAGREEMENT WITH PREVIOUSLY ESTABLISHED CORNER, SHOW THE DISTANCE BETWEEN THE TWO CORNERS AND ALSO INDICATE THE TIES TO THE DISPUTED CORNER.



(i) I, JAMES D. REIN, PROFESSIONAL LAND SURVEYOR NO. S-1234 HEREBY CERTIFY THAT THE CORNER LOCATION ON THIS RECORD WAS DETERMINED BY ME OR UNDER MY DIRECTION AND CONTROL AND THAT THIS U.S. PUBLIC LAND SURVEY MONUMENT RECORD IS CORRECT AND COMPLETE TO THE BEST OF MY KNOWLEDGE AND BELIEF.

*[Signature]*  
SIGNATURE  
2-13-2014  
DATE



3808140032

INDEX NO. N17-18