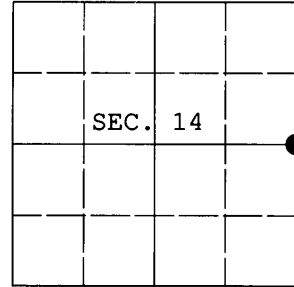


**U.S. PUBLIC LAND SURVEY MONUMENT RECORD**

Note: This form is intended and designed to fulfill all requirements of Wisconsin Administrative Code, Chapter A-E 7.08 U.S. Public Land Survey Monument Record (3) (a) (b) (c) (d) (e) (f) (g) (h) (i). An additional sheet may be added if necessary to conform with said requirements.

(a) CORNER LOCATION: Plane Coordinates  
 1/4 Cor. of Secs. 13 & 14 N: 217,456.894 USft  
 Township 38 North E: 254,868.843 USft  
 Range 8 East Datum: NAD 83/91 (ONEIDA91)  
 Town of Newbold County of Oneida



(b) HISTORY OF ORIGINAL CORNER ESTABLISHMENT

Original Surveyor: Alexander Anderson Original Accessories:  
 Date of Survey: Commenced July 10, 1863 tamarack 7" S10°E, 15 lks.  
 Completed July 21, 1863 tamarack 8" S49°W, 6 lks.

(b) (f) (g) (h) Description of monument found at this corner and if it was accepted, state all evidence (material, testimonial, occupational, plats, records, other monuments) used as a basis for accepting. If not accepted or if nothing was found, state evidence used as basis for establishing location. If re-established through lost corner proportionate methods, indicate all monuments, distances and directions used to establish. Indicate type of monument and sign post found or set.

November 19, 1897: Notes by B.F. Dorr on page 179. Dorr retraced the mile common to Secs. 13 and 14 and was unable to locate the original quarter-section corner. He re-established the quarter-section corner at the midpoint of the mile that he found to be 77.26 chs. in length. He made a new bearing tree: pine 18" S13-1/4°E, 25 lks.

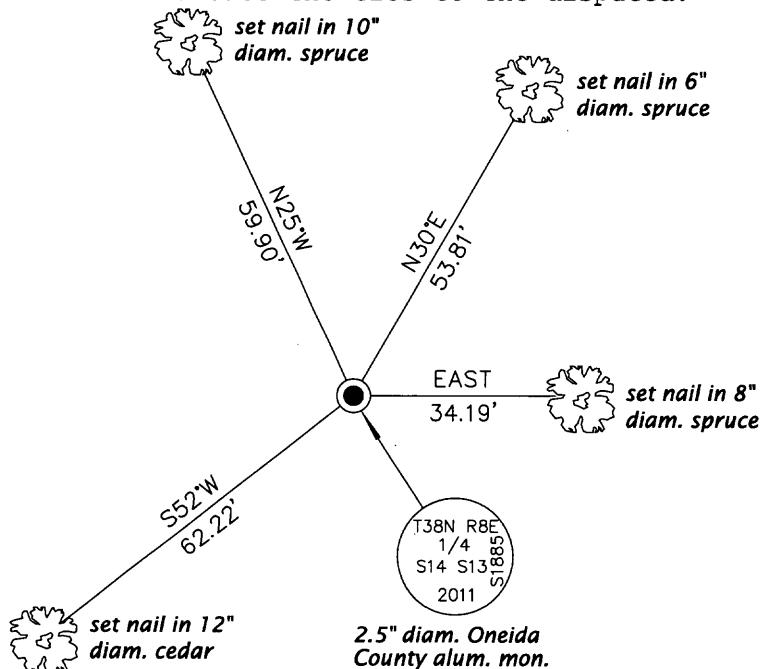
April 24, 2011: During a thorough search, I found what I believe to be the remains of Dorr's corner. In a scattered ring of rocks, I found a noticeable void in the soil with a distinct discoloration down to a depth of 1 foot. From this point, I found the unmarked remains of a white pine stump, size indeterminate, bearing S13°E, 16.5 feet to a point slightly short of the center of the stump. The stump is unique in that there are no other stumps of this type in the area and the size and amount of decay is consistent with what would be expected. Although the distance South to 3808140000 is about 35 feet short of Dorr's record, I believe this is the best remaining evidence of his proportioned corner location. The location is further supported by the comparison of the distance West to 3808152000 as follows:

Dorr's Record: 82.13 chs.  
 Measured/Computed: 5428.50 ft.

I set a 30" long, 2.5" diam. aluminum monument with Oneida County aluminum cap projecting 3" above the ground surface. I established accessories as shown below and set a white plastic sign post Northeast, 1 foot.

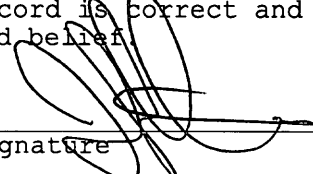
The coordinates shown were derived from a static GPS control survey based on the published geographic coordinates of Oneida County control station 250S.

(c) (d) (e) Plan view of corner with ties to at least 4 witness monuments. If in disagreement with previously established corner, show the distances between the two corners and also indicate the ties to the disputed.



REGISTER OF DEEDS OFFICE  
 ONEIDA COUNTY, WIS.  
**FILED**  
 MAY 10 2011  
 At \_\_\_\_\_ O'Clock \_\_\_\_\_ M  
**THOMAS H. LEIGHTON**  
 REGISTER OF DEEDS

(i) I, Jeffrey W. Austin, Registered Land Surveyor No. S-1885, hereby certify that the corner location on this record was determined by me or under my direction and control and that this U.S. Public Land Survey Monument Record is correct and complete to the best of my knowledge and belief.

  
 Signature

MAY 5, 2011  
 Date



3808142000 (INDEX NO. L-21)