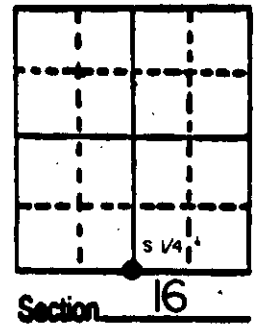


U.S. PUBLIC LAND SURVEY MONUMENT RECORD

Note: This form is intended and designed to fulfill all requirements of Wisconsin Administrative Code, Chapter A-E 5.02, U.S. Public Land Survey Monument Record (3) (a) (b) (c) (d) (e) (f) (g) (h) (i). An additional sheet may be added if necessary to conform with said requirements.

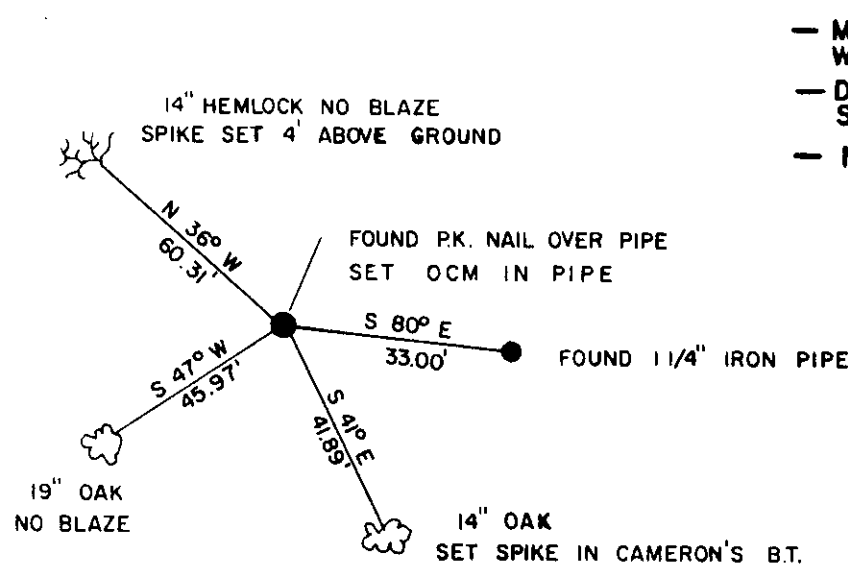
(a) Corner location: Township 38 North
 Range 8 East/West
 Town/City/Village of NEWBOLD
 County of ONEIDA



(b) (f) (g) (h) Description of monument found at this corner and if it was accepted, state all evidence (material, testimonial, occupational, plats, records, other monuments) used as a basis for accepting. If not accepted or if nothing was found, state evidence used as basis for establishing location. If reestablished through lost corner proportionate methods, indicate all monuments, distances and directions used to establish.

- 1863 Original corner by Alexander Anderson. West between 16 & 21, 40.25 set $\frac{1}{4}$ post. BT's W. Pine 10" N89W 8, W. Pine 10" South 4.
- 1922 D.H. Vaughan at corner & made BT W. Pine S50W 37'
- 1963 Cameron at corner & found Vaughan's W. Pine. He set an iron pipe East 33.0' and made Oak BT S44E 41.7'
- 1987 I found a PK nail over an iron pipe, Cameron's iron pipe and Oak BT as shown below. I set an Oneida County Aluminum stem monument inside iron pipe. Made new BT's as shown below.

(c) (d) (e) Plan view of corner with ties to at least 4 witness monuments. If in disagreement with previously established corner, show the distances between the two corners and also indicate the ties to the disputed corner.



- Magnetic Bearings Taken With Handheld Compass
- Distance to 6" Nail in Side of tree
- No Scale

REGISTER OF DEEDS OFFICE
ONEIDA COUNTY, WIS.

FILED

MAY 1 1987

At 8:00 O'clock a.m.
DORIS VERABE KUEHN
REGISTER OF DEEDS

(i) I, William E. Bandow
 (type or print name) certify that the corner location on this record was determined by me or under my direction and control and that this U.S. Public Land Survey Monument Record is correct and complete to the best of my knowledge and belief.

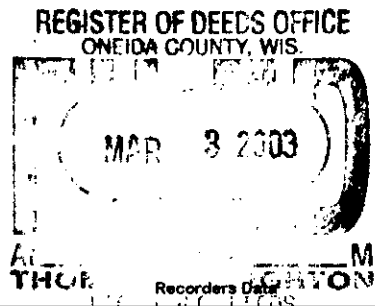
William E. Bandow 5-1-87
 Signature Date

GENISOT & ASSOCIATES INC.
 1512 EAGLE ST., RHINELANDER, WIS.



Index No. N-11

3808160020



This form is intended to fulfill the requirements of Chapter A-E 7.08 (3)(a) thru (i) U.S. Public Land Survey Monument Location Record, Wisconsin Administrative Code. Use the reverse side of form for continuation.

U.S. PUBLIC LAND SURVEY MONUMENT LOCATION RECORD

USPLS CORNER: NORTH 1/4 CORNER SECTION: 21 TOWNSHIP: 38 NORTH RANGE: 8 EAST
 NAME OF WATERWAY FOR M.C. CORNER : N/A SECTION LINE: N/A
 (CITY)(VILLAGE)(TOWN) OF: NEWBOLD COUNTY OF: ONEIDA

Description of monument found or placed and all other evidence used as the basis for monument location; including monuments and related measurements required if the corner location was reestablished by lost corner proportionate methods. Also indicate name of original surveyor, original survey date and the corner monument, bearing trees, witness or other reference monuments established; including measured bearing and distance ties, from available records.

THIS CORNER WAS RE-REFERENCED AT THE REQUEST OF ONEIDA COUNTY SURVEYOR MICHAEL J. ROMPORTL DUE TO PENDING TOWN ROADWAY WORK.

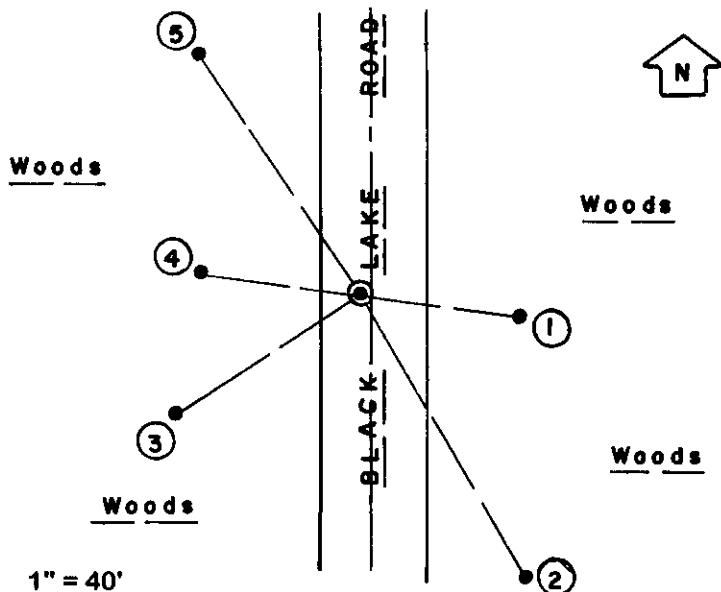
This corner was last referenced per U.S. Public Land Survey Monument Location Record by William E. Bandow/RLS 1182 as filed May 1, 1987 in Oneida County records, which should be referred to for historical documentation.

I found and removed an older 3/16" dia. x 1" long PK nail per ties from existing blacktop pavement and reset a 1/2" dia. x 4.5" long tapered stainless steel pin with geared top flush with pavement at old PK nail location, which falls 1.5' West of mat centerline. I did not excavate for record iron pipe noted below grade at the corner as no positive MLR detected.

On June 10, 1994 Milo Stefan/RLS 1558 found an iron pipe at corner and references: 1.25" dia. iron pipe S80°E 33.22'; an older 12" Hemlock BT N36°W 60.40'; an older 20" Red Oak BT S47°W 45.92'; record Oak BT S41°E found destroyed; and marked new BTs: 10" Hemlock S84°E 83.39' and a 14" Red Oak S30°E 68.68'; all per field notes filed in Oneida County survey records. I found and used the iron pipe reference monument and three(3) older BT references for new ties listed below. Standard white poly 'T' marker post was also found 6" West of older 1.25" dia. reference pipe East of corner.

This recovery completed September 12, 2002; there were no direct witnesses.

Plan view map of monument location with bearing and distance ties to a minimum of four(4) described witness or reference monuments of concrete, natural stone, iron, live bearing trees or equivalent material. If applicable, also show a minimum of two(2) bearing and distance ties to any other monument found and not accepted; including the bearing and distance from the accepted monument.



WITNESS MONUMENT TIES:

- ① Old 1.25" dia. galvanized iron pipe found with split uncapped top 7" up & tipped 3" East of plumb S82°E 33.17'.
- ② Old 14" Or BT with upper & lower face blaze scars plain S30°E 68.61'.
- ③ Old 22" Or BT S57°W 45.48'.
- ④ 5/8" dia. by 24" long rebar set with yellow poly RM cap 2" up N82°W 33.79'.
- ⑤ Old 16" Hemlock BT N34°W 60.26'.

Older spikes found in old BTs not used for new ties.

SCALE: 1" = 40'

Unless otherwise indicated, all bearing tree ties are to a .25" dia. by 2.5" long PK nail with a 1.25" dia. steel washer driven into unblazed right face and a .25" dia. by 2.5" long PK nail with a 2" dia. steel washer stamped BT is also driven into unblazed face of bearing tree at DBH; the basis for measured bearings is by compass to nearest degree and all tie distances are measured horizontal by steel tape corrected to nearest 1/100th feet at standard temperature of 68° F.

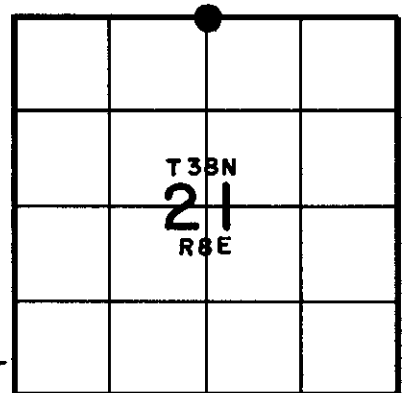
RLS SEAL:



LAND SURVEYOR CERTIFICATE:

I, William C. Rohde, hereby certify that I am duly licensed as a Professional Land Surveyor in the State of Wisconsin; that this USPLS monument location was determined by me and/or under my direct supervision and control; and that this U.S. Public Land Survey Monument Location Record is true and correct to the best of my knowledge and belief.

Signed: *William C. Rohde*
 William C. Rohde RLS 841



SECTION LOCATION MAP
 INDEX NO. N 11

Date Signed: March 1, 2003

3808160020

