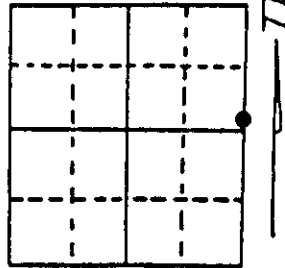


# U.S. PUBLIC LAND SURVEY MONUMENT RECORD

Note: This form is intended and designed to fulfill all requirements of Wisconsin Administrative Code, Chapter A-E 7.08 U.S. Public Land Survey Monument Record (3) (a) (b) (c) (d) (e) (f) (g) (h) (i). An additional sheet may be added if necessary to conform with said requirements.

(a) Corner location: Township 38 North  
 Range 8 East/West

Meander Corner on the  
 northeasterly shore of  
 Brown Lake. #40



Section 16

Town/City/Village Newbold

County Oneida

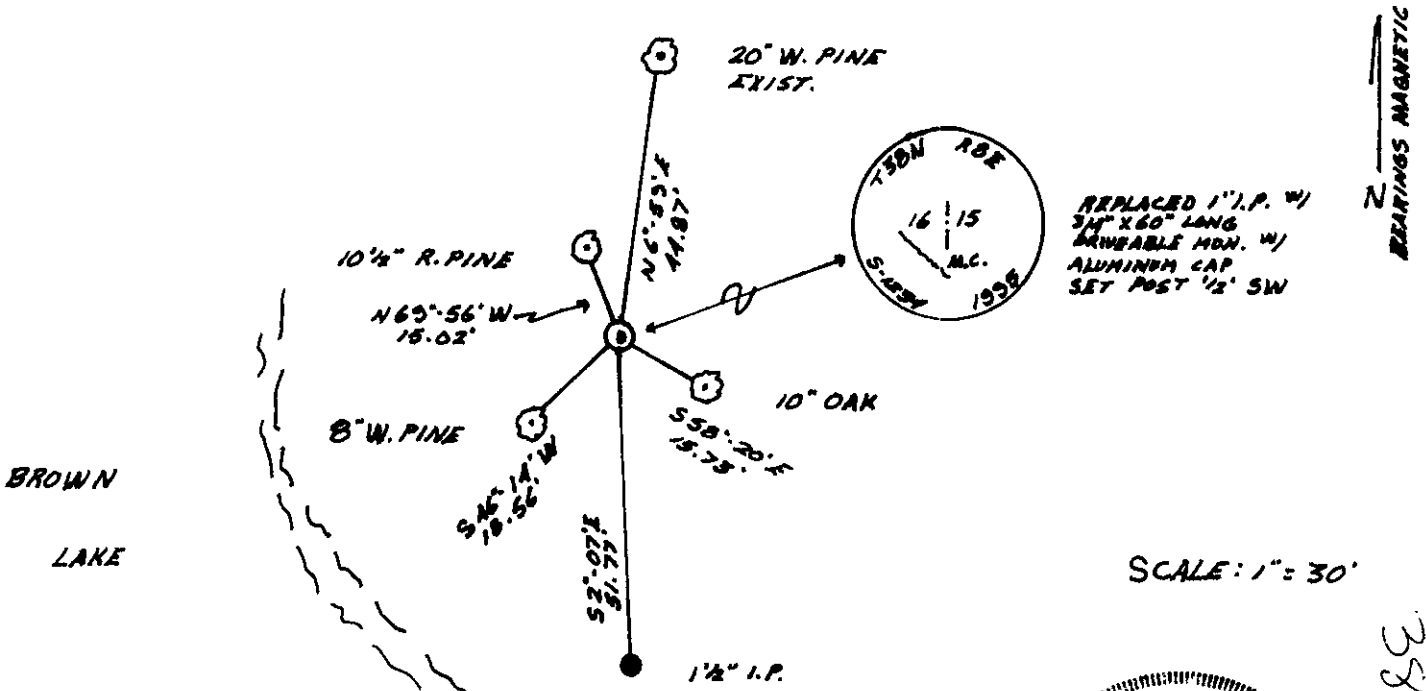
(b) (f) (g) (h) Description of monument found at this corner and if it was accepted, state all evidence (material, testimonial, occupational, plats, records, other monuments) used as a basis for accepting. If not accepted or if nothing was found, state evidence used as basis for establishing location. If reestablished through lost corner proportionate methods, indicate all monuments, distances and directions used to establish. Indicate type of monument found or set and sign post.

July, 1863 - Alexander Anderson, Deputy Surveyor: Set post for Meander Corner referenced by: W. Pine 20" S85°E, 16 links and a Birch 9" N11½°W, 33 links.

May 21st, 1930 - H. C. Hall, Oneida County Surveyor: Drove a pitch post from evidence of Original B.T. stump S85°E, .16 chains; Made new bearing tree (at SE edge of Swamp) W. Pine 18" N8°E, .67½ chains.

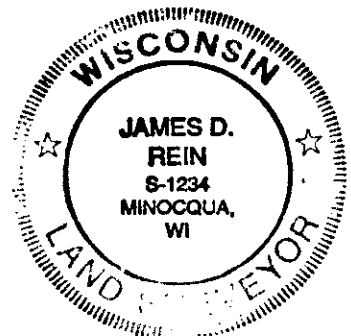
February 22nd, 1995 - James D. Rein, RLS No. 1234: Replaced 1" dia. iron pipe a capped 1" dia. x 60" long push type aluminum monument for corner. Hall's bearing tree at edge of wetland bears N6°-59'E, 44.87 feet. Set Oneida County plastic stake 1/2 foot southwest of corner monument. Distances shown on plan represent a measurement between the monument and an aluminum nail set in the root crown on a side of the bearing tree.

(c) (d) (e) Plan view of corner with ties to at least 4 witness monuments. If in disagreement with previously established corner, show the distances between the two corners and also indicate the ties to the disputed corner.



(i) I, JAMES D. REIN RLS # 1234  
 (type or print name) certify that the corner location on this record was determined by me or under my direction and control and that this U.S. Public Land Survey Monument Record is correct and complete to the best of my knowledge and belief.

James D. Rein 2/22/95  
 Signature Date



BEARINGS MAGNETIC  
 3808162100  
 Index No. L-13

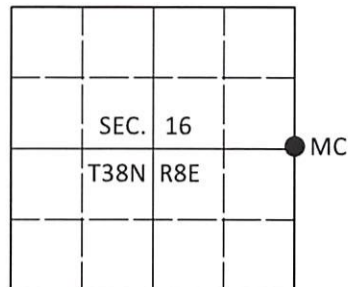
Stamp 3808162100

# U.S. PUBLIC LAND SURVEY MONUMENT RECORD

Note: This form is intended and designed to fulfill all requirements of Wisconsin Administrative Code, Chapter A-E 7.08 U.S. Public Land Survey Monument Record (3)(a-i).

(a) CORNER LOCATION  
 Meander Cor. of Secs. 15 & 16  
 Township 38 North  
 Range 8 East of the 4th P.M.  
 Town of Newbold  
 County of Oneida

WISCRS - Oneida County  
 N: 217,507.39 USft  
 E: 244,203.46 USft  
 Datum: NAD 83(2011)  
 GNSS Method: RTN - Offset  
 GNSS Control: WISCORS VRS



(b) HISTORY OF ORIGINAL CORNER ESTABLISHMENT

Original Surveyor: \_\_\_\_\_ Original Accessories: \_\_\_\_\_  
 Date of Survey Commenced: \_\_\_\_\_ See previous monument record(s)  
 Completed: \_\_\_\_\_

(b)(f)(g)(h) Description of monument found at this corner and if it was accepted, state all evidence (material, testimonial, occupational, plats, records, other monuments) used as a basis for accepting. If not accepted or if nothing was found, state evidence used as basis for establishing location. If re-established through lost corner proportionate methods, indicate all monuments, distances and directions used to establish. Indicate type of monument and sign post found or set.

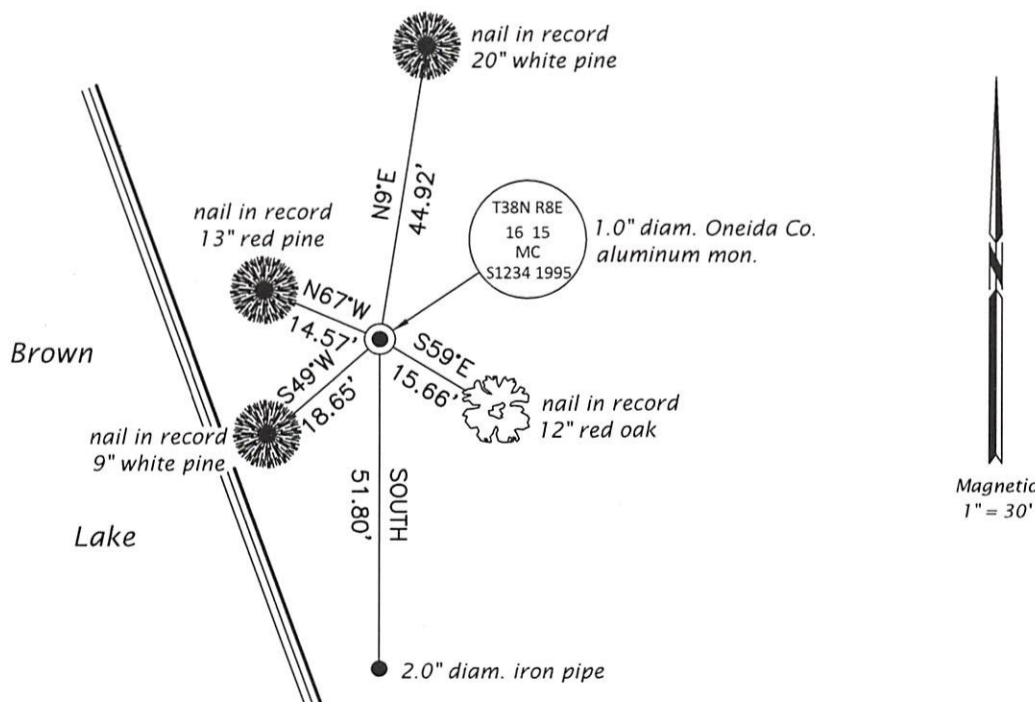
*This is a perpetuation of the following monument record(s) that comprise a complete history of the corner:*

*Feb. 22, 1995: USPLS Monument Record No. 3808162100 by James D. Rein, PLS*

*Sep. 19, 2020: I found and accepted the record monument, a 1.0" diam. aluminum pipe with a 2.5" diam. Oneida Co. aluminum cap flush with the ground surface. I found or established accessories as shown below. I found a white vinyl sign post bearing South, 0.4 ft.*

*The coordinate value shown has been verified by at least one of the following methods: 1) comparison to a previously GPS determined published value; 2) the value is the average of two or more GPS observations at a markedly different time; 3) one or more distances were measured back to the GPS observed corner from temporary GPS observed offset locations.*

(c)(d)(e) Plan view of corner with ties to at least 4 witness monuments. If in disagreement with previously established corner, show the distances between the two corners and also indicate the ties to the disputed.




REGISTER OF DEEDS OFFICE  
 ONEIDA COUNTY  
 FILED

JAN 13 2021

KYLE J. FRANSON  
 REGISTER OF DEEDS

(i) I, Jeffrey W. Austin, Professional Land Surveyor No. S-1885, hereby certify that the corner location on this record was determined by me or under my direction and control and that this U.S. Public Land Survey Monument Record is correct and complete to the best of my knowledge and belief.

 Signature \_\_\_\_\_ 15 DEC 2020 Date \_\_\_\_\_