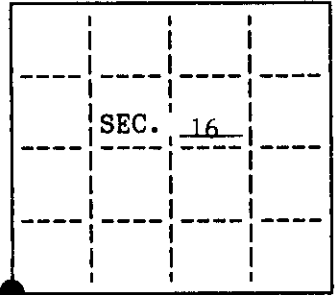


**U.S. PUBLIC LAND SURVEY MONUMENT RECORD**

Note: This form is intended and designed to fulfill all requirements of Wisconsin Administrative Code, Chapter A-E 7.08 U.S. Public Land Survey Monument Record (3)(a)(b)(c)(d)(e)(f)(g)(h)(i). An additional sheet may be added if necessary to conform with said requirements.

(a) CORNER LOCATION: State Plane Coordinates  
 SW corner of Sec. 16 X ---  
 Township 38 North Y ---  
 Range 8 East Datum Base ---  
 Town/City Newhold County of Oneida



(b) HISTORY OF ORIGINAL CORNER ESTABLISHMENT  
 Original Surveyor: Alex Anderson  
 Date of Survey: Commenced July, 1863  
 Completed

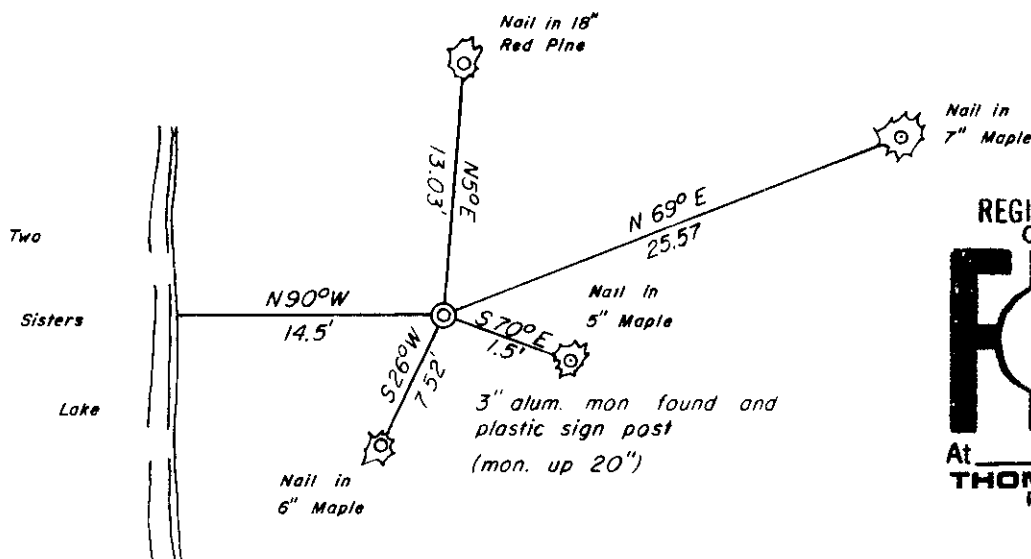
Original B.T.'S  
 No bearing trees shown.

(b)(f)(g)(h) Description of monument found at this corner and if it was accepted, state all evidence (material, testimonial, occupational, plats, records, other monuments) used as a basis for accepting. If not accepted or if nothing was found, state evidence used as basis for establishing location. If reestablished through lost corner proportionate methods, indicate all monuments, distances and directions used to establish. Indicate type of monument and sign post found or set.

1966 - Northwood Surveyors found and accepted a 3/4" iron pipe for the Sec. Cor. Their notes indicate there were no bearing trees present.

1994 - I found and accepted a 3" capped alum. mon. as the correct corner position. The four bearing trees shown below were found blazed and nails already present.

(c)(d)(e) Plan view of corner with ties to at least 4 witness monuments. If in disagreement with previously established corner, show the distances between the two corners and also indicate the ties to the disputed.



REGISTER OF DEEDS OFFICE  
 ONEIDA COUNTY, WIS  
**FILED**  
 APR 5 1995  
 At O'Clock M  
 THOMAS H. LEIGHTON  
 REGISTER OF DEEDS

(i) I, Charles E. Winkler S-1431  
 hereby certify that the corner location on this record was determined by me or under my direction and control and that this U.S. Public Land Survey Monument Record is correct and complete to the best of my knowledge and belief.

Signature Charles E. Winkler Date 3-31-95  
 Foltz and Associates, Inc.



INDEX NO. 2-9

3808170000