

At O'Clock M
THOMAS H. LEIGHTON
REGISTER OF DEEDS

U.S. PUBLIC LAND SURVEY MONUMENT RECORD

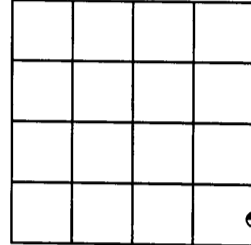
Note: This form is intended and designed to fulfill all requirements of the Wisconsin Administrative Code, Chapter A-E 7.08 U.S. Public Land Monument Record (3)(a)(b)(c)(d)(e)(f)(g)(h)(i). An additional sheet may be added if necessary to conform with said requirements.

(a) CORNER LOCATION:

Meander Corner, Sec.17
Township 38 North
Range 8 East
Town of Newbold
County of Oneida

COORDINATES

North: _____
East: _____
Control Station: _____
Latitude: _____
Longitude: _____
Datum: _____ Method: _____



SECTION 17

(b) HISTORY OF ORIGINAL CORNER ESTABLISHMENT

Original Surveyor: Alexander Anderson
Date of Survey: Commenced July 10, 1863
Completed July 21, 1863

Original B.T.'S:
9° Tamarac; N50°W, 22 links
9° Tamarac; N6°W, 22 links

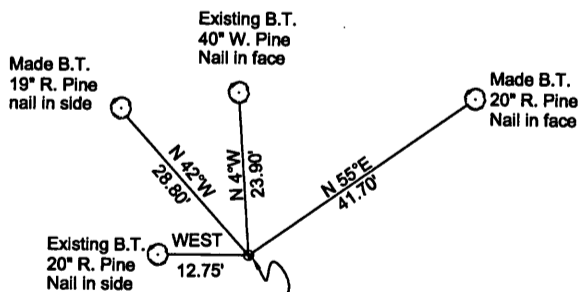
(f)(g)(h) DESCRIPTION OF MONUMENT FOUND AT THIS CORNER AND IF IT WAS ACCEPTED, STATE ALL EVIDENCE (MATERIAL, TESTIMONIAL, OCCUPATIONS, PLATS, RECORDS, OTHER MONUMENTS) USED AS A BASIS FOR ESTABLISHING LOCATION. IF NOT ACCEPTED OR IF NOTHING WAS FOUND, STATE EVIDENCE USED AS BASIS FOR ESTABLISHING LOCATION. IF REESTABLISHED THROUGH LOST CORNER PROPORTIONATE METHODS, INDICATE ALL MONUMENTS, DISTANCES AND DIRECTIONS USED TO ESTABLISH. INDICATE TYPE OF MONUMENT AND SIGN POST FOUND OR SET.

March 14, 1966: Field notes by Northwoods Surveyors - Set a 1 1/2" dia. iron pipe and a Tamarack post scribed "M.C". Also made bearing tree, 10" Maple, N83E, 11.5 feet.

October 7, 1980: Survey map by Herbert Moore filed in Oneida County Register of Deeds, of C.S.M.'s map No. 650, Volume 3, Page 828 identifies this corner as a 1 1/4" iron pipe. BT's identified- 30" White Pine, North, 24 feet; 18" White Pine, West, 12 feet.

July 24, 2002: James D. Rein, R.L.S. No. 1234. We recovered a 1 1/4" I.D. iron pipe and two existing BT's, a 40" White Pine, N4°W, 23.90 feet and a 20" Red Pine, West, 12.75 feet. We replaced the iron pipe with a 2.4" O.D. aluminum monument marked as shown and set a white Carsonite type post 0.50 feet south of monument. Additional BT's were made as shown in plan.

(c)(d)(e) PLAN VIEW OF CORNER WITH TIES TO AT LEAST 4 WITNESS MONUMENTS. IF IN DISAGREEMENT WITH PREVIOUSLY ESTABLISHED CORNER, SHOW THE DISTANCE BETWEEN THE TWO CORNERS AND ALSO INDICATE THE TIES TO THE DISPUTED CORNER.



All bearings are magnetic
Scale: 1" = 30'

Note: Distances measurements are to aluminum nails in the side of trees.



Set a 2.4" O.D. x 30" long aluminum monument 20 feet north of shore line extending 6" above ground. Placed a Carsonite type post 0.5 feet south of corner monument.

(i) I, JAMES D. REIN, REGISTERED LAND SURVEYOR NO. S-1234 HEREBY CERTIFY THAT THE CORNER LOCATION ON THIS RECORD WAS DETERMINED BY ME OR UNDER MY DIRECTION AND CONTROL AND THAT THIS U.S. PUBLIC LAND SURVEY MONUMENT RECORD IS CORRECT AND COMPLETE TO THE BEST OF MY KNOWLEDGE AND BELIEF.

SIGNATURE DATE 7/24/02



INDEX NO. M/N-89
3808170200

U.S. PUBLIC LAND SURVEY MONUMENT RECORD

Note: This form is intended and designed to fulfill all requirements of Wisconsin Administrative Code, Chapter A-E 7.08 U.S. Public Land Survey Monument Record (3)(a-i).

(a) CORNER LOCATION
 Meander Cor. of Secs. 16 & 17
 Township 38 North
 Range 8 East of the 4th P.M.
 Town of Newbold
 County of Oneida

WISCRS - Oneida County
 N: 215,420.58 USft
 E: 238,922.64 USft
 Datum: NAD 83(2011) ep. 2010.00
 GNSS Method: RTN - Offset
 GNSS Control: WISCRS VRS

			MC #47

Sec. 17, T. 38 N., R. 8 E.

(b)(f)(g)(h) Description of monument found at this corner and if it was accepted, state all evidence (material, testimonial, occupational, plats, records, other monuments) used as a basis for accepting. If not accepted or if nothing was found, state evidence used as basis for establishing location. If re-established through lost corner proportionate methods, indicate all monuments, distances and directions used to establish. Indicate type of monument and sign post found or set.

This record is a perpetuation of the following land corner document(s):

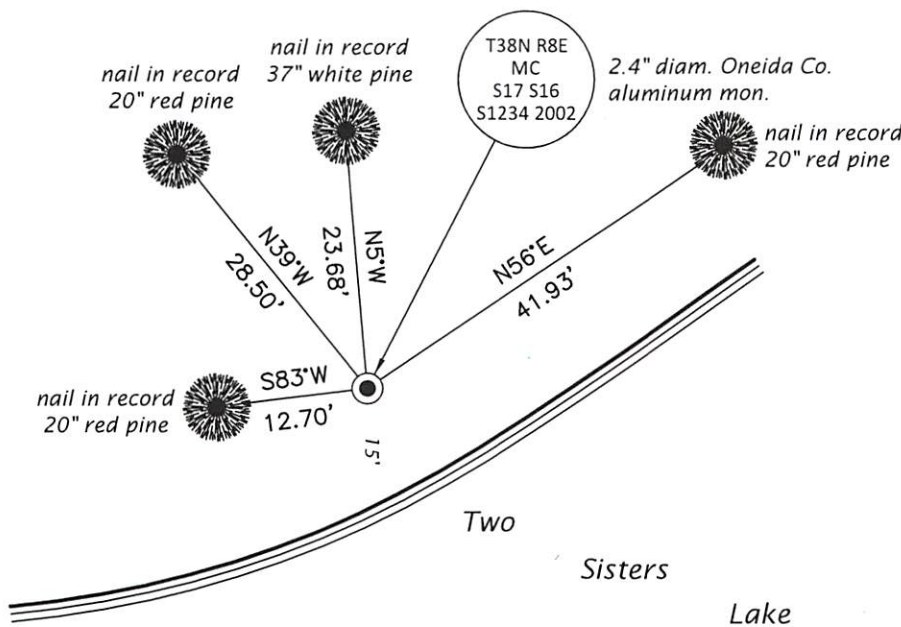
July 24, 2002: USPLS Monument Record by James D. Rein, filed in Oneida County

A complete history of the corner can be found on the previous land corner document(s). I accept the record activity as a true and faithful perpetuation or reestablishment of the original corner location and further perpetuate it as described below.

Feb. 16, 2022: I found and accepted the record monument, a 2.4" diam. aluminum pipe, firmly set, with a 3.3" diam. Oneida Co. aluminum cap projecting 5" above the ground surface. I found or established accessories as indicated below. I found a white vinyl sign post bearing South, 0.6 ft.

The coordinate value shown has been determined by traversing from two or more offset points, the coordinates of which are the result of GNSS observations.

(c)(d)(e) Plan view of corner with ties to at least 4 witness monuments. If in disagreement with previously established corner, show the distances between the two corners and also indicate the ties to the disputed.



REGISTER OF DEEDS OFFICE
 ONEIDA COUNTY
 FILED

MAR 07 2022

KYLE J. FRANSON
 REGISTER OF DEEDS

(i) I, Jeffrey W. Austin, Professional Land Surveyor No. S-1885, hereby certify that the corner location on this record was determined by me or under my direction and control and that this U.S. Public Land Survey Monument Record is correct and complete to the best of my knowledge and belief.

[Handwritten Signature]
 Signature

FEB. 22, 2022
 Date