

FILED
JUL 1 2008

At _____ O'Clock _____ M
THOMAS H. LEIGHTON
REGISTER OF DEEDS

U.S. PUBLIC LAND SURVEY MONUMENT RECORD

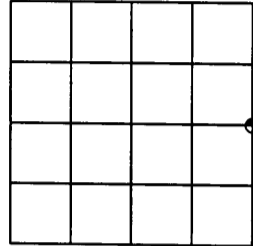
Note: This form is intended and designed to fulfill all requirements of the Wisconsin Administrative Code, Chapter A-E 7.08 U.S. Public Land Monument Record (3)(a)(b)(c)(d)(e)(f)(g)(h)(i). An additional sheet may be added if necessary to conform with said requirements.

(a) CORNER LOCATION:

E1/4 corner of Sec. 17
Township 38 North
Range 8 East
Town of Newbold
County of Oneida

O.C. COORDINATES

North: 217255.1190
East: 238884.4401
Control Station: O.C. 263
Latitude: 45° 46' 30.73533" N
Longitude: 89° 28' 56.62595" W
Datum: Nad 83-91 Method: RTK Direct



SECTION 17

(b) HISTORY OF ORIGINAL CORNER ESTABLISHMENT

Original Surveyor: Alexander Anderson
Date of Survey: Commenced July 10, 1863
Completed July 21, 1863

Original B.T.'S:
Hemlock; N22°W, 8 Links
10" White Pine; N6°E, 8 links

(f)(g)(h) DESCRIPTION OF MONUMENT FOUND AT THIS CORNER AND IF IT WAS ACCEPTED, STATE ALL EVIDENCE (MATERIAL, TESTIMONIAL, OCCUPATIONS, PLATS, RECORDS, OTHER MONUMENTS) USED AS A BASIS FOR ESTABLISHING LOCATION. IF NOT ACCEPTED OF IF NOTHING WAS FOUND, STATE EVIDENCE USED AS BASIS FOR ESTABLISHING LOCATION. IF REESTABLISHED THROUGH LOST CORNER PROPORTIONATE METHODS, INDICATE ALL MONUMENTS, DISTANCES AND DIRECTIONS USED TO ESTABLISH. INDICATE TYPE OF MONUMENT AND SIGN POST FOUND OR SET.

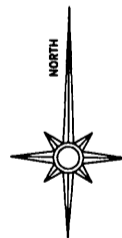
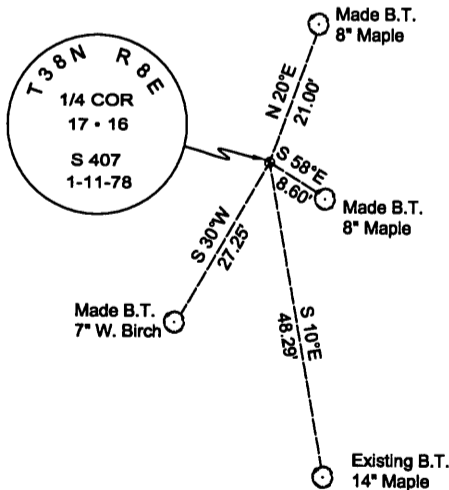
March 14, 1966: field notes by Northwoods Surveyors indicate an existing 1 1/4" iron pipe 1 foot east of swamp. They also set a Tamarack post near corner. A 12" Pine stump badly burned at N6°E, 5.50 feet was recovered. BT set 6" Maple, S9°E, 48.4 feet. Notes also indicate a cut line East & South and blazed line North from corner.

October 7, 1980: Certified Survey Map No. 650, by Herbert Moore, recorded in Oneida County Register of Deeds Office, Volume 3, Page 828, identifies this corner as a brass cap on a 2.5" dia. pipe. Bt's identified - 9" Spruce, West, 16.0 feet; 12" Oak, South, 48.5 feet; 9" Birch, Northeast, 17.8 feet; 9" Spruce, North, 19.8 feet.

July 24, 2002: James D. Rein, R.L.S. No. 1234 - We recovered a 2.5" dia. iron pipe with a brass cap and a 14" Maple BT S10°E, 48.29 feet, which I accept as monumenting the corner. We set a Carsonite type post 1 foot West of monument and made additional BT's as shown in plan.

(c)(d)(e) PLAN VIEW OF CORNER WITH TIES TO AT LEAST 4 WITNESS MONUMENTS. IF IN DISAGREEMENT WITH PREVIOUSLY ESTABLISHED CORNER, SHOW THE DISTANCE BETWEEN THE TWO CORNERS AND ALSO INDICATE THE TIES TO THE DISPUTED CORNER.

Existing 2.5" dia. brass capped iron pipe up 32", 1 foot east of swamp. Set white Carsonite type post 1' west of corner.



All bearings are magnetic.

Scale: 1" = 30'

Note: Distances measurements are to aluminum nails in the side of trees.

(i) I, JAMES D. REIN, REGISTERED LAND SURVEYOR NO. S-1234 HEREBY CERTIFY THAT THE CORNER LOCATION ON THIS RECORD WAS DETERMINED BY ME OR UNDER MY DIRECTION AND CONTROL AND THAT THIS U.S. PUBLIC LAND SURVEY MONUMENT RECORD IS CORRECT AND COMPLETE TO THE BEST OF MY KNOWLEDGE AND BELIEF.

[Handwritten Signature]
SIGNATURE

7/24/02
DATE 3808172000



INDEX NO. L-9