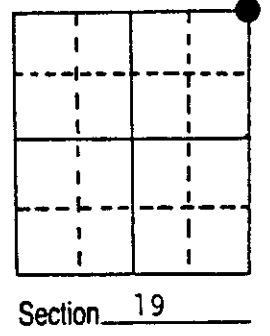


U.S. PUBLIC LAND SURVEY MONUMENT RECORD

Note: This form is intended and designed to fulfill all requirements of Wisconsin Administrative Code, Chapter A-E 5.02, U.S. Public Land Survey Monument Record (3) (a) (b) (c) (d) (e) (f) (g) (h) (i). An additional sheet may be added if necessary to conform with said requirements.

(a) Corner location: Township 38 North
 Range 8 East/West

Town/City/Village NEWBOLD
 County ONEIDA



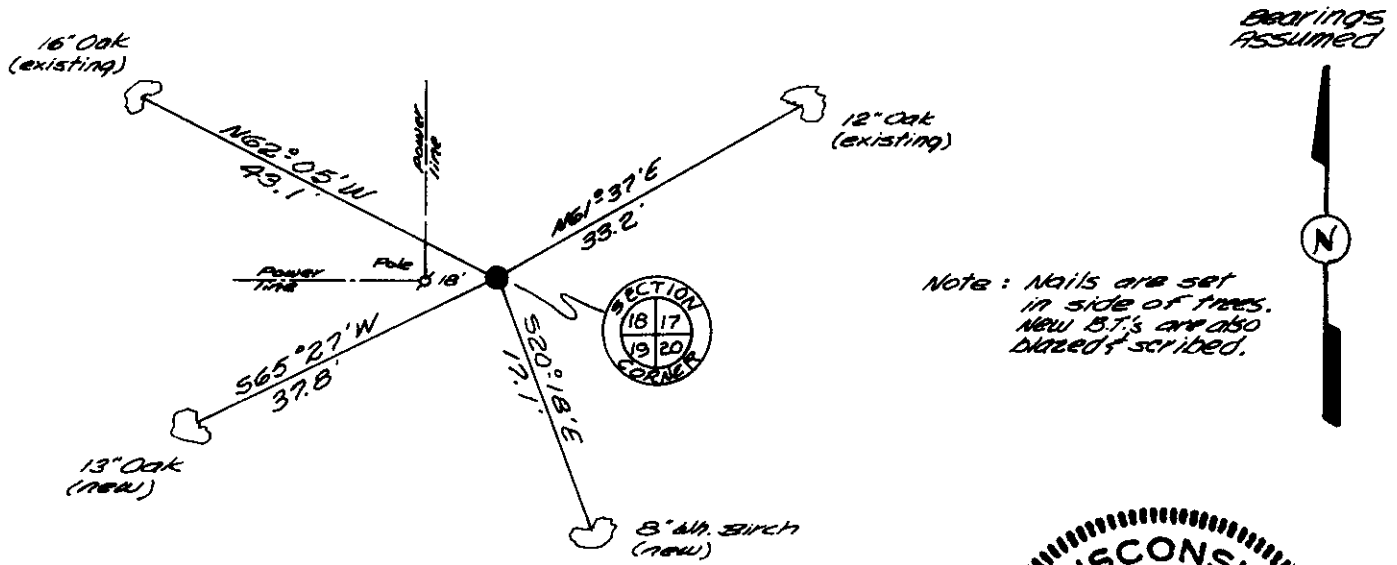
(b) (f) (g) (h) Description of monument found at this corner and if it was accepted, state all evidence (material, testimonial, occupational, plats, records, other monuments) used as a basis for accepting. If not accepted or if nothing was found, state evidence used as basis for establishing location. If reestablished through lost corner proportionate methods, indicate all monuments, distances and directions used to establish.

July, 1863: Alexander Anderson, Deputy Surveyor - Set original section corner.
 Original bearing trees: Sugar 8" N12°E, 41 links - Birch 8" N78°E, 16 links.
 July, 1983: I find a 3" diameter by 18" long iron pipe in place which is in harmonious position with preceding maps and surveys. Corner witnessed by existing 16" Oak N62°W, 43.1 feet, scribe marks visible and by a 12" Oak N61°E, 33.2 feet, scribed SC 32.8

I accept 3" diameter iron pipe as the best evidence of original corner position.

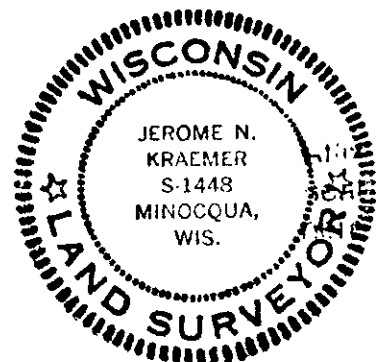
(c) (d) (e) Plan view of corner with ties to at least 4 witness monuments. If in disagreement with previously established corner, show the distances between the two corners and also indicate the ties to the disputed corner.

Replaced found 3" diameter iron pipe with an Oneida County capped 2" diameter and 30" long aluminum pipe protruding 7 inches above ground level on side hill. Cap is stamped to identify corner. Set Cedar Post Northwest 1'.



(i) I, JEROME N. KRAEMER, Reg. Land Surveyor No. S-1448
 (type or print name) certify that the corner location on this record was determined by me or under my direction and control and that this U.S. Public Land Survey Monument Record is correct and complete to the best of my knowledge and belief.

Jerome N. Kraemer Signature September 12th, 1983 Date



Index No. N 53

3808180000