

State of Wisconsin

County of ONEIDA } ss.

FOR U.S. PUBLIC LAND SURVEY MONUMENT RECORD

Index No. R-5

ss.

I William Immich, do hereby certify that on the 15th day of MAY, 1981, I found evidence of the NORTHEAST corner of SECTION 30

Township 38, North, Range 8 EAST, Fourth Principal Meridian,

as described hereon; and that from this evidence I established a new monument and accessories as described hereon to perpetuate the original location of this corner.

Resident witnesses:

History of original corner establishment:
 CORNER SET IN 1860's (1863) Alexander Anderson

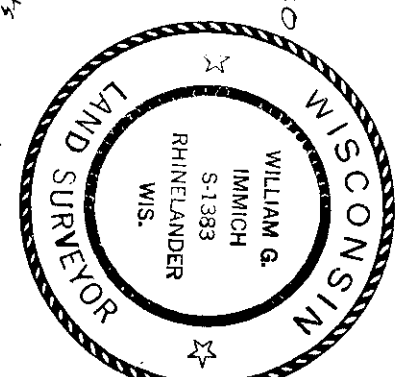
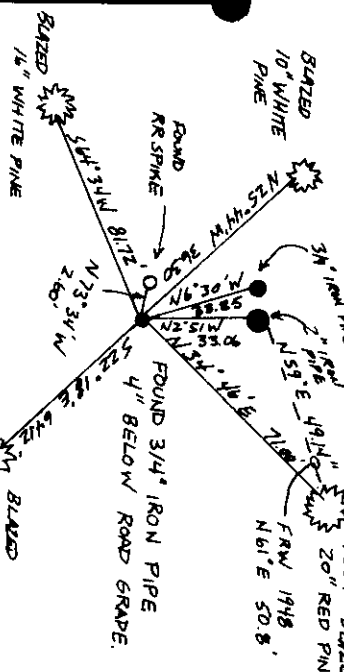
80.00 chain set post to sec 19, 20, 29 + 30
 bts: Maple S N 32 E Zolk
 do S N 67 W Yllk

FOUND NO ORIGINAL EVIDENCE

Description of corner evidence found:

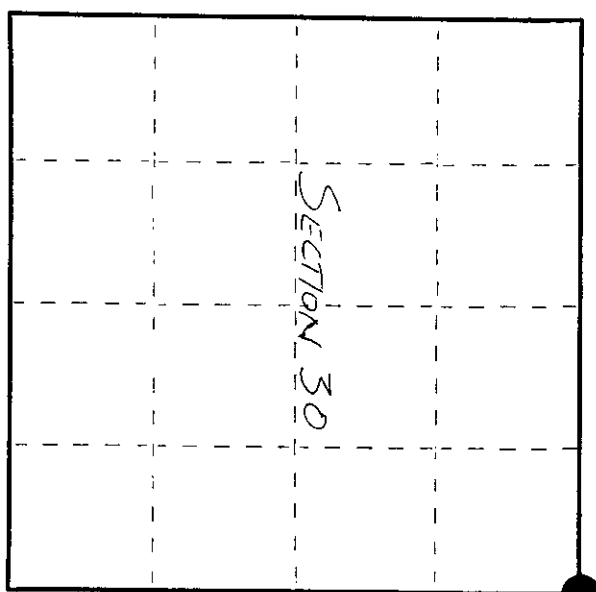
MAY 1906 - DH VAUGHN Set corner from stumps of original bts made new bts w Pine stump 30 N 22 E 73 w Pine stump 30 S 71 E w 22 34
 JUNE 1948 - FR WILKINSON shaws corner identified by Laugh N.E. BT. set witness corner 160' PINE Pine 20 N 61 E 50.8 Birch 8 N 62 W 24
 JUNE 1956 - Robert Bannon calls corner iron pipe in road
 OCT 1962 - Ed McKeown Found iron pipe 33' north of corner
 Dec 1964 - J. Rein Found iron pipe

Description of monument and accessories: I established to perpetuate the original location of this corner.



3808190000

SECTION 30



○ = Corner monument restored.

Dated at Rhineland Wis., this 13th day of DECEMBER, 1983

Signature W. Immich Title REGISTERED LAND SURVEYOR Registration No. 1383
 (County Surveyor, Registered Land Surveyor, or other duly authorized official)

Office of Register of Deeds, County of Oneida I hereby certify that the within instrument was filed in this office for record on the 18th day of January, 1984 at 10:08 o'clock A. M.

Doni Leage Kuehn (Register of Deeds)

By: Robert H. Daniel Deputy Oneida County Surveyor date 18th JAN 1984

Compared with all record data and accepted as correct.

CERTIFIED LAND CORNER RESTORATION

Index No. R-5

History of original corner establishment:

Alexander Anderson Deputy Surveyor 1863
 North between 29 & 30 Var 7°30'
 90.00 set post to Sec. 19, 20, 29&30 maple 8 N 32 E 20
 do 8 N 67 W 41

State of Wisconsin

County of Oneida } ss.

I William Imnich, do hereby certify that on the 15th day of May, 1981, I found evidence of the Northeast corner of Section 30, Township 38, North, Range 8 East, Fourth Principal Meridian, as described hereon; and that from this evidence I established a new monument and accessories as described hereon to perpetuate the original location of this corner.

Resident witnesses:

Description of corner evidence found:
 May 1906 D.H. Vaughn set corner from stumps of original bearing trees
 June 1948 F.R. Wincentsen found Vaughn's corner set witness corner
 June 1956 R. Bandow found iron pipe in road
 October 1962 F.R. Wincentsen shows distance to corner to west
 December 1964 E. McKnown found iron pipe 35' north of corner
 August 1977 J. Rein found 3/4 iron pipe found brass capped I.P. S22E 54.91 found RR Spk.
 N 73 59 W 2.37

Description of monument and accessories I established to perpetuate the original location of this corner.

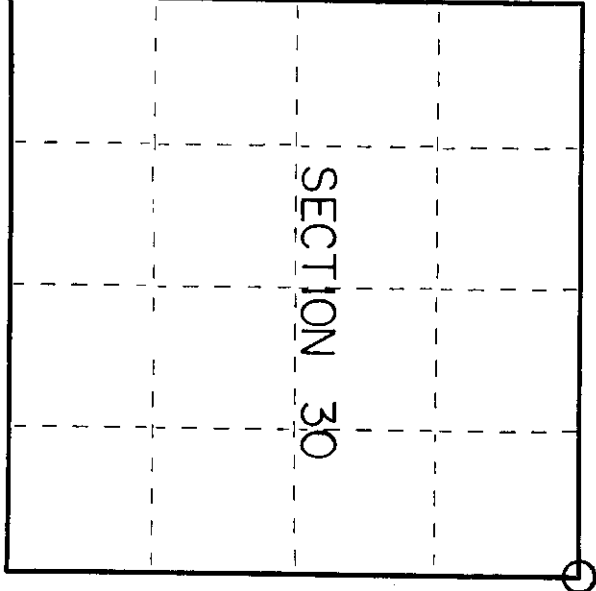
Found 1/4 iron pipe did not remonument 4" below surface
 W. Pine 20" S 22 18 E 64.12 blazed new b t
 W. Pine 16 S 64 34 W 81.72 "
 W. Pine 10 N 25 44 W 36.30 "
 R. Pine 20 N 34 46 E 71.00 found b t
 2" I.P. N 2 51 W 35.06 R. Pine bearing tree for this W.C. by F.R.W.
 3" I.P. N 3 30 W 35.85
 B.C. 2" I.P. S 19 00 E 54.95

Dated at RHINELANDER, Wis., this 15th day of JUNE, 1981.

Signature: William Imnich Title: REGISTERED LAND SURVEYOR Registration No. 1383
 (County Surveyor, Registered Land Surveyor, or other duly authorized official)
 Office of Register of Deeds, County of Oswego, I hereby certify that the within instrument was filed in this office for record on the 15th day of JUNE, 1981 at 100 o'clock P. M.

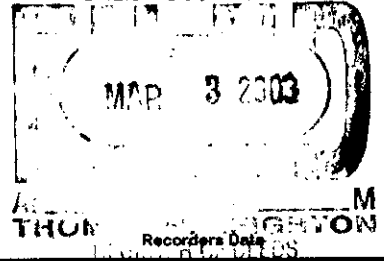
By: Doris Verag Kusner
 (Register of Deeds)

By: Regina Q. B... Deputy



○ = Corner monument restored.

3808190000



This form is intended to fulfill the requirements of Chapter A-E 7.08 (3)(a) thru (i) U.S. Public Land Survey Monument Location Record, Wisconsin Administrative Code. Use the reverse side of form for continuation.

U.S. PUBLIC LAND SURVEY MONUMENT LOCATION RECORD

USPLS CORNER: NW SECTION CORNER SECTION: 29 TOWNSHIP: 38 NORTH RANGE: 8 EAST

NAME OF WATERWAY FOR M.C. CORNER : N/A SECTION LINE: N/A

(CITY)(VILLAGE)(TOWN) OF: NEWBOLD COUNTY OF: ONEIDA

Description of monument found or placed and all other evidence used as the basis for monument location; including monuments and related measurements required if the corner location was reestablished by lost corner proportionate methods. Also indicate name of original surveyor, original survey date and the corner monument, bearing trees, witness or other reference monuments established; including measured bearing and distance ties, from available records.

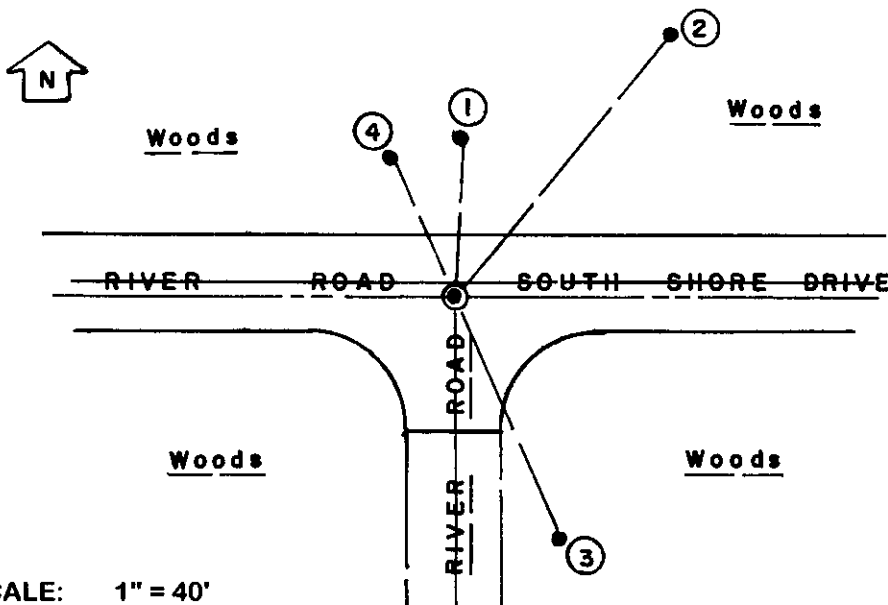
THIS CORNER WAS RE-REFERENCED WITH THE PRIOR VERBAL APPROVAL OF ONEIDA COUNTY SURVEYOR MICHAEL J. ROMPORTL, AS REMAINING REFERENCES CONSIDERED INADEQUATE FOR FUTURE RECOVERY PURPOSES AND TO FACILITATE MARKING OF CORNER FOR TRAVERSE SOUTH TO REESTABLISH WEST 1/4 CORNER OF SECTION 29.

This corner last referenced for record by William G. Immich/RLS 1383 per Certified Land Corner Restoration Certificate filed June 11, 1986 in Oneida County records, which should be referred to for historical documentation. Record 10" Pw BT NW is now dead; record 20" Pr NE is now a 24" Pr with no visible markings but used for new ties; record 2" iron pipe North found flush and used for new ties; record 3/4" iron pipe found 1" up N01°W 33.91'(33.85'); record 2" iron pipe with 2.5" dia. stamped brass cap found disturbed and tipped 30°+- South, which I replumbed and secured for new ties.

Using record ties from open lower face blazes of old Pw BT S69°W 81.72' and Pw BT S16°E 64.12', I set a 1/2" dia. by 4.5" long tapered stainless steel pin with geared top flush at corner location in existing blacktop pavement, which fell directly above a strong MLR detection below the roadway, undoubtedly being the iron pipe per 1986 location record by Immich; therefore, I did not excavate thru the black top to the highly probable iron pipe as record ties to old SE & SW BT faces considered best locational evidence, due to tendency of iron pipe monuments to be unstable from frost action and roadway traffic pressures. I painted a blaze orange cross and SC onto blacktop at the corner pin set.

This recovery completed October 1, 2002; there were no direct witnesses other than vehicle drive-bys.

Plan view map of monument location with bearing and distance ties to a minimum of four(4) described witness or reference monuments of concrete, natural stone, iron, live bearing trees or equivalent material. If applicable, also show a minimum of two(2) bearing and distance ties to any other monument found and not accepted; including the bearing and distance from the accepted monument.



WITNESS MONUMENT TIES:

- ① Old 2" dia. uncapped iron pipe found flush N03°E 33.10'.
- ② Old 24" Pr BT N41°E 71.11'.
- ③ Record 2" dia. iron pipe with stamped brass cap S24°E 54.87'.
- ④ 5/8" dia. by 24" long rebar set with yellow poly RM cap 1" up N24°W 31.95'.

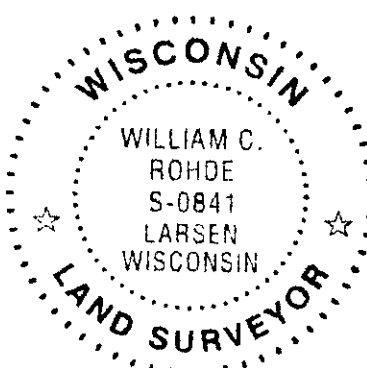
Also measured ties to lower face of old record BTs SE and SW noted above. I painted blazes blaze orange & nailed a standard BT sign to upper face.

I set a standard white poly 'T' marker post 27' North of the corner.

SCALE: 1" = 40'

Unless otherwise indicated, all bearing tree ties are to a .25" dia. by 2.5" long PK nail with a 1.25" dia. steel washer driven into unblazed right face and a .25" dia. by 2.5" long PK nail with a 2" dia. steel washer stamped BT is also driven into unblazed face of bearing tree at DBH; the basis for measured bearings is by compass to nearest degree and all tie distances are measured horizontal by steel tape corrected to nearest 1/100th feet at standard temperature of 68° F.

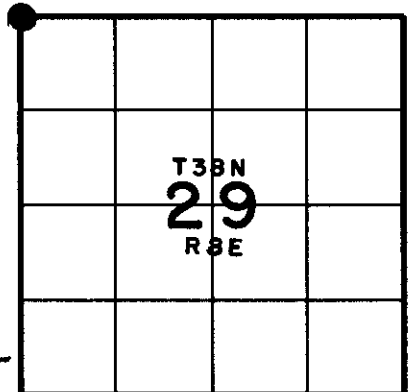
RLS SEAL:



LAND SURVEYOR CERTIFICATE:

I, William C. Rohde, hereby certify that I am duly licensed as a Professional Land Surveyor in the State of Wisconsin; that this USPLS monument location was determined by me and/or under my direct supervision and control; and that this U.S. Public Land Survey Monument Location Record is true and correct to the best of my knowledge and belief.

Signed: *William C. Rohde*
William C. Rohde RLS 841



SECTION LOCATION MAP
INDEX NO. R 5