

CERTIFIED LAND CORNER RESTORATION

State of Wisconsin }  
County of Oneida } ss.

I William E. Badow, do hereby certify that on the 2 day of November, 1981, I found evidence of the East 1/4 corner of Section 19 Township 38 North, Range 8 East, Fourth Principal Meridian, as described hereon; and that from this evidence I established a new monument and accessories as described hereon to perpetuate the original location of this corner:

Description of original monument and accessories and subsequent restorations:

- 1863 Alexander Anderson set org. cor. B.T.s Spruce 7 N 26 W 16lks.; Aspen 9 S 6° E 21lks.
- May 1906 D.H. Vaughan reset cor. from org. west B.T.
- Nov. 1921 Lynn Vaughan measured from S 1/8 cor. to E. 1/4 checked with D.H. Vaughan's dist.; iron pin & B.T.s Hemlock 12 N 48 1/2 W 59lks.; Oak 7 S 60 E 451l
- 1932 H.C. Hall at cor. fd. Lynn Vaughan's B.T.s
- July 1959 J.C. Kirby fd. iron pin & L.V.'s B.T.s

Description of corner evidence found:

- fd. iron bar with Lynn Vaughan's B.T.s in place

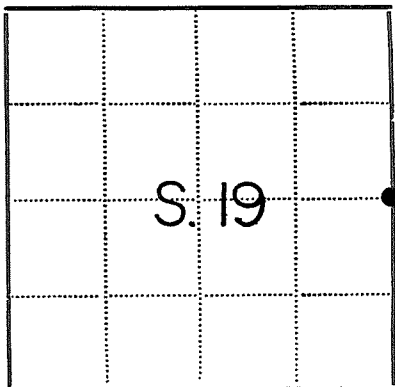
Description of monument and accessories I established to perpetuate the location of this corner:

- iron bar in good condition made a new B.T.
- W. Birch 10" N 75 E 28.15'

Compared with all record data and accepted as correct.



Oneida County Surveyor date



- - Corner monument restored
- -

Resident witnesses.....

Dated at Rhinelander Wisconsin, this 5<sup>th</sup> day of November 1981.

Signature *William E. Badow* Title Reg. Land Surveyor  
(County Surveyor, Registered Land Surveyor, or other duly authorized official)

Surveyors Registration No. 5-1182

Office of..... County of.....

I hereby certify that the within instrument was filed in this office for record on the..... day of..... 19....., and was filed in Book No..... Page No..... of County Records.

Signature..... Title.....

Township....., Range....., Section....., Index No....., Page No.....

2509192000

P.S

**U.S. PUBLIC LAND SURVEY MONUMENT RECORD**

SEP 28 2017

Note: This form is intended and designed to fulfill all requirements of the Wisconsin Administrative Code, Chapter A-E 7.08 U.S. Public Land Monument Record (3)(a)(b)(c)(d)(e)(f)(g)(h)(i). An additional sheet may be added if necessary to conform with said requirements.

AT            O'CLOCK            M  
KYLE J. FRANSON  
REGISTER OF DEEDS

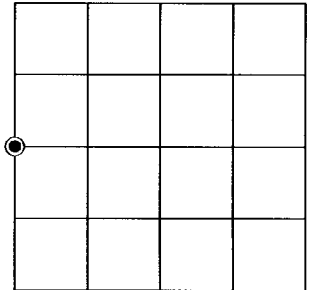
(a) CORNER LOCATION:

West Quarter Corner of Section 20  
Township 38 North  
Range 8 East  
Town of Newbold  
County of Oneida County

North:  
East:  
Datum:  
GNSS Method:  
GNSS Control:

( RECORDING AREA)

SECTION 20



(b) HISTORY OF ORIGINAL CORNER ESTABLISHMENT

Original Surveyor:  
Date of Survey: Commenced  
Completed  
Original B.T.'S

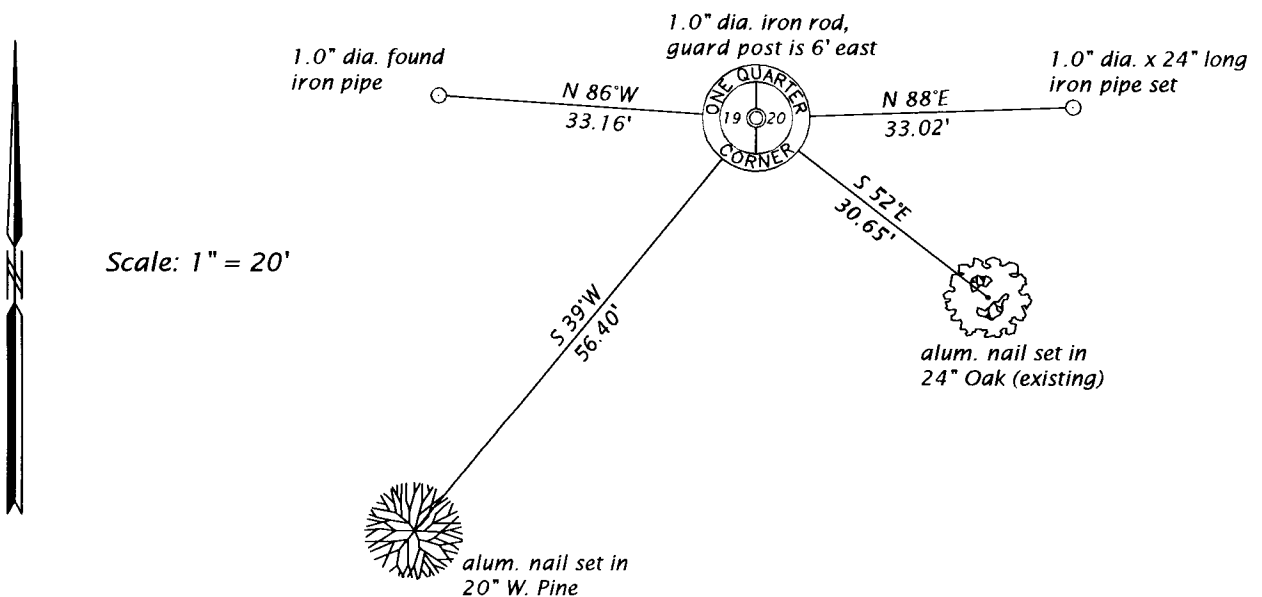
*SEE PREVIOUS U.S.P.L.S. MONUMENT  
RECORD DATED NOVEMBER 5, 1981.*

(f)(g)(h) DESCRIPTION OF MONUMENT FOUND AT THIS CORNER AND IF IT WAS ACCEPTED, STATE ALL EVIDENCE (MATERIAL, TESTIMONIAL, OCCUPATIONAL, PLATS, RECORD, OTHER MONUMENTS) USED AS A BASIS FOR ESTABLISHING LOCATION. IF NOT ACCEPTED OR IF NOTHING WAS FOUND, STATE EVIDENCE USED AS BASIS FOR ESTABLISHING LOCATION. IF REESTABLISHED THROUGH LOST CORNER PROPORTIONATE METHODS, INDICATE ALL MONUMENTS, DISTANCES AND DIRECTIONS USED TO ESTABLISH. INDICATE TYPE OF MONUMENT AND SIGN POST FOUND OR SET.

This is a perpetuation of a previous USPLS Monument Record by William E. Bandow, RLS, dated November 5, 1981, and filed in the office of the Oneida County Register of Deeds. A complete history of the corner can be found on the previous monument record. I accept the previous location as a true and faithful perpetuation or reestablishment of the original corner location and further perpetuate it as follows.

August 15, 2017, James D. Rein, PLS No. S-1234, recovered and accepted the 1.0" dia. iron rod as described by Bandow - see below for updated references.

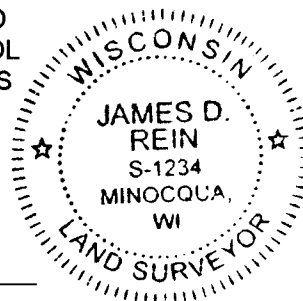
(c)(d)(e) PLAN VIEW OF CORNER WITH TIES TO AT LEAST 4 WITNESS MONUMENTS. IF IN DISAGREEMENT WITH PREVIOUSLY ESTABLISHED CORNER, SHOW THE DISTANCE BETWEEN THE TWO CORNERS AND ALSO INDICATE THE TIES TO THE DISPUTED CORNER.



(i) I, JAMES D. REIN, PROFESSIONAL LAND SURVEYOR NO. S-1234 HEREBY CERTIFY THAT THE CORNER LOCATION ON THIS RECORD WAS DETERMINED BY ME OR UNDER MY DIRECTION AND CONTROL AND THAT THIS U.S. PUBLIC LAND SURVEY MONUMENT RECORD IS CORRECT AND COMPLETE TO THE BEST OF MY KNOWLEDGE AND BELIEF.

*[Handwritten Signature]*  
SIGNATURE

8-31-17  
DATE



INDEX NO. P-5  
3808192000

U.S. PUBLIC LAND SURVEY MONUMENT RECORD ADDENDUM

Note: This form is intended and designed to fulfill all requirements of the Wisconsin Administrative Code, Chapter A-E 7.08 U.S. Public Land Monument Record (3)(a)(b)(c)(d)(e)(f)(g)(h)(i). An additional sheet may be added if necessary to conform with said requirements.

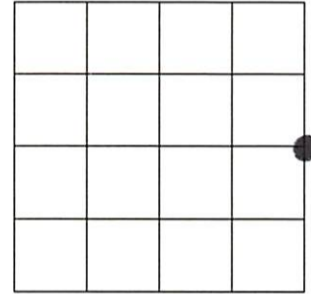
(a) CORNER LOCATION:

East Corner of Section 19  
Township 38 North  
Range 8 East  
Town of Newbold  
County of Oneida

North:  
East:  
Datum:  
GNSS Method:  
GNSS Control:

(RECORDING AREA)

SECTION 19



(b) HISTORY OF ORIGINAL CORNER ESTABLISHMENT

Original Surveyor:  
Date of Survey: Commenced  
Completed  
Original B.T.'S

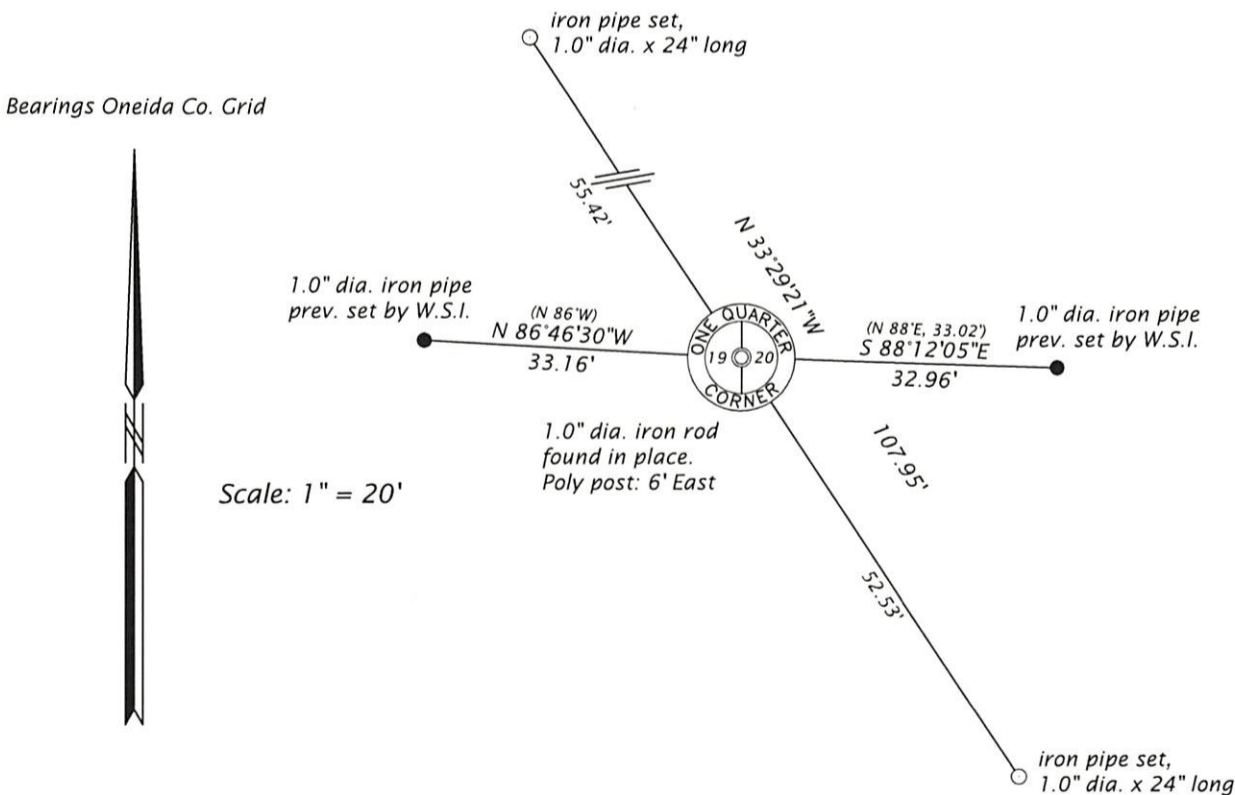
SEE PREVIOUS U.S.P.L.S. MONUMENT  
RECORD DATED AUGUST 31, 2017

(f)(g)(h) DESCRIPTION OF MONUMENT FOUND AT THIS CORNER AND IF IT WAS ACCEPTED, STATE ALL EVIDENCE (MATERIAL, TESTIMONIAL, OCCUPATIONAL, PLATS, RECORD, OTHER MONUMENTS) USED AS A BASIS FOR ESTABLISHING LOCATION. IF NOT ACCEPTED OR IF NOTHING WAS FOUND, STATE EVIDENCE USED AS BASIS FOR ESTABLISHING LOCATION. IF REESTABLISHED THROUGH LOST CORNER PROPORTIONATE METHODS, INDICATE ALL MONUMENTS, DISTANCES AND DIRECTIONS USED TO ESTABLISH. INDICATE TYPE OF MONUMENT AND SIGN POST FOUND OR SET.

This is a perpetuation of a previous U.S.P.L.S. Monument Record by James D. Rein, PLS, dated August 31, 2017, and filed in the office of the Oneida County Register of Deeds. A complete history of the corner can be found on the previous monument record. I accept the previous location as a true and faithful perpetuation or reestablishment of the original corner location and further perpetuate it as follows.

June 2, 2025 - James D. Rein, P.L.S. No. S-1234. We found, and I accepted, the 1.0" dia. iron rod as described by William E. Bandow on the previous Monument Record dated November 5, 1981. The two previous bearing trees are now gone. See below for updated references.

(c)(d)(e) PLAN VIEW OF CORNER WITH TIES TO AT LEAST 4 WITNESS MONUMENTS. IF IN DISAGREEMENT WITH PREVIOUSLY ESTABLISHED CORNER, SHOW THE DISTANCE BETWEEN THE TWO CORNERS AND ALSO INDICATE THE TIES TO THE DISPUTED CORNER.



(i) I, JAMES D. REIN, PROFESSIONAL LAND SURVEYOR NO. S-1234 HEREBY CERTIFY THAT THE CORNER LOCATION ON THIS RECORD WAS DETERMINED BY ME OR UNDER MY DIRECTION AND CONTROL AND THAT THIS U.S. PUBLIC LAND SURVEY MONUMENT RECORD IS CORRECT AND COMPLETE TO THE BEST OF MY KNOWLEDGE AND BELIEF.

*James D. Rein*  
SIGNATURE

12/06/25  
DATE



INDEX NO. P - 5  
3808192000