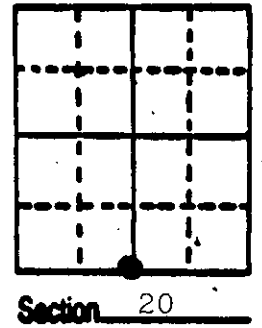
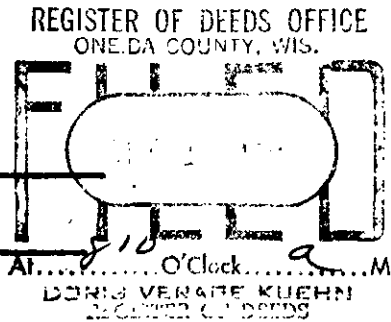


U.S. PUBLIC LAND SURVEY MONUMENT RECORD

Note: This form is intended and designed to fulfill all requirements of Wisconsin Administrative Code, Chapter A-E 5.02, U.S. Public Land Survey Monument Record (3) (a) (b) (c) (d) (e) (f) (g) (h) (i). An additional sheet may be added if necessary to conform with said requirements.

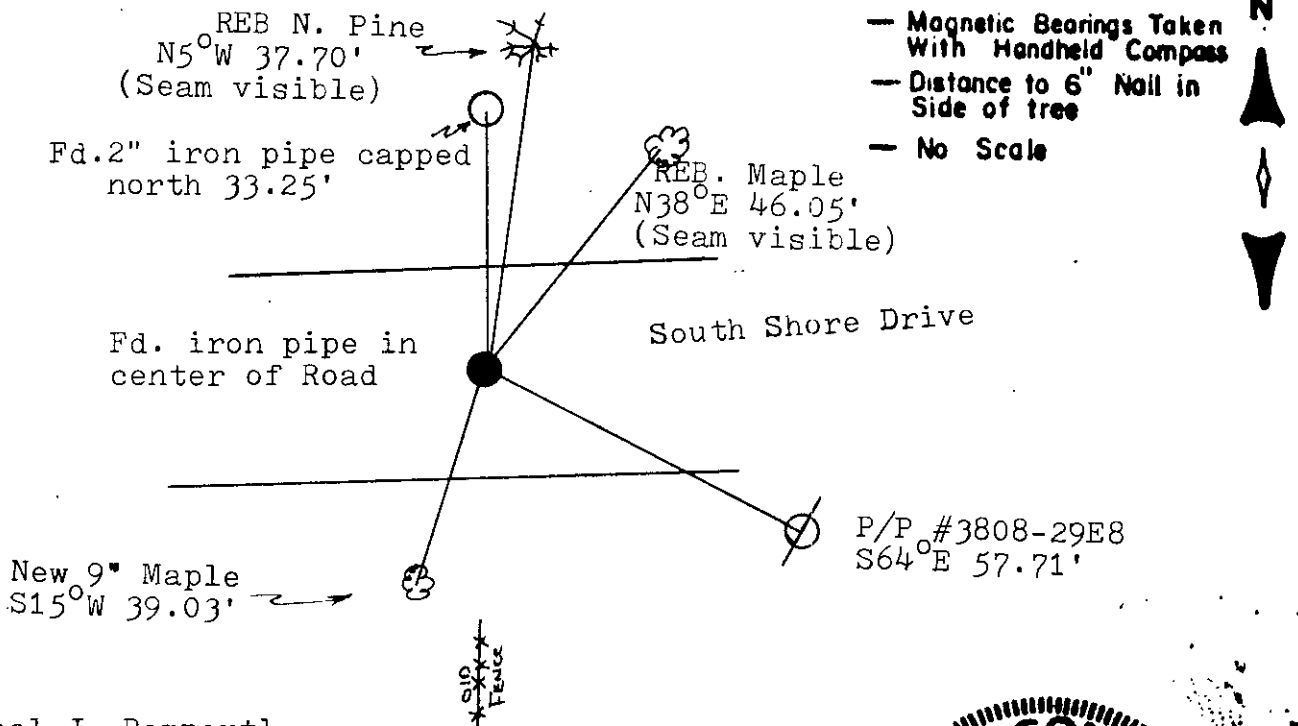
(a) Corner location: Township 38 North
 Range 8 East/West
 Town/City/Village Newbold
 County Oneida



(b) (f) (g) (h) Description of monument found at this corner and if it was accepted, state all evidence (material, testimonial, occupational, plats, records, other monuments) used as a basis for accepting. If not accepted or if nothing was found, state evidence used as basis for establishing location. If reestablished through lost corner proportionate methods, indicate all monuments, distances and directions used to establish.

- 1863 Alexander Anderson established original corner at 40.00 ch. B.T.s Hem. 10 N 64½ W 27; Birch N 43 E 18.
- 1910 D.H. Vaughan states: "East from NW cor. 40.06 found post set by allen from orig. B.T.s also found stumps or orig. B.T.s. New bearings to allens witnesses. W.P. stp. 26 S 79 W 22; W.P. stp. 26 S 22½ E 7 3/4.
- 1956 R.E. Badow indicates an iron pipe in center of road. B.T.s N. Pine 10 N 9-30 W 37.7; Maple 6" N 38° E 45.3'
- 1977 J Rien found 5/8" iron pipe in road and 18" N. Pine N 4° W 37.7.
- 1986 I recovered the iron pipe in the road and witnessed it as shown below.

(c) (d) (e) Plan view of corner with ties to at least 4 witness monuments. If in disagreement with previously established corner, show the distances between the two corners and also indicate the ties to the disputed corner.



P/P #3808-29E8
 S64° E 57.71'

(i) I, Michael J. Romportl
 (type or print name) certify that the corner location on this record was determined by me or under my direction and control and that this U.S. Public Land Survey Monument Record is correct and complete to the best of my knowledge and belief.

Michael J. Romportl Signature
December 12, 1987 Date
 GENISOT & ASSOCIATES INC.
 1512 EAGLE ST., RHINELANDER, WIS.



Index No. R-7

3808200020