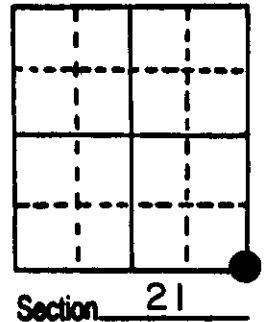


U.S. PUBLIC LAND SURVEY MONUMENT RECORD

Note: This form is intended and designed to fulfill all requirements of Wisconsin Administrative Code, Chapter A-E 5.02, U.S. Public Land Survey Monument Record (3) (a) (b) (c) (d) (e) (f) (g) (h) (i). An additional sheet may be added if necessary to conform with said requirements.

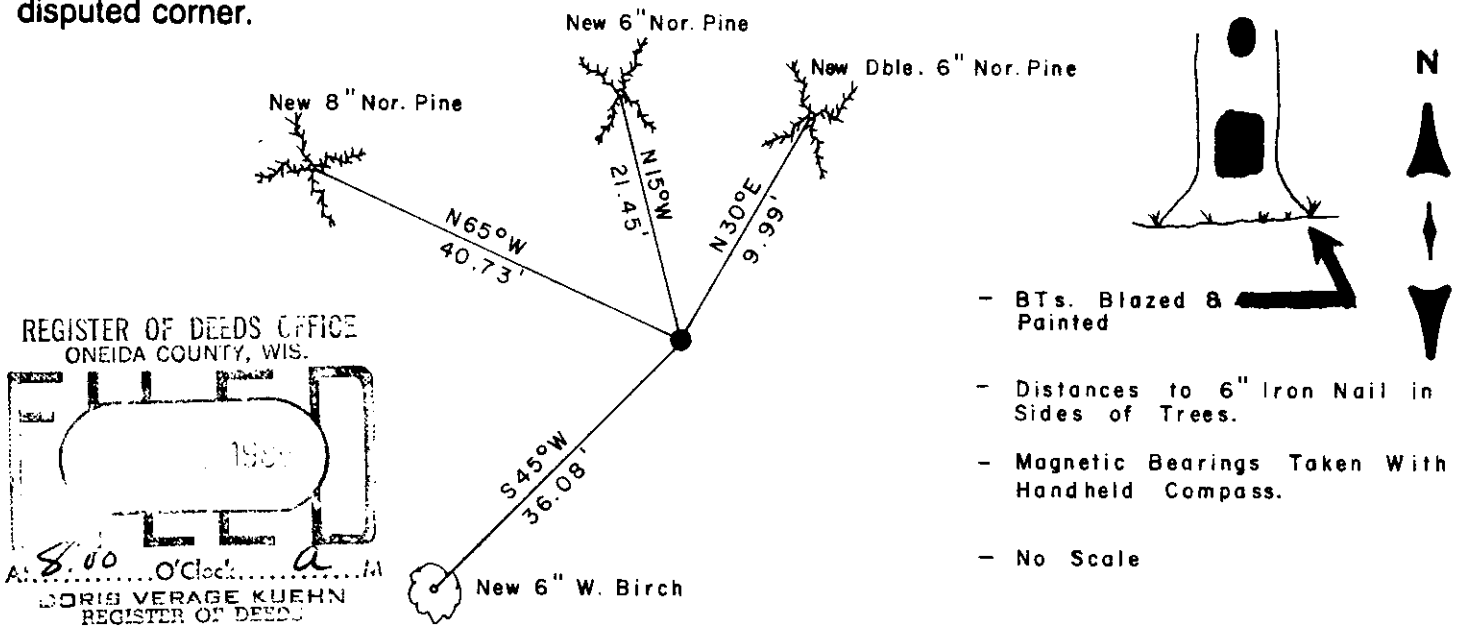
(a) Corner location: Township 38 North
 Range 8 East/West
 Town/City/Village Newbold
 County Oneida



(b) (f) (g) (h) Description of monument found at this corner and if it was accepted, state all evidence (material, testimonial, occupational, plats, records, other monuments) used as a basis for accepting. If not accepted or if nothing was found, state evidence used as basis for establishing location. If reestablished through lost corner proportionate methods, indicate all monuments, distances and directions used to establish.

- 1863 - Alexander Anderson set original corner between Sec. 27 & Sec. 28, North between Sec's, 27 & 28 80.00 set post. BTs; Aspen 12, N 40° W, 23, Aspen 12, N 57° E, 25.
- 1933- Hall set 2" iron pipe with brass cap at fence corner, by local test.
- 1986- I found Halls 2" iron pipe with brass cap witnessed it as shown below.

(c) (d) (e) Plan view of corner with ties to at least 4 witness monuments. If in disagreement with previously established corner, show the distances between the two corners and also indicate the ties to the disputed corner.



REGISTER OF DEEDS OFFICE
 ONEIDA COUNTY, WIS.
 1986
 8:00 O'Clock
 DORIS VERAGE KUEHN
 REGISTER OF DEEDS

(i) I, WILLIAM E. BANDOW R.L.S. 1182
 (type or print name) certify that the corner location on this record was determined by me or under my direction and control and that this U.S. Public Land Survey Monument Record is correct and complete to the best of my knowledge and belief.

William E. Bandow 10-3-86
 Signature Date

GENISOT & ASSOCIATES INC.
 1512 EAGLE ST., RHINE, WI.



Index No. R-13

3808210000