

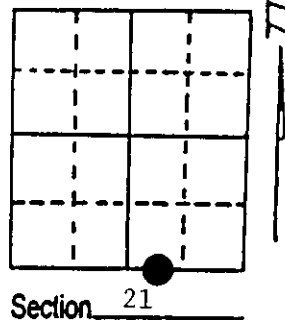
U.S. PUBLIC LAND SURVEY MONUMENT RECORD

Note: This form is intended and designed to fulfill all requirements of Wisconsin Administrative Code, Chapter A-E 7.08 U.S. Public Land Survey Monument Record (3) (a) (b) (c) (d) (e) (f) (g) (h) (i). An additional sheet may be added if necessary to conform with said requirements.

(a) Corner location: Township 38 North
 Range 8 East/West

Town/City/Village Newbold

County Oneida



(b) (f) (g) (h) Description of monument found at this corner and if it was accepted, state all evidence (material, testimonial, occupational, plats, records, other monuments) used as a basis for accepting. If not accepted or if nothing was found, state evidence used as basis for establishing location. If reestablished through lost corner proportionate methods, indicate all monuments, distances and directions used to establish. Indicate type of monument found or set and sign post.

1863 - Alexander Anderson established this corner at 34.80 chains on west shore of lake and set wood post/BTs:

7" Tamarack, N52°W, 35 Links 6" Tamarack, S21°E, 20 Links

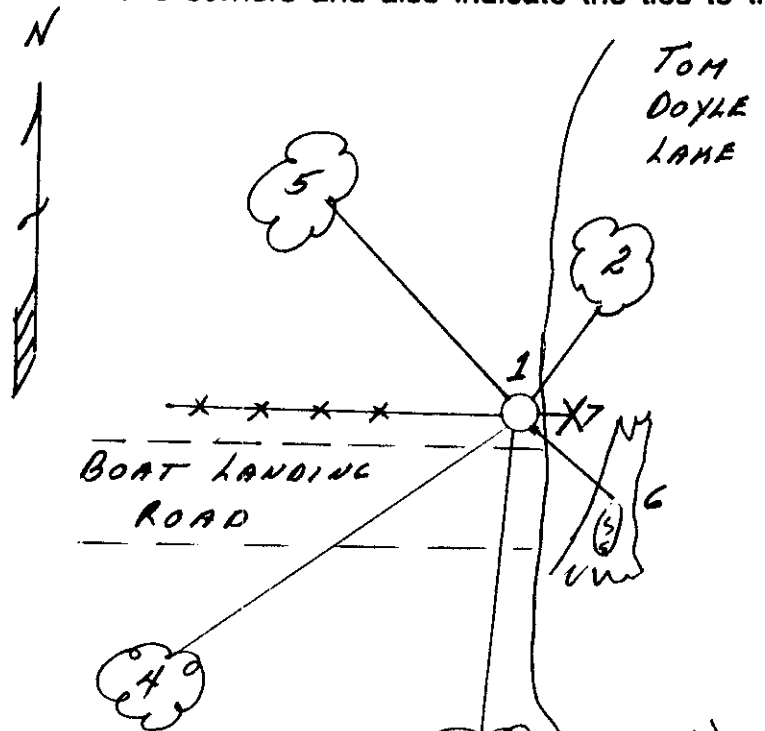
5/29/1913 - D. H. Vaughan found south BT okay and stump of north original BT. He made new BT; 8" Tamarack, S81½°E, 18 1/4 links.

10/11/1991 - Milo E. Stefan found scribed post at end of old fence line and lake shore with 10" Tamarack snag 5' high and scribing nearly weathered away, S82°E, 11.5'. We set new aluminum monument in place of post and made new BTs and set plastic sign post.

(c) (d) (e) Plan view of corner with ties to at least 4 witness monuments. If in disagreement with previously established corner, show the distances between the two corners and also indicate the ties to the disputed corner.

- 1) 1" x 6" aluminum monument
- 2) 10" Tamarack, N48°E, 6.18'
- 3) 16" White Pine, S6°W, 54.22'
- 4) 12" Tamarack, S48°W, 70.55'
- 5) 10" Tamarack, N30°W, 21.15'
- 6) 10" Tamarack, snag, S82°E, 11.5'
- 7) Plastic sign post, East, 1.0'

Distances to nail in side of BTs.
 BTs scribed "BT" in stump blaze.



(i) I, Milo E. Stefan
 (type or print name) certify that the corner location on this record was determined by me or under my direction and control and that this U.S. Public Land Survey Monument Record is correct and complete to the best of my knowledge and belief.

Milo E. Stefan
 Signature

October 14, 1991
 Date



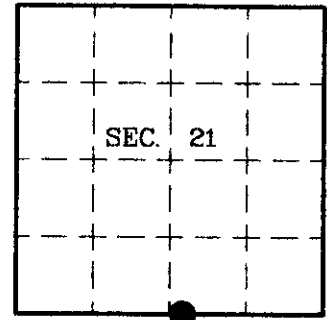
Stamp 3808210015

Index No. R-11, 12
 3808210015

U.S. PUBLIC LAND SURVEY MONUMENT RECORD

Note: This form is intended and designed to fulfill all requirements of Wisconsin Administrative Code, Chapter A-E 7.08 U.S. Public Land Survey Monument Record (3)(a)(b)(c)(d)(e)(f)(g)(h)(i). An additional sheet may be added if necessary to conform with said requirements.

(a) CORNER LOCATION: State Plane Coordinates
 Meander Corner of Section 21 X
 Township 38 North Y
 Range 8 East Datum Base
 Town of Newbold County of Oneida



(b) HISTORY OF ORIGINAL CORNER ESTABLISHMENT

Original Surveyor: Alexander Anderson
 Date of Survey: Commenced 1863
 Completed 1863

Original B.T.s

Tamarack 7 N52°W 35 lks.
 Tamarack 6 S21°E 20 lks.

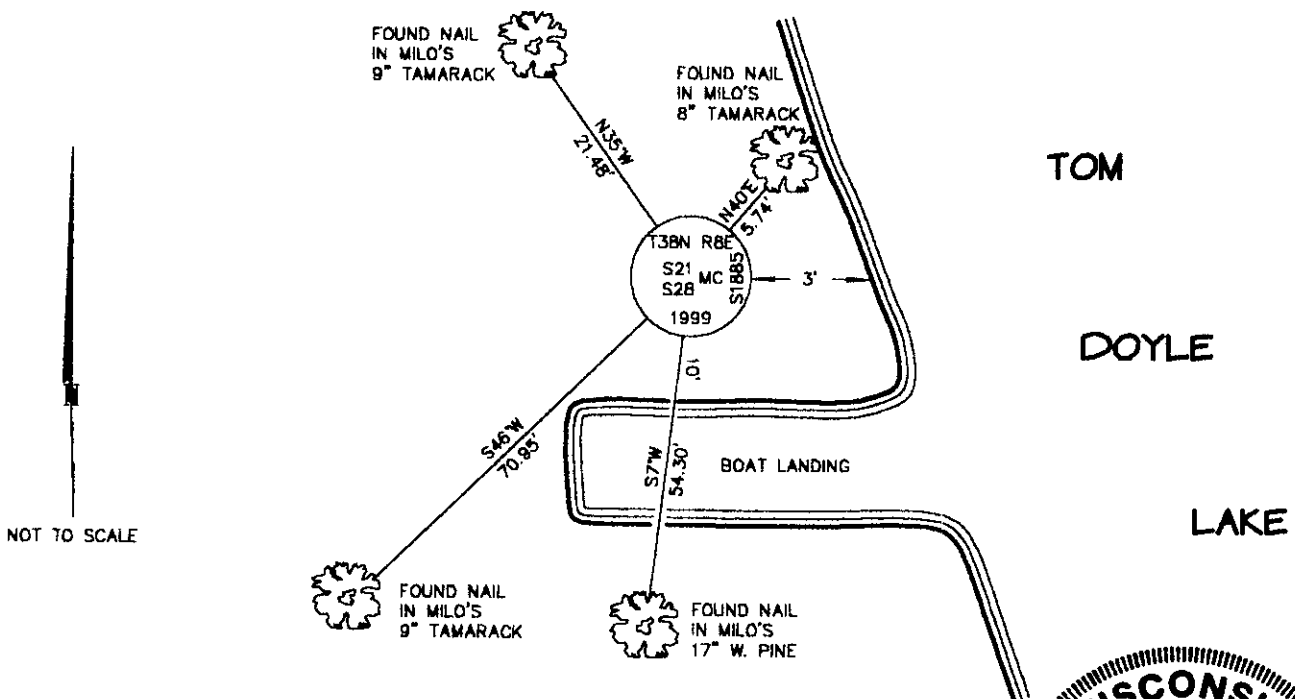
(b)(f)(g)(h) Description of monument found at this corner and if it was accepted, state all evidence (material, testimonial, occupational, plats, records, other monuments) used as a basis for accepting. If not accepted or if nothing was found, state evidence used as basis for establishing location. If reestablished through lost corner proportionate methods, indicate all monuments, distances and directions used to establish. Indicate type of monument and sign post found or set.

This corner was previously restored by Milo E. Stefan, Registered Land Surveyor #S-1558 on October 14, 1991. The complete history of this corner can be found on his U.S. Public Land Survey Monument Record.

June 12, 1969: The plat of "DAVEDED SHORES" by John H. Fisher indicates this corner is marked with a 1-1/2" dia. iron pipe and witnessed by an 11' Tamarack stump S58°E, 10.0 feet and an 8" Tamarack N58°E, 5.3 feet.

September 7, 1999: I found no evidence of Milo's aluminum monument or guard post. I did find and accept a 1-1/2" dia. iron pipe that I believe Milo overlooked when he restored this corner. I believe it to be the meander corner described on the plat by Fisher. I replaced the pipe with a 2-1/2" dia., 60" long aluminum pipe with 3-1/4" dia. Oneida Co. aluminum cap 6" above the ground and marked as shown below. I established accessories as shown below and set a plastic sign post Southwest, 1 foot.

(c)(d)(e) Plan view of corner with ties to at least 4 witness monuments. If in disagreement with previously established corner, show the distances between the two corners and also indicate the ties to the disputed.



(i) I, Jeffrey W. Austin, Registered Land Surveyor S-1885, hereby certify that the corner location on this record was determined by me or under my direction and control and that this U.S. Public Land Survey Monument Record is correct and complete to the best of my knowledge and belief.

Signature _____

Date _____



INDEX NO. R-1112

3808210019