

CERTIFIED LAND CORNER RESTORATION FOR U. S. PUBLIC LAND SURVEY MONUMENT RECORD

State of Wisconsin } ss. County of ONEIDA

I Michael J. Romportl, do hereby certify that on the 11th day of January, 1983, I found evidence of the Meander Cor. on N. side T.D. corner of Section 21 Township 38 North, Range 8 East, Fourth Principal Meridian, as described hereon; and that from this evidence I established a new monument and accessories as described hereon to perpetuate the original location of this corner:

Description of original monument and accessories and subsequent restorations:

- July 14, 1863, Alexander Anderson North between 21 & 22 Var. 6°30'E 22.17 intersect lake; 31.50 over lake; 40.00 Set 1/4 post orig, L.T. for M.C. @ 31.50 Y pine 14 N54W 36, Y pine 16 N26E 33
- Dec. 1902 D.H. Vaughan went to S.W. cor. (Sec. 22) identified by orig L.T. .... set new post & run north Var. 4°E 14.60 intersect lake; 30.02 over lake & 1.01 E. of meander, set new post from the N.W. orig. L.T., a stump now.
- June 1910 ..... as W 1/4 post Sec.22 is gone I began at M.C. on N. side of lake & run N Var. 4 1/2° E 35.70 fell 34 1/2' W of M.C. on S. side of small lake. Fd. a shortage of 7lks. went S. & set 1/4 P. by proportional measure at 848 1/2' N. of M.C.
Description of corner evidence found: cont. on back
- I found H.C, Hall's W.C. brass cap and the 1/4 corner 546.65' to the north and also found a pine stump scribed L.T.

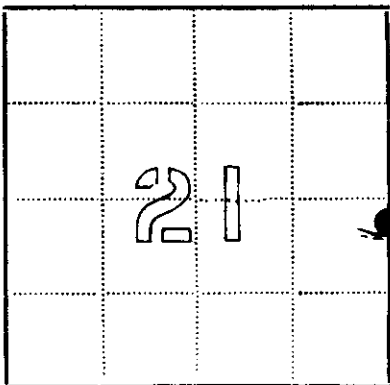
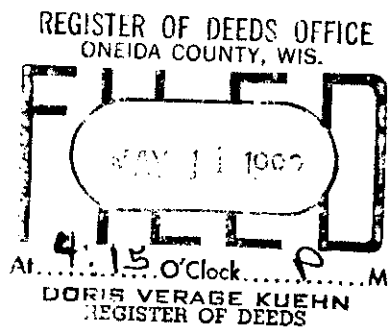
Description of monument and accessories I established to perpetuate the location of this corner:

- As this corner falls in lake I did not place a monument at the orig. position
- See diagram on back for witnesses

Compared with all record data & accepted as correct.

[Signature]

Oneida County Surveyor 27 Apr 1983



● - Corner monument restored
□ -

Resident witnesses.....

Dated at Rhinelander Wisconsin, this 1st day of February 1983.

Signature Michael J. Romportl Title W.R.L.S. (County Surveyor, Registered Land Surveyor, or other duly authorized official)

Surveyors Registration No. 1624

Office of..... County of.....

I hereby certify that the within instrument was filed in this office for record on the..... day of..... 19....., and was filed in Book No..... Page No..... of County Records.

Signature..... Title.....

Township 38 North, Range 8 East, Section 21, Index No., Page No.

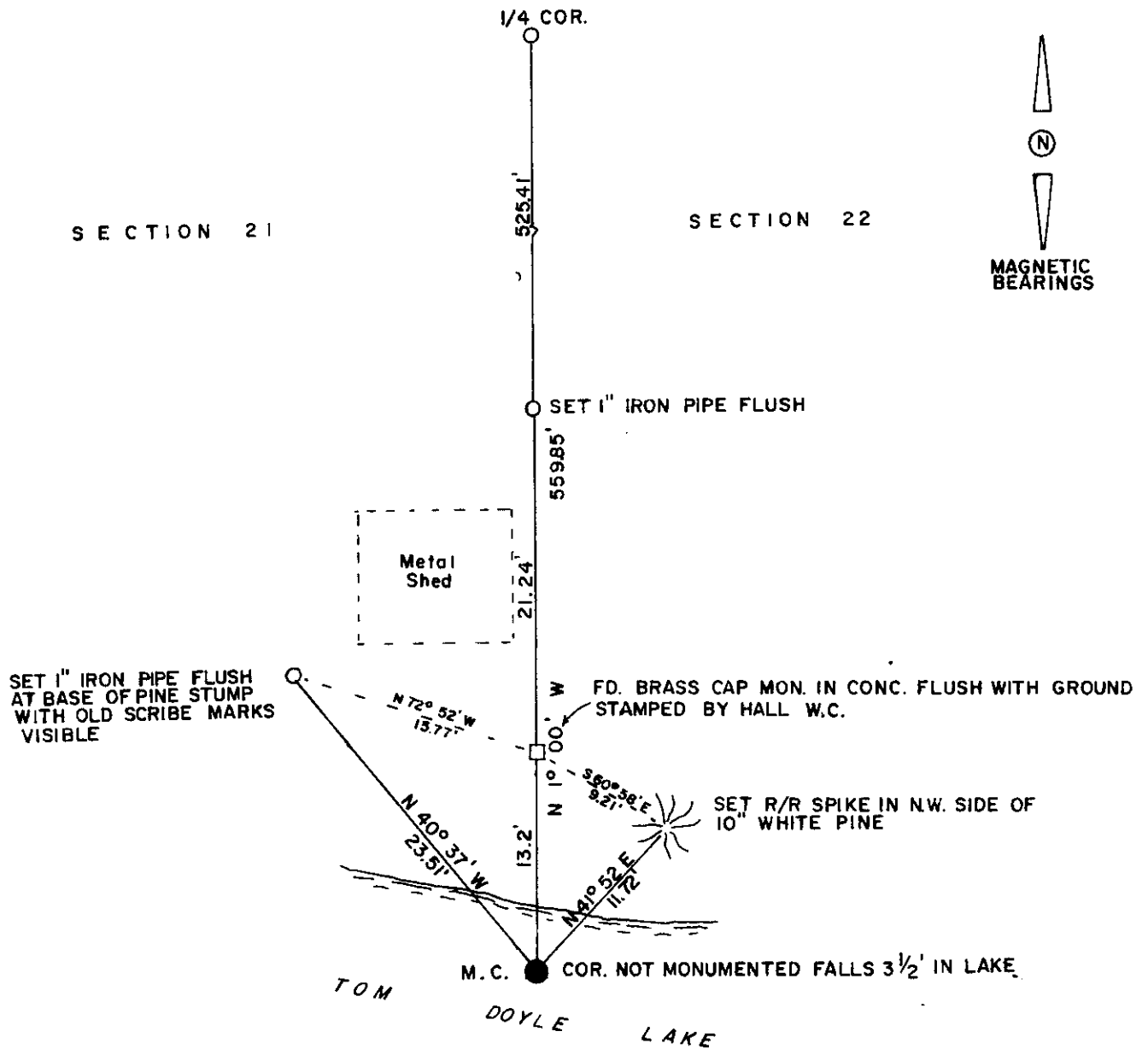
3808211600

QP-13

- cont. from front page

- May 1913 D.H. Vaughan began at N1/8<sup>th</sup> cor on E. line (Sec. 21) ..... run S. 19.97 fell 83/4 W. of 1/4 P. south from 1/4 P. 8.35 to M.C. set post from both orig. E.T. stumps, the post came in the lake so I set it 13lks. N. of where it belongs.

- June 1933 H.C. Hall set 3'x1 1/2" I.P. in lake at record distance from both orig. E.T.s New E.T. Y pine 20" N85°14'E .707ch.; conc. with brass cap stamped W.C. N0°02'E on line .20ch., ran N. from orig M.C. 8.481 to 1/4 cor. set pitch post flush with pasture; center large rock S12°E .22ch.



I, Michael J. Romportl certify that the corner location shown on this record was determined by me and that this U.S. Public Land Survey Monument Record is correct and complete to the best of my knowledge and belief.

Michael J. Romportl 2/2/83  
Genisot & Associates Inc.  
Rhineland, Wis.

