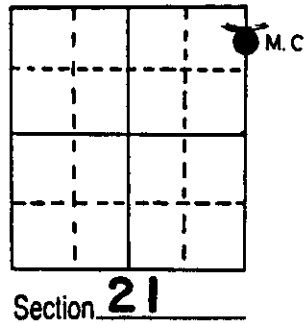


U.S. PUBLIC LAND SURVEY MONUMENT RECORD

Note: This form is intended and designed to fulfill all requirements of Wisconsin Administrative Code, Chapter A-E 5.02, U.S. Public Land Survey Monument Record (3) (a) (b) (c) (d) (e) (f) (g) (h) (i). An additional sheet may be added if necessary to conform with said requirements.

(a) Corner location: Township 38 North
 Range 8 East/West

Town/City/Village of NEWBOLD
 County of ONEIDA

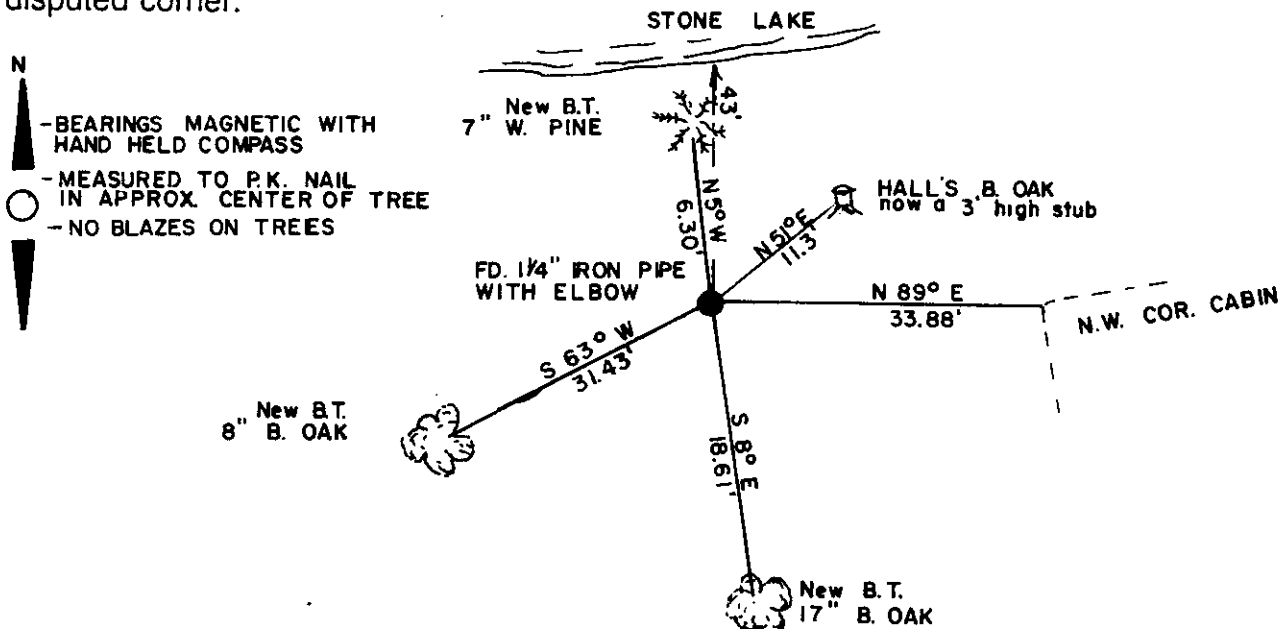


(b) (f) (g) (h) Description of monument found at this corner and if it was accepted, state all evidence (material, testimonial, occupational, plats, records, other monuments) used as a basis for accepting. If not accepted or if nothing was found, state evidence used as basis for establishing location. If reestablished through lost corner proportionate methods, indicate all monuments, distances and directions used to establish.

July 1863, Orig. cor. estab. by Alexander Anderson North between 21 & 22
 67.27 set M.C. B.T.s W Pine 10 S 41 E 11; W. Pine 12 S 27 W 22
 -June 1910 D.H. Vaughan states as $W\frac{1}{4}$ post S. 22 is gone I began at M.C. on N. side lake run N. 35.70 fell $34\frac{1}{2}$ W of M.C. on small lake
 -June 1933 H.C. Hall states he ran from the M.C. on north side Tom Doyle Lake north 35.689 to orig. M.C. and made the following B.T.s Y pine S74-22W .827; B. Oak N 51-22E .172; shore North .65

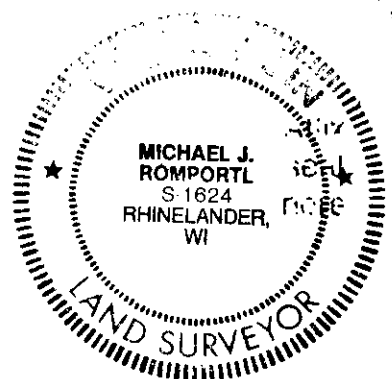
At this corner I found a $1\frac{1}{4}$ " iron pipe with an elbow on top and Halls B.Oak. I also checked south to compare my distances with Halls which were consistent. I did not find any evidence of the orig. B. T. s
 I accepted the pipe and witnessed it as shown below.

(c) (d) (e) Plan view of corner with ties to at least 4 witness monuments. If in disagreement with previously established corner, show the distances between the two corners and also indicate the ties to the disputed corner.



(i) I, Michael J. Romportl R.L.S. 1624
 (type or print name) certify that the corner location on this record was determined by me or under my direction and control and that this U.S. Public Land Survey Monument Record is correct and complete to the best of my knowledge and belief.

Michael J. Romportl March 4, 1985
 Signature Date
 GENISOT & ASSOCIATES, INC.
 RHINELANDER, WIS. 54501



Index No. 0-13

3808213600