

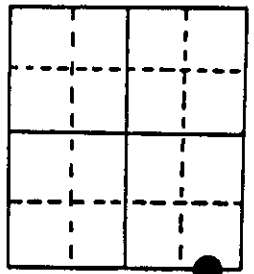
# U.S. PUBLIC LAND SURVEY MONUMENT RECORD

**Note:** This form is intended and designed to fulfill all requirements of Wisconsin Administrative Code, Chapter A-E 7.08 U.S. Public Land Survey Monument Record (3) (a) (b) (c) (d) (e) (f) (g) (h) (i). An additional sheet may be added if necessary to conform with said requirements.

(a) Corner location: Township 38 North  
 Range 8 East/West

Town/City/Village Newbold

County Oneida



Section 22

(b) (f) (g) (h) Description of monument found at this corner and if it was accepted, state all evidence (material, testimonial, occupational, plats, records, other monuments) used as a basis for accepting. If not accepted or if nothing was found, state evidence used as basis for establishing location. If reestablished through lost corner proportionate methods, indicate all monuments, distances and directions used to establish. Indicate type of monument found or set and sign post.

1863 - Alexander Anderson established this corner on the west shore of a lake, set a wood post for the Meander Corner with two BTs:

10" White Pine, S76°W, 70 Links      5" Tamarack, S45°E, 33 Links

1950's - DNR (Nelson, McDonald & Mentz) found evidence of original M.C. and set a 1" x 48" iron pipe for corner. 16" White Pine BT, N77°W, 81.23' looks to be stump blazed and scribed by them.

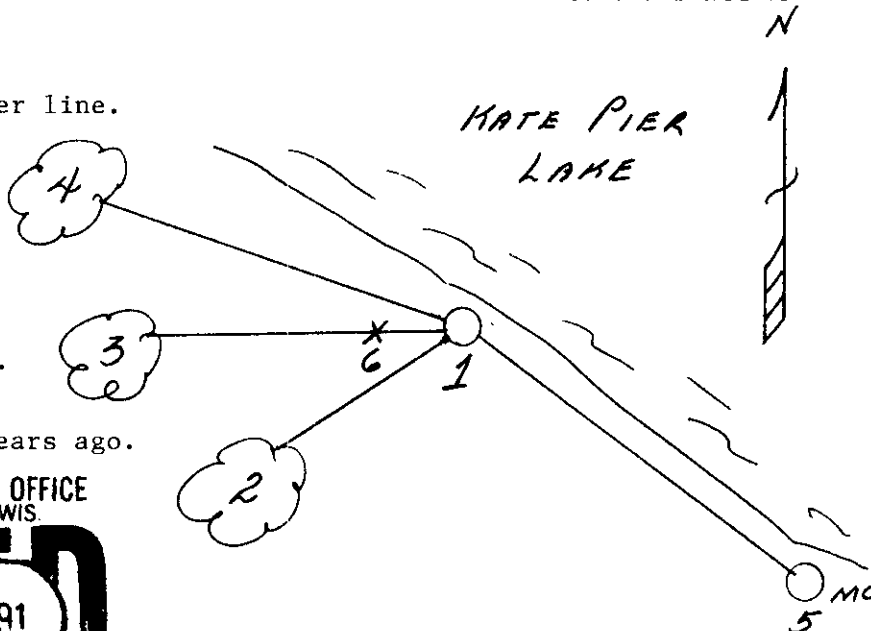
4/2/1991 - Milo E. Stefan found iron pipe by DNR and Northwest BT by them. Also, two additional BTs by unknown parties scribed "BT" 6'-7' high. I stump blazed these BTs, placed a 2" x 36" aluminum monument over iron pipe and set plastic sign post.

(c) (d) (e) Plan view of corner with ties to at least 4 witness monuments. If in disagreement with previously established corner, show the distances between the two corners and also indicate the ties to the disputed corner.

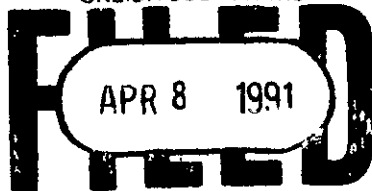
- 1) 2" x 36" aluminum monument on 1" x 48" iron pipe, 8" above water line.
- 2) 8" White Pine, S36°W, 40.26'
- 3) 5" Black Spruce, West, 46.05'
- \*4) 16" White Pine, N77°W, 81.23'
- 5) M.C. between Sections 26 & 27, S48°E, 162.30'
- 6) Plastic sign post, West, 1.8'

Distances to nail in side of BTs.  
 Stump blazes scribed "BT".

\*Stump blaze scribed "BT" 30-40 years ago.



REGISTER OF DEEDS OFFICE  
 ONEIDA COUNTY, WIS.



At \_\_\_\_\_ O'Clock \_\_\_\_\_ M  
**THOMAS H. LEIGHTON**  
 REGISTER OF DEEDS

(i) I, Milo E. Stefan  
 (type or print name) certify that the corner location on this record was determined by me or under my direction and control and that this U.S. Public Land Survey Monument Record is correct and complete to the best of my knowledge and belief.



Index No. R-16, 17

Milo E. Stefan  
 Signature

April 3, 1991  
 Date

3808 220002  
 Stamp

# U.S. PUBLIC LAND SURVEY MONUMENT RECORD

Note: This form is intended and designed to fulfill all requirements of Wisconsin Administrative Code, Chapter A-E 7.08 U.S. Public Land Survey Monument Record (3)(a-i).

(a) CORNER LOCATION  
 Meander Cor. of Secs. 22 & 27  
 Township 38 North  
 Range 8 East of the 4th P.M.  
 Town of Newbold  
 County of Oneida

WISCRS - Oneida County  
 N: 209,577.59 USft  
 E: 249,465.40 USft  
 Datum: NAD 83(2011) ep. 2010.00  
 GNSS Method: RTN - Offset  
 GNSS Control: WISCORS VRS

			MC #19
			●

Sec. 22, T. 38 N., R. 8 E.

(b)(f)(g)(h) Description of monument found at this corner and if it was accepted, state all evidence (material, testimonial, occupational, plats, records, other monuments) used as a basis for accepting. If not accepted or if nothing was found, state evidence used as basis for establishing location. If re-established through lost corner proportionate methods, indicate all monuments, distances and directions used to establish. Indicate type of monument and sign post found or set.

*This record is a perpetuation of the following land corner document(s):*

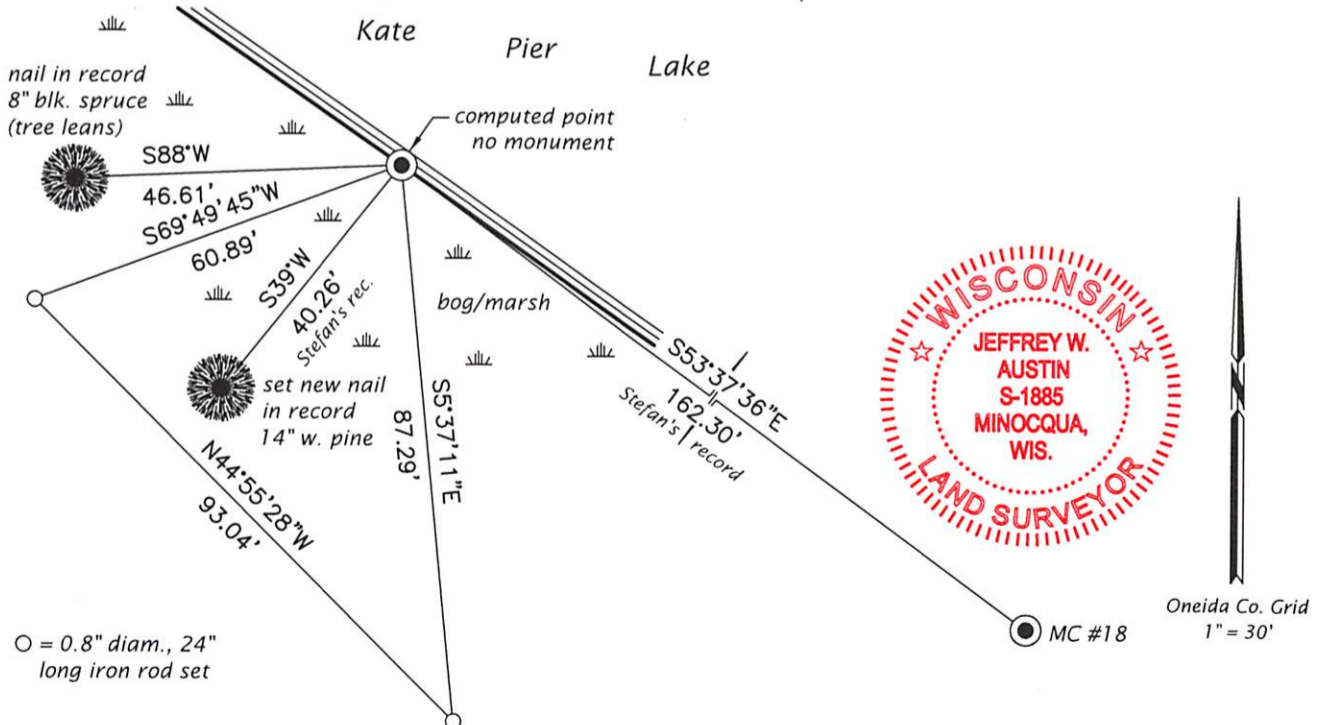
*Apr. 3, 1991: USPLS Monument Record by Milo E. Stefan, filed in Oneida County*

*A complete history of the corner can be found on the previous land corner document(s). I accept the record activity as a true and faithful perpetuation or reestablishment of the original corner location and further perpetuate it as described below.*

*Feb. 8, 2022: I visited the corner in mid-winter and was unable to locate the record monument. It falls at the edge of a floating bog and I believe it tipped into the lake since Stefan's visit. As Stefan's remaining trees are dead or in poor condition, my goal was to preserve the remaining evidence at this corner by setting reference monuments in upland locations. I established the corner point by intersecting record measurements from Stefan's accessories as shown below. The record 16" white pine has fallen into the lake. From the corner point, I established accessories as indicated below with an electronic total station.*

*The coordinate value shown has been verified by averaging two or more GNSS observations at markedly different times.*

(c)(d)(e) Plan view of corner with ties to at least 4 witness monuments. If in disagreement with previously established corner, show the distances between the two corners and also indicate the ties to the disputed.



(i) I, Jeffrey W. Austin, Professional Land Surveyor No. S-1885, hereby certify that the corner location on this record was determined by me or under my direction and control and that this U.S. Public Land Survey Monument Record is correct and complete to the best of my knowledge and belief.

REGISTER OF DEEDS OFFICE  
 ONEIDA COUNTY  
 FILED

MAR 07 2022

KYLE J. FRANSON  
 REGISTER OF DEEDS

[Signature]

FEB. 22, 2022

Signature

Date

3808220002 (INDEX NO. R-16,17)