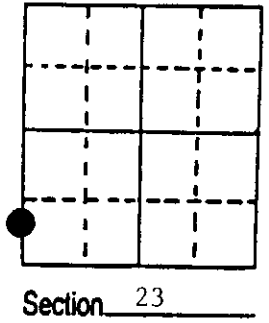


U.S. PUBLIC LAND SURVEY MONUMENT RECORD

Note: This form is intended and designed to fulfill all requirements of Wisconsin Administrative Code, Chapter A-E 7.08 U.S. Public Land Survey Monument Record (3) (a) (b) (c) (d) (e) (f) (g) (h) (i). An additional sheet may be added if necessary to conform with said requirements.

(a) Corner location: Township 38 North
 Range 8 East/West
 Town/City/Village Newbold
 County Oneida



(b) (f) (g) (h) Description of monument found at this corner and if it was accepted, state all evidence (material, testimonial, occupational, plats, records, other monuments) used as a basis for accepting. If not accepted or if nothing was found, state evidence used as basis for establishing location. If reestablished through lost corner proportionate methods, indicate all monuments, distances and directions used to establish. Indicate type of monument found or set and sign post.

1863 - Alexander Anderson established this corner on the north shore of a lake, 16.96 chains north of the Section Corner and set a wood post for the M.C. and made two BTs:

5" Tamarack, S62°E, 24 Links 5" Tamarack, N82°W, 13 Links

1950's - DNR (Nelson, McDonald and Mentz) found this corner while working Section 23 - no record they did anything.

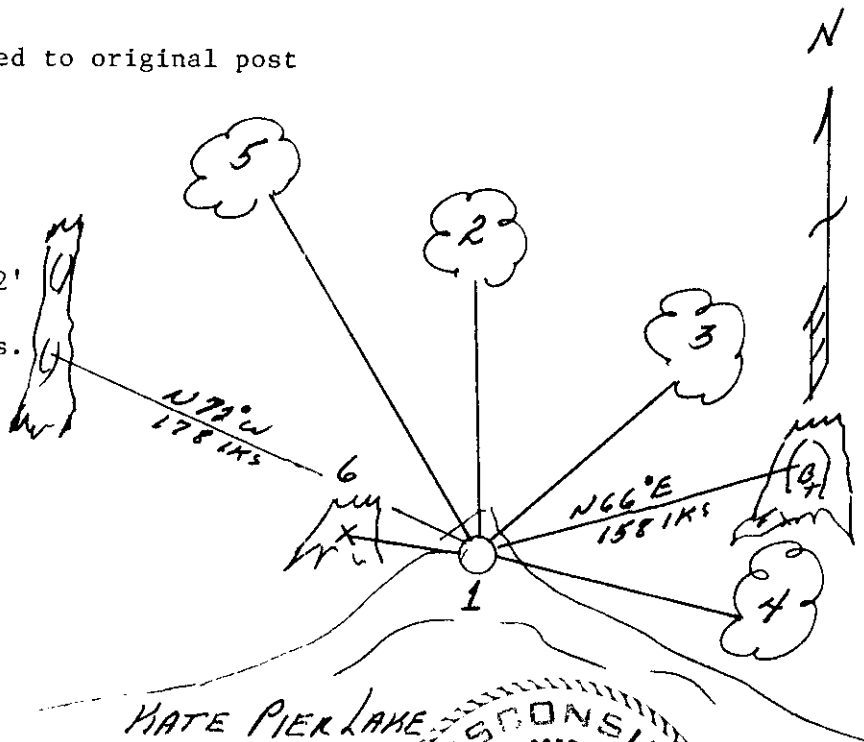
4/2/1991 - Milo E. Stefan found remains of both Tamarack BTs and a 6" x 6' post rotted off 6" below water line. This looks to be the original post point. I spiked a 2" x 36" aluminum monument to this post and replaced it in its original position, made new BTs and set plastic sign post.

4/8/91 - Found notes in DNR office that they made two new BTs
MES 12" White Pine, N66E, 158 lks. 16" White Pine, N72W, 178 lks.

(c) (d) (e) Plan view of corner with ties to at least 4 witness monuments. If in disagreement with previously established corner, show the distances between the two corners and also indicate the ties to the disputed corner.

- 1) 2" x 36" aluminum monument spiked to original post point, cap 4" above water line.
- 2) 9" White Pine, N1°E, 57.89'
- 3) 3" Tamarack, N48°E, 50.02'
- 4) 5" Tamarack, S85°E, 42.15'
- 5) 8" White Birch, N28°W, 98.90'
- 6) Plastic sign post, spiked to stump of original BT, N82°W, 8.2'

Distances to nail in side of BTs.
 Stump blazes scribed "BT".



REGISTER OF DEEDS OFFICE
 ONEIDA COUNTY, WIS.
FILED
 APR 8 1991
 At O'Clock M
THOMAS H. LEIGHTON
 REGISTER OF DEEDS

WISCONSIN
 MILO E. STEFAN
 S 1558
 CHINELANDER,
 WIS.
 LAND SURVEYOR

(i) I, Milo E. Stefan
 (type or print name) certify that the corner location on this record was determined by me or under my direction and control and that this U.S. Public Land Survey Monument Record is correct and complete to the best of my knowledge and belief.

Milo E. Stefan April 3, 1991
 Signature Date

3808220600
 Stamp

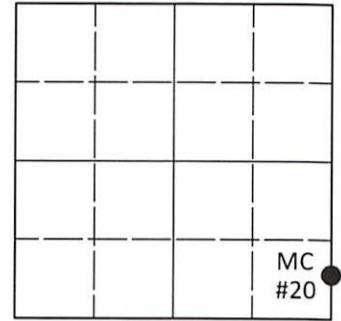
Index No. 0,R-17

U.S. PUBLIC LAND SURVEY MONUMENT RECORD

Note: This form is intended and designed to fulfill all requirements of Wisconsin Administrative Code, Chapter A-E 7.08 U.S. Public Land Survey Monument Record (3)(a-i).

(a) CORNER LOCATION
 Meander Cor. of Secs. 22 & 23
 Township 38 North
 Range 8 East of the 4th P.M.
 Town of Newbold
 County of Oneida

WISCRS - Oneida County
 N: 210,335.63 USft
 E: 249,587.81 USft
 Datum: NAD 83(2011) ep. 2010.00
 GNSS Method: RTN - Offset
 GNSS Control: WISCRS VRS



Sec. 22, T. 38 N., R. 8 E.

(b)(f)(g)(h) Description of monument found at this corner and if it was accepted, state all evidence (material, testimonial, occupational, plats, records, other monuments) used as a basis for accepting. If not accepted or if nothing was found, state evidence used as basis for establishing location. If re-established through lost corner proportionate methods, indicate all monuments, distances and directions used to establish. Indicate type of monument and sign post found or set.

This record is a perpetuation of the following land corner document(s):

Apr. 3, 1991: USPLS Monument Record by Milo E. Stefan, filed in Oneida County

A complete history of the corner can be found on the previous land corner document(s). I accept the record activity as a true and faithful perpetuation or reestablishment of the original corner location and further perpetuate it as described below.

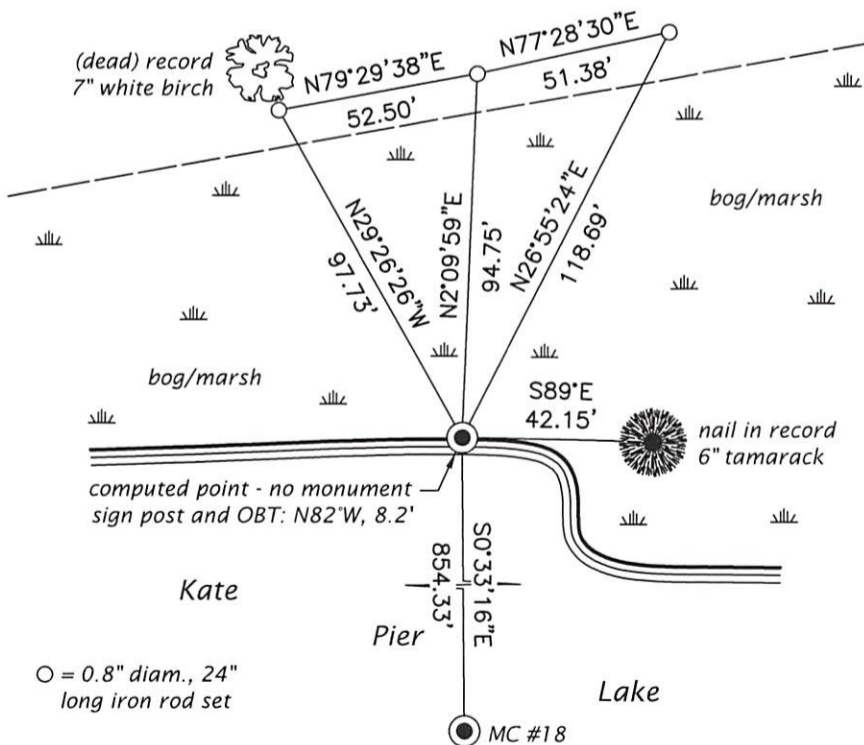
Feb. 8, 2022: I visited the corner in mid-winter and was unable to locate the record monument. It falls at the edge of a floating bog and I believe it tipped into the lake since Stefan's visit. As Stefan's remaining trees are dead or in poor condition, my goal was to preserve the remaining evidence at this corner by setting reference monuments in upland locations. I established the corner point by intersecting record measurements from Stefan's nails in the following trees:

- (dead) tamarack 4" N48°E, 50.02'*
- (dead) white birch 7" N28°W, 98.90'*
- (live) tamarack 6" S89°E, 42.15'*

From the corner point, I established accessories as indicated below with an electronic total station.

The coordinate value shown has been verified by averaging two or more GNSS observations at markedly different times.

(c)(d)(e) Plan view of corner with ties to at least 4 witness monuments. If in disagreement with previously established corner, show the distances between the two corners and also indicate the ties to the disputed.



REGISTER OF DEEDS OFFICE
ONEIDA COUNTY
FILED

MAR 07 2022

KYLE J. FRANSON
REGISTER OF DEEDS

(i) I, Jeffrey W. Austin, Professional Land Surveyor No. S-1885, hereby certify that the corner location on this record was determined by me or under my direction and control and that this U.S. Public Land Survey Monument Record is correct and complete to the best of my knowledge and belief.

[Handwritten Signature]
Signature

FEB. 22, 2022
Date