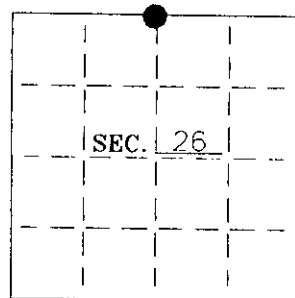


# U. S. PUBLIC LAND SURVEY MONUMENT RECORD

Note: This form is intended and designed to fulfill all requirements of Wisconsin Administrative Code—Chapter A-E 7.08 U. S. Public Land Survey Monument Record (3)(a)(b)(c)(d)(e)(f)(g)(h)(i). An additional sheet may be added if necessary to conform with said requirements.

(a) CORNER LOCATION: State Plane Coordinates  
N1/4 corner of Sec. 26  
 Township 38 North  
 Range 8 East  
 Town Newbold  
 County of Oneida



(b) HISTORY OF ORIGINAL CORNER ESTABLISHMENT:

Original Surveyor: Alex Anderson  
 Date of Survey: Commenced 1863  
 Completed 1863

Original B.T.'S

8" Birch, N65°W, 15lks  
 8" Yellow Pine, S4°E, 19lks

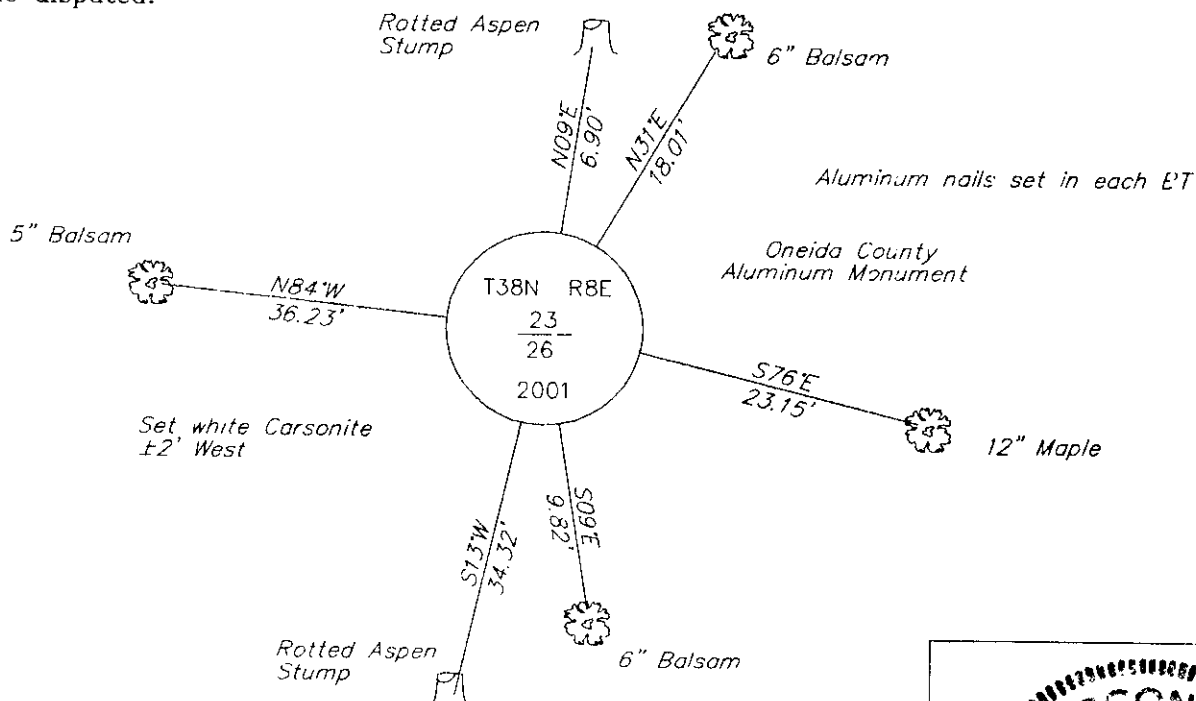
(b)(f)(g)(h) Description of monument found at this corner and if it was accepted—state all evidence (material—testimonial—occupation—plats—records—other monuments) used as a basis for accepting. If not accepted or if nothing was found state evidence used as basis for establishing location. If reestablished through lost corner proportionate methods indicate all monuments—distances and directions used to establish. Indicate type of monument and sign post found or set.

1952— Ivan Branham, Oneida County Surveyors' Map #B2840, shows an iron pipe found in place that checked with evidence of a BT he found.

1954— Wisconsin Conservation Department survey map done by Alvin Nelson, shows a 1" iron pipe in place. BTs'; 8" Aspen, N3°E, .10 ch (6.6'), 8" Aspen, S13°W, .52 chs (34.32').

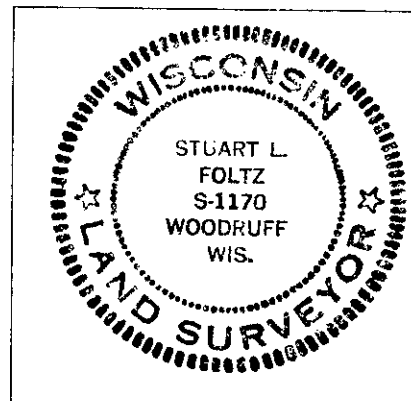
2001— I found and accepted a 1" iron pipe in place. I also found Aspen stumps that checked with Nelson's BTs. I replaced the 1" iron pipe with an Oneida County Aluminum Monument. See drawing below.

(c)(d)(e) Plan view of corner with ties to at least 4 witness monuments. If in disagreement with previously established corner—show the distances between the two corners and also indicate the ties to the disputed.



(i) I Stuart L. Foltz S-1170  
 hereby certify that the corner location on this record was determined by me or under my direction and control and that this U.S. Public Land Survey Monument Record is correct and complete to the best of my knowledge and belief.

Signature [Handwritten Signature] Date 1/23/03  
 Foltz and Associates, Inc.



INDEX NO. R 19

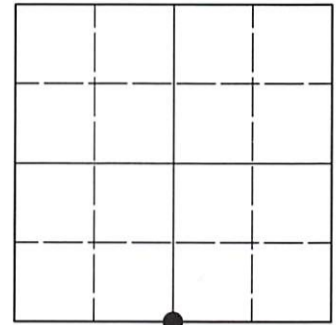
38-08-23-00-20

# U.S. PUBLIC LAND SURVEY MONUMENT RECORD

Note: This form is intended and designed to fulfill all requirements of Wisconsin Administrative Code, Chapter A-E 7.08 U.S. Public Land Survey Monument Record (3)(a-i).

(a) CORNER LOCATION  
 1/4 Cor. of Secs. 23 & 26  
 Township 38 North  
 Range 8 East of the 4th P.M.  
 Town of Newbold  
 County of Oneida

WISCRS - Oneida County  
 N: 209,595.28 USft  
 E: 252,184.42 USft  
 Datum: NAD 83(2011) ep. 2010.00  
 GNSS Method: RTN - Direct  
 GNSS Control: WISCORS VRS



Sec. 23, T. 38 N., R. 8 E.

(b)(f)(g)(h) Description of monument found at this corner and if it was accepted, state all evidence (material, testimonial, occupational, plats, records, other monuments) used as a basis for accepting. If not accepted or if nothing was found, state evidence used as basis for establishing location. If re-established through lost corner proportionate methods, indicate all monuments, distances and directions used to establish. Indicate type of monument and sign post found or set.

*This record is a perpetuation of the following land corner document(s):*

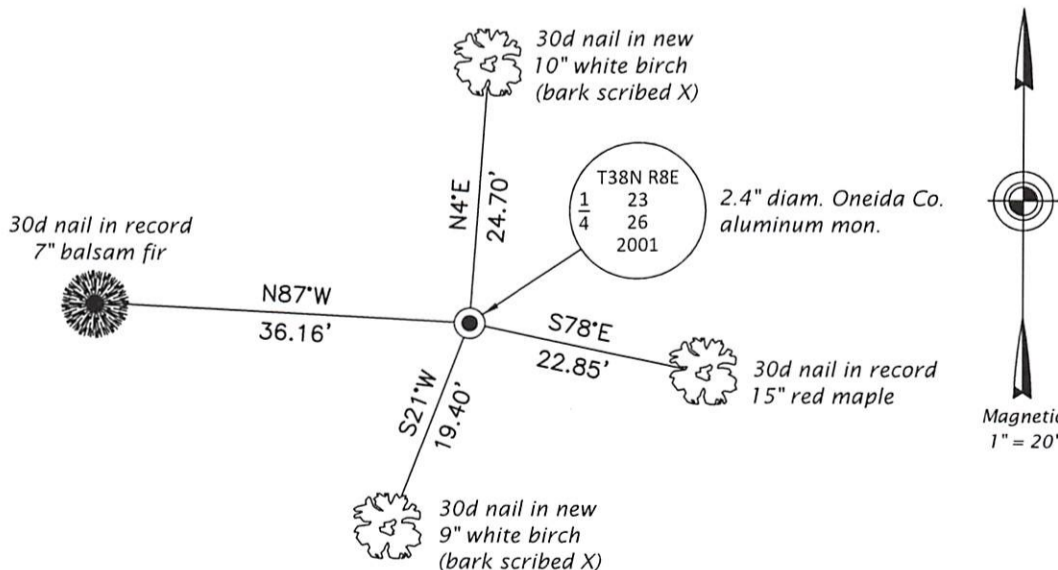
*Jan. 23, 2003: USPLS Monument Record by Stuart L. Foltz, filed in Oneida County*

*A complete history of the corner can be found on the previous land corner document(s). I accept the record activity as a true and faithful perpetuation or reestablishment of the original corner location and further perpetuate it as described below.*

*May 23, 2021: I found and accepted the record monument, a 2.4" diam. aluminum pipe, firmly set, with a 3.3" diam. Oneida Co. aluminum cap projecting 4" above a collar of stone. The record bearing tree at S9°E is down; the record bearing tree at N31°E is a stump. I found or established accessories as shown below. I found a white vinyl sign post bearing West, 2.0 ft.*

*The coordinate value shown has been verified by at least one of the following methods: 1) comparison to a previously GNSS determined published value; 2) the value is the average of two or more GNSS observations at a markedly different time; 3) one or more distances were measured back to the GNSS observed corner from temporary GNSS observed offset locations.*

(c)(d)(e) Plan view of corner with ties to at least 4 witness monuments. If in disagreement with previously established corner, show the distances between the two corners and also indicate the ties to the disputed.



REGISTER OF DEEDS OFFICE  
 ONEIDA COUNTY  
 FILED

JUN 23 2021

KYLE J. FRANSON  
 REGISTER OF DEEDS

(i) I, Jeffrey W. Austin, Professional Land Surveyor No. S-1885, hereby certify that the corner location on this record was determined by me or under my direction and control and that this U.S. Public Land Survey Monument Record is correct and complete to the best of my knowledge and belief.

\_\_\_\_\_  
 Signature JUNE 1, 2021  
 Date