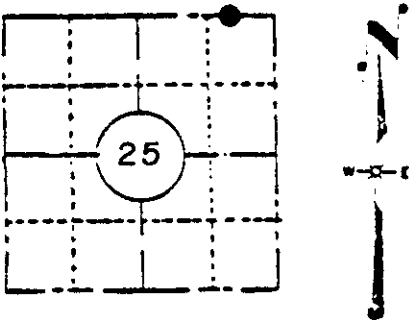


U. S. PUBLIC LAND SURVEY MONUMENT RECORD

INSTRUCTIONS: This record shall show the location of the corner and shall include all of the following nine elements (a through i).

a) Identify the corner by reference to the U.S. public land survey system.

MEANDER CORNER
(TIM LYNN LAKE)
NORTH LINE SECTION 25,
T 38N, R 8E. ONEIDA CO.,
WISCONSIN.



LOCATION SKETCH

Location of landmark indicated by "●"

1. Wood post set per original gov't survey notes.
Spruce 6 N 60 W 29 lks
Tamarack 5 S 67 W 25 lks
2. D.H. Vaughan, Nov. 26, 1914- "Went to M.C. on W. side of Tim Lennon Lake. Found both trees dead but O.K. Set post and run W var. 2° 45' E, 40.77. Fell 1.76 S of M.C. on Spider Lake. Tam is dead, pine is a burned stump. Remarked it and set post and made new bearing tree-W. Pine 17 S 30° W 97-3/4. Found an overrun of 1.66. Corrected line East. Proportioned overrun and set 1/4 P. at 26.81-3/4 and 1.09-1/3 N of rand. Corrected line E. and set 1/8 P. at 6.02 and 24 1/2 N. of rand."-Excerpt from D.H. Vaughan notes. No B.T. in notes but I. Branham data sketch of Dec. 21, 1956 indicates Vaughan B.T. Tam 6 N 60 E 3 1/2
3. I. Branham, 1957-58- Copy of survey notes indicates he surveyed Section 25, T38N, R8E.
4. Survey of North line and N-S center section line of Section 25 by Lloyd Scott, 1959.
5. Sy Poskie, 1976-Accepted corner as correct.

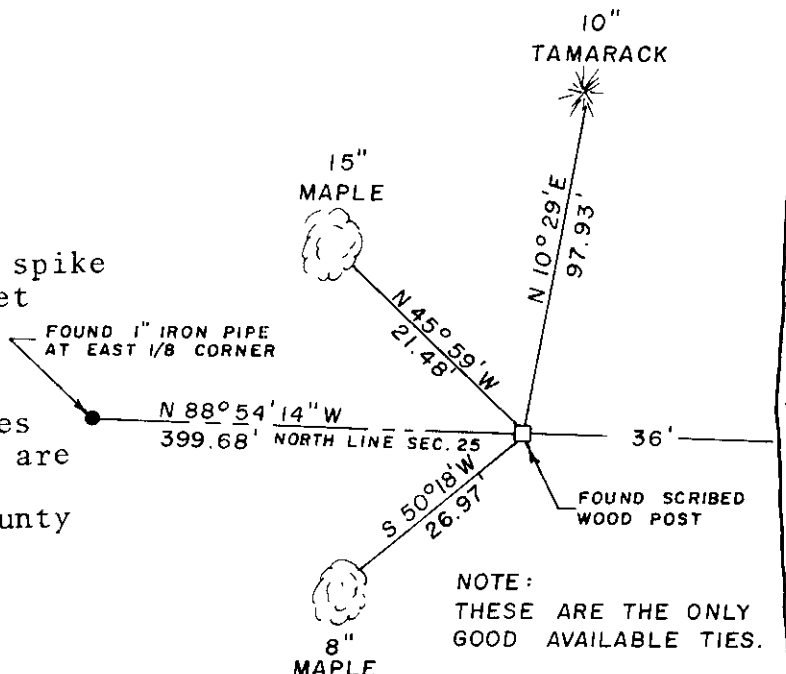
b) Describe any record evidence, monument evidence, occupational evidence, testimonial evidence or any other material evidence you considered, and whether the monument was found or placed.

September 19, 1983- On this date, I and Robert D. Engelman, R.L.S., traversed to this corner. We recovered intact a 4" square pointed cedar post. Scribing was discernable on South face of post. Left post in place and set a 2"x30" iron pipe along East side of post to preserve location. Believe this to be the post set by Vaughan in 1914 and was accepted as the corner as measurements to corner to West compare favorably with Vaughan's recorded distances.

(c) In the plan view drawing below, provide reference ties to at least 4 witness monuments, or, if the location is within a municipality, to at least 2 witness monuments. (Witness monuments shall be made of concrete, natural stone, iron or other equally durable material, except wood.) Describe witness monuments.

(d) Show a plan view drawing depicting the relevant monuments and reference ties which is sufficient in detail to enable accurate relocation of the corner monument if the corner monument is disturbed. Indicate north.

NOTE: All ties to head of 40d spike with metal 1 1/2" washer set in blaze of tree. Bearings shown were determined by occupying corner and turning angles with T-2 theodolite and are in conformity with CSM recorded with Oneida County Register of Deeds.



NOTE: THESE ARE THE ONLY GOOD AVAILABLE TIES.

Compared with all record data and accepted as correct.

Robert H. Winat
Robert H. Winat, Oneida Co. Surv.
9 November 1983

3803240008

R-2425
TIM LYNN LAKE
R-24-25

(e) Describe any material discrepancy between the location of the corner as restored or reestablished and the location of that corner as previously restored or reestablished by distance and direction. Show the discrepancy on the plan view drawing under (d), above. Show the distances between the corner as previously restored or reestablished and (1) the corner as restored or reestablished, and (2) to at least 2 of the witness monuments shown on the drawing in (d), above.

See D.

(f) Was the corner restored through acceptance of (1) an obliterated evidence location, or, (2) a found perpetuated location?

Found perpetuated location.

(g&h) Was the corner reestablished through lost corner proportionate methods? If so, show the method, including the directions and distances to other public land survey corners used as evidence or used for proportioning in determining the corner location?

Not applicable.

REGISTRAR'S OFFICE }
Oneida County, Wis. }

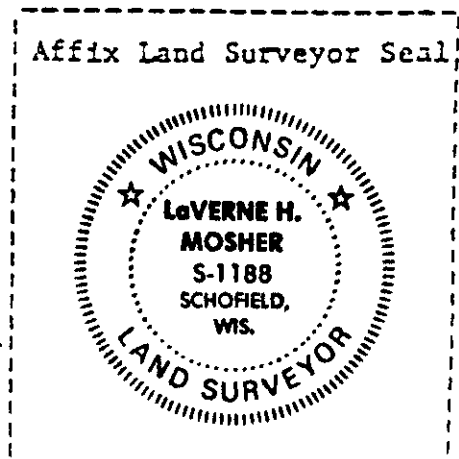
Received for record the 15 day of
March A.D. 1984 at
11:30 o'clock A. M. and recorded in
Vol. _____ on page _____

Doris Verage Kuehn
Register
Cynthia A. Pires
Deputy

(i) I, LaVerne H. Mosher, R.L.S.
(type or print name) certify that the corner location shown on this record was determined by me or under my direction and control and that this U.S. Public Land Survey Monument Record is correct and complete to the best of my knowledge and belief.

LaVerne H. Mosher
Signature

September 29, 1983
Date

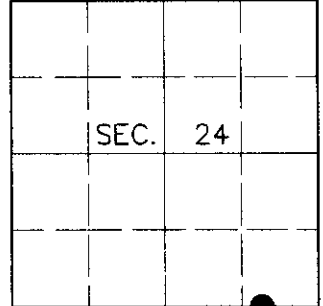


U.S. PUBLIC LAND SURVEY MONUMENT RECORD

Note: This form is intended and designed to fulfill all requirements of Wisconsin Administrative Code, Chapter A-E 7.08, U.S. Public Land Survey Monument Record (3)(a)(b)(c)(d)(e)(f)(g)(h)(i). An additional sheet may be added if necessary to conform with said requirements.

(a) CORNER LOCATION
 Meander Corner of Section 24
 Township 38 North
 Range 8 East
 Town of Newbold

State Plane Coordinates
 X
 Y
 Datum
 County of Oneida



(b) HISTORY OF ORIGINAL CORNER ESTABLISHMENT

Original Surveyor: Alexander Anderson

Original Bearing Trees:

Date of Survey: Commenced July 10, 1863
 Completed July 21, 1863

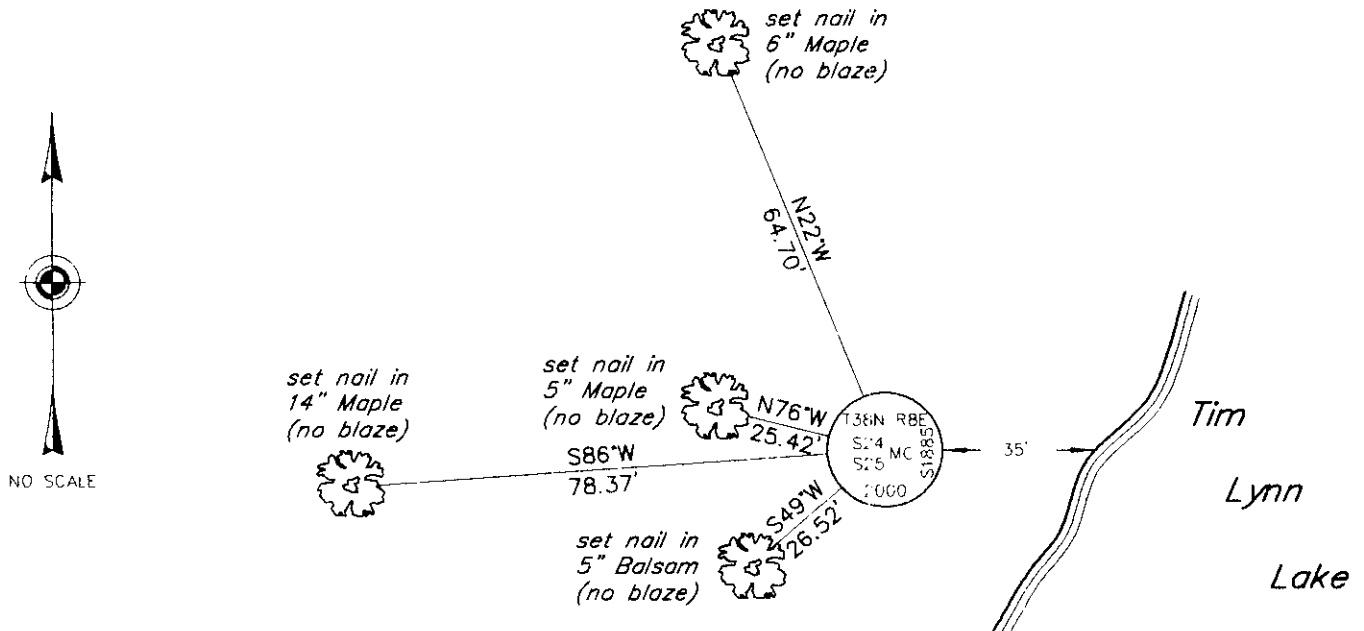
Spruce 6 N60°W, 29 links
 Tamarack 5 S67°W, 25 links

(b)(f)(g)(h) Description of monument found at this corner and if it was accepted, state all evidence (material, testimonial, occupational, plats, records, other monuments) used as a basis for accepting. If not accepted or if nothing was found, state evidence used as basis for establishing location. If reestablished through lost corner proportionate methods, indicate all monuments, distances and directions used to establish. Indicate type of monument and sign post found or set.

November 9, 1983: U.S. Public Land Survey Monument Record by LaVerne H. Mosher, Registered Land Surveyor. Mosher found a scribed cedar post with the following bearing trees: Tamarack 10° N10°29'E, 97.93 feet; Maple 15° N45°59'W, 21.48 feet; Maple 8° S50°18'W, 26.97 feet.

July 3, 2000: I found and accepted a 2-1/4" dia., 30" long iron pipe previously set to replace Mosher's cedar post. I recovered Mosher's post during the Fall 1999 Oneida County GPS project and I set the pipe to replace the post at that time. I found Mosher's Maple stump S53°W, 27.2 feet and his Maple stump 13° N42°W, 21.8 feet. I replaced the pipe with a 2-1/2" dia., 60" long aluminum pipe with 3-1/4" dia. Oneida County aluminum cap 8" above grade and marked as shown below. I established accessories as shown below and set a plastic sign post Northeast, 1 foot.

(c)(d)(e) Plan view of corner with ties to at least 4 witness monuments. If in disagreement with previously established corner, show the distances between the two corners and also indicate the ties to the disputed corner.



(i) I, Jeffrey W. Austin, Registered Land Surveyor S-1885, hereby certify that the corner location on this record was determined by me or under my direction and control and that this U.S. Public Land Survey Monument Record is correct and complete to the best of my knowledge and belief.

[Handwritten Signature]

 Signature

7 30 00

 Date



INDEX NO. R-24,25