

Stock No. 26273

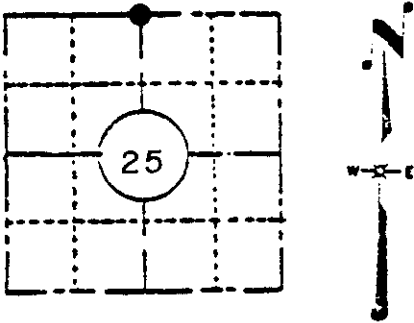
# U. S. PUBLIC LAND SURVEY MONUMENT RECORD

**INSTRUCTIONS:**

This record shall show the location of the corner and shall include all of the following nine elements (a through i).

- (a) Identify the corner by reference to the U.S. public land survey system.

**NORTH 1/4 CORNER  
SECTION 25, T38N, R8E.  
ONEIDA COUNTY,  
WISCONSIN.**



**LOCATION SKETCH**

(Location of landmark indicated by "●")

1. Post set during original gov't survey  
Tamarack 6 S 28 W 9 lks  
No other near
2. D.H. Vaughan-Nov. 26, 1914-"Went to M.C. on W. side of Tim Lennon Lake. Found both trees dead but O.K. Set post and run W. var. 2° 45' E, 40.77. Fell 1.76 S of M.C. on Spider Lake. Tam is dead, pine is a burned stump. Remarked it and set post and made new bearing tree-W. Pine 17 S 30° W 97-3/4. Found an overrun of 1.66. Corrected line East. Proportioned overrun and set 1/4 P. at 26.81-3/4 and 1.09-1/3 N of rand. Corrected line E. and set 1/8P. at 6.02 and 24 1/2 N. of Rand." Excerpt from D.H. Vaughan notes. No B.T. in notes but I. Branham data sketch of Dec. 21, 1956 indicates  
Vaughan B.T. Tam 6 N 60 E 3 1/2
3. I. Branham 1957-58. Copy of survey notes indicates he surveyed Section 25, T38N, R8E. His notes indicate he accepted corner set by Maine? and show a post and well point as "other 1/4 P." He indicated that no evidence of Vaughan's post was found.
4. Survey of North line and N-S center section line of Section 25 by Lloyd Scott showing Maine 1/4 corner and "other 1/4 post".-1959 Accepted Maine post as true corner.

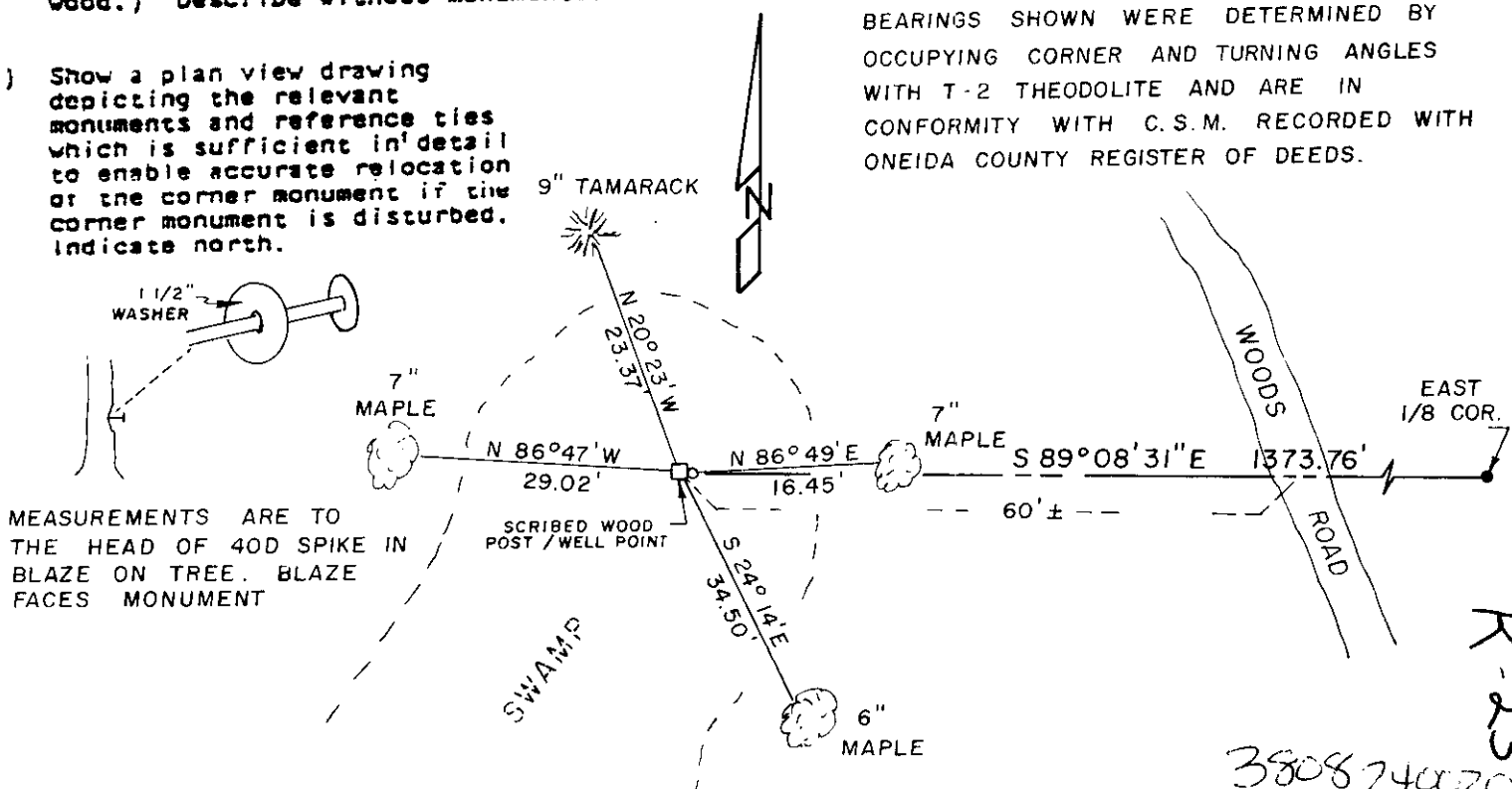
- (b) Describe any record evidence, monument evidence, occupational evidence, testimonial evidence or any other material evidence you considered, and whether the monument was found or placed.

September 8, 1983- On this date, I and Robert D. Engelman, R.L.S. traversed to this corner. Recovered intact and in good shape a 4" square cedar post scribed "S 1/4" with well point and a 1 1/2" pipe driven along East side. A comparison of our measurements from the M.C. on the West side of Tim Lynn Lake with record distance by D.H. Vaughan(1914) were favorable (Vaughan=26.81-3/4 chains, LHM=1773.44') but post recovered is about 49 feet Southwest of Maine 1/4 corner which was not located. (I believe Maine corner destroyed by bulldozing of logging road as theoretical corner point is located under dirt and stump debris.) After due consideration of distances to adjoining corners of record, roads, and established lines of occupation, I accepted the post/well point as best evidence of corner location.

- (c) In the plan view drawing below, provide reference ties to at least 4 witness monuments, or, if the location is within a municipality, to at least 2 witness monuments. (Witness monuments shall be made of concrete, natural stone, iron or other equally durable material, except wood.) Describe witness monuments.

- (d) Show a plan view drawing depicting the relevant monuments and reference ties which is sufficient in detail to enable accurate relocation of the corner monument if the corner monument is disturbed. Indicate north.

BEARINGS SHOWN WERE DETERMINED BY OCCUPYING CORNER AND TURNING ANGLES WITH T-2 THEODOLITE AND ARE IN CONFORMITY WITH C.S.M. RECORDED WITH ONEIDA COUNTY REGISTER OF DEEDS.



MEASUREMENTS ARE TO THE HEAD OF 40D SPIKE IN BLAZE ON TREE. BLAZE FACES MONUMENT

R-23  
3808240020

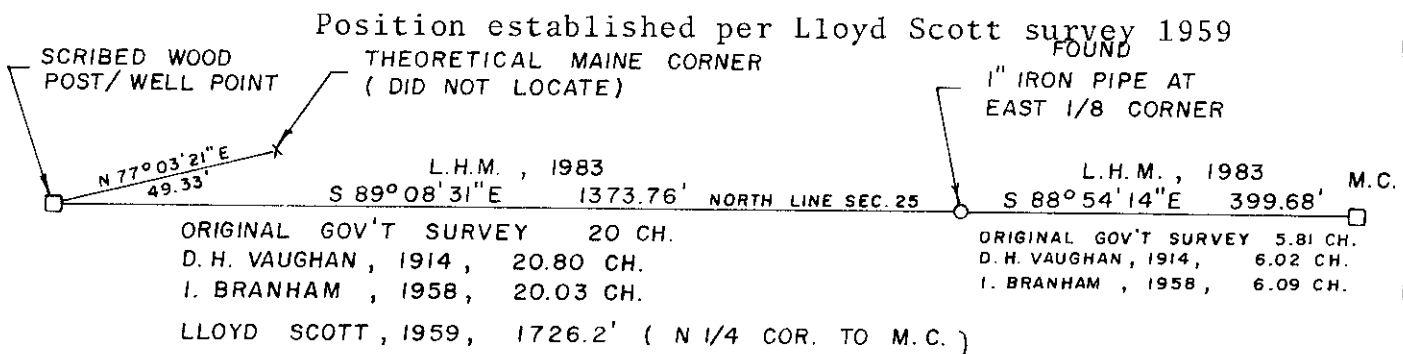
(e) Describe any material discrepancy between the location of the corner as restored or reestablished and the location of that corner as previously restored or reestablished by distance and direction. Show the discrepancy on the plan view drawing under (d), above. Show the distances between the corner as previously restored or reestablished and (1) the corner as restored or reestablished, and (2) to at least 2 of the witness monuments shown on the drawing in (d), above.

See G and H below.

(f) Was the corner restored through acceptance of (1) an obliterated evidence location, or, (2) a found perpetuated location?

Found perpetuated location.

(g&h) Was the corner reestablished through lost corner proportionate methods? If so, show the method, including the directions and distances to other public land survey corners used as evidence or used for proportioning in determining the corner location?



REGISTER'S OFFICE }  
Oneida County, Wis. }

Received for Record the 15 day of March A.D. 1984 at 11:30 o'clock A. M. and recorded in

Vol. \_\_\_\_\_ on page \_\_\_\_\_

Doris Verage Kuhn Register  
Cynthia A. Pitts Deputy

Compared with all record data and accepted as correct.

Robert H. Winat  
Robert H. Winat, Oneida Co. Surv.  
9 November 1983

Affix Land Surveyor Seal



(i) I, Laverne H. Mosher, R.L.S.  
(type or print name) certify that the corner location shown on this record was determined by me or under my direction and control and that this U.S. Public Land Survey Monument Record is correct and complete to the best of my knowledge and belief.

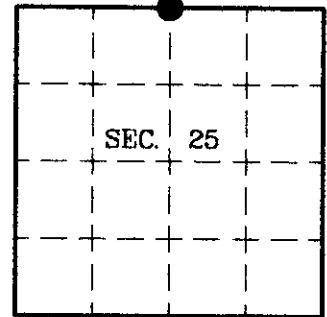
Laverne H. Mosher September 28, 1983  
Signature Date

LHM SURVEYING  
6006 HILGEMANN STREET  
SCHOFIELD, WI 54476

# U.S. PUBLIC LAND SURVEY MONUMENT RECORD

Note: This form is intended and designed to fulfill all requirements of Wisconsin Administrative Code, Chapter A-E 7.08 U.S. Public Land Survey Monument Record (3)(a)(b)(c)(d)(e)(f)(g)(h)(i). An additional sheet may be added if necessary to conform with said requirements.

(a) CORNER LOCATION: State Plane Coordinates  
 North 1/4 Corner of Section 25 X  
 Township 38 North Y  
 Range 8 East Datum Base  
 Town of Newbold County of Oneida



(b) HISTORY OF ORIGINAL CORNER ESTABLISHMENT

Original Surveyor: Alexander Anderson Original B.T.s  
 Date of Survey: Commenced 1863  
 Completed 1863

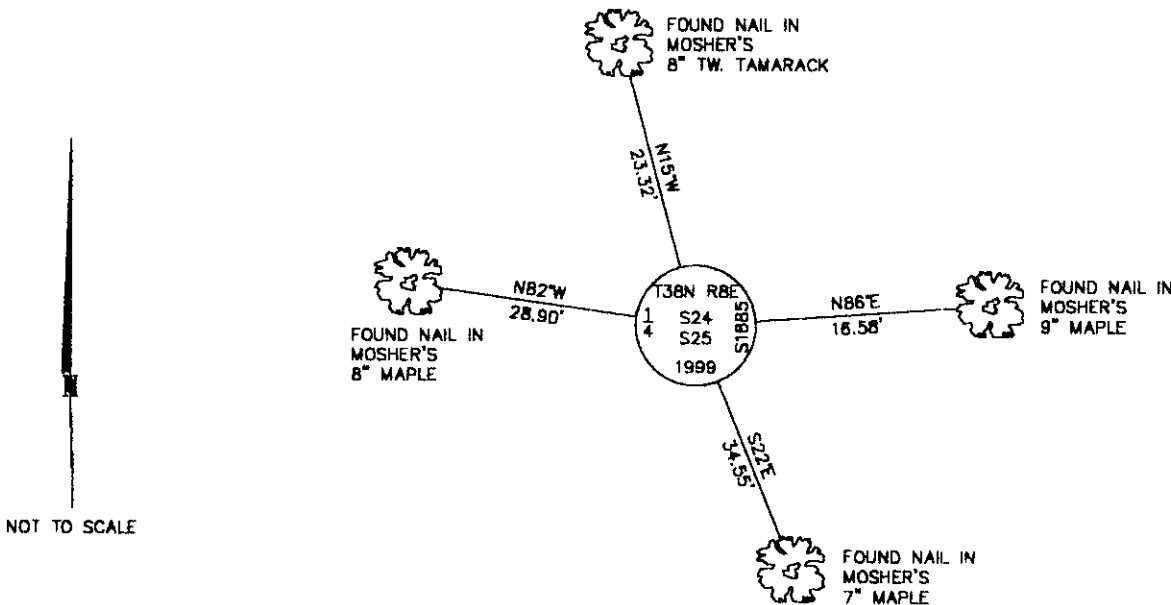
Tamarack 6 S28°W 9 lks.  
 No other near.

(b)(f)(g)(h) Description of monument found at this corner and if it was accepted, state all evidence (material, testimonial, occupational, plats, records, other monuments) used as a basis for accepting. If not accepted or if nothing was found, state evidence used as basis for establishing location. If reestablished through lost corner proportionate methods, indicate all monuments, distances and directions used to establish. Indicate type of monument and sign post found or set.

This corner was previously restored by Laverne H. Mosher, Registered Land Surveyor on September 8, 1983. The complete history of this corner can be found on his U.S. Public Land Survey Monument Record.

August 30, 1999: I found and accepted the remains of Mosher's wood post with two 1-3/4" dia. iron pipes adjacent. I replaced the post with a 2-1/2" dia., 30" long aluminum pipe with 3-1/4" dia. Oneida Co. aluminum cap 4" above the ground and marked as shown below. I established accessories as shown below and set a plastic sign post Northeast, 2 feet.

(c)(d)(e) Plan view of corner with ties to at least 4 witness monuments. If in disagreement with previously established corner, show the distances between the two corners and also indicate the ties to the disputed.



NOT TO SCALE

(i) I, Jeffrey W. Austin, Registered Land Surveyor S-1885, hereby certify that the corner location on this record was determined by me or under my direction and control and that this U.S. Public Land Survey Monument Record is correct and complete to the best of my knowledge and belief.

Signature

Date 1-20-2000



INDEX NO. R-23

3808240020