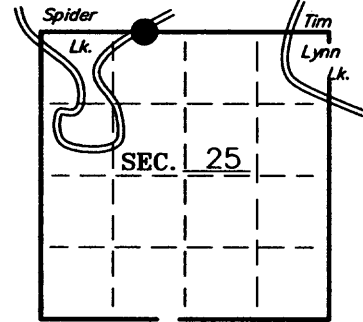


U. S. PUBLIC LAND SURVEY MONUMENT RECORD

Note: This form is intended and designed to fulfill all requirements of Wisconsin Administrative Code—Chapter A-E 7.08 U. S. Public Land Survey Monument Record (3)(a)(b)(c)(d)(e)(f)(g)(h)(i). An additional sheet may be added if necessary to conform with said requirements.

(a) CORNER LOCATION: State Plane Coordinates
 M.C. corner of Sec. 25 X ---
 Township 38 North Y ---
 Range 8 East Datum Base ---
 Town Newbold County of Oneida



(b) HISTORY OF ORIGINAL CORNER ESTABLISHMENT:
 Original Surveyor: Alexander Anderson
 Date of Survey: Commenced July 10, 1863
 Completed July 21, 1863

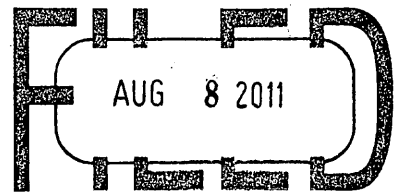
Original B.T.'S

W. Pine 15 S5°W 56 links
 Tamarack 8 S53°E 100 links

(b)(f)(g)(h) Description of monument found at this corner and if it was accepted—state all evidence (material—testimonial—occupation—plats—records—other monuments) used as a basis for accepting. If not accepted or if nothing was found state evidence used as basis for establishing location. If reestablished through lost corner proportionate methods indicate all monuments—distances and directions used to establish. Indicate type of monument and sign post found or set.

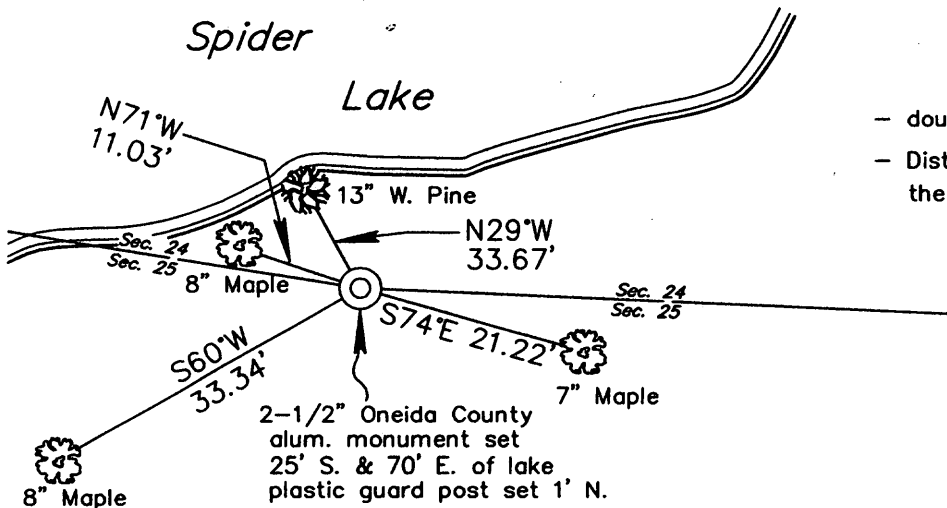
SEE SHEET 2 of 2 SHEETS

REGISTER OF DEEDS OFFICE
 ONEIDA COUNTY, WIS.



At _____ O'Clock _____ M
 THOMAS H. LEIGHTON
 REGISTER OF DEEDS

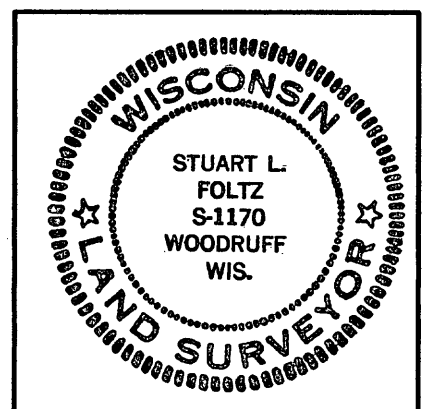
(c)(d)(e) Plan view of corner with ties to at least 4 witness monuments. If in disagreement with previously established corner—show the distances between the two corners and also indicate the ties to the disputed.



- double-blazed all B.T.'s.
- Dist.'s measured to alum. nails set in the side of each bearing tree.

(i) I Stuart L. Foltz S-1170
 hereby certify that the corner location on this record was determined by me or under my direction and control and that this U.S. Public Land Survey Monument Record is correct and complete to the best of my knowledge and belief.

Stuart L. Foltz
 Signature Foltz and Associates, Inc. Date 7/25/2011



INDEX NO. R 22-23

U. S. PUBLIC LAND SURVEY MONUMENT RECORD

1914: D.H. Vaughan recovered the original bearing trees for the Meander Corner on the west shore of Tim Lynn Lake and set a new post. Vaughan measured westerly 40.77 chains along a random line, and fell 1.76 chains south of the original M.C. on Spider Lake, identified by the original Tamarack bearing tree (dead) and the burned stump of the original Pine bearing tree. Vaughan set a new post and made a new bearing tree: W Pine 17 S30W 97 $\frac{1}{4}$. Vaughan states that his measurement of 40.77 chains between these two Meander Corners vs. the original distance of 39.11 chains is an overrun of 1.66 chains. Vaughan proportioned the overrun and set the N $\frac{1}{4}$ of Sec. 25 on true line 26.81 $\frac{1}{4}$ chains west of the Meander Corner on Tim Lynn Lake. Vaughan also set a 1/8th post 6.02 chains west of the Meander Corner on Tim Lynn Lake.

1938: Vernon Maine went to the original Meander Corner on the east side of Spider Lake between Secs. 24 and 25, identified by the stump of the original White Pine bearing tree, the stub of the original Tamarack bearing tree, and the stump of Vaughan's White Pine bearing tree. Maine found Vaughan's old stake, set a new tamarack stake, and stated "Nothing here for new B.T.s". Maine measured east 12.97 chains from the Meander Corner on the east side of Spider Lake and fell .518 chains north of Vaughan's $\frac{1}{4}$ stake and Tamarack bearing tree. Maine then continued "East from foregoing $\frac{1}{4}$ stk 180 $^{\circ}$ 00 from true line" and at 20.86 chains fell .30 south of Vaughan's 1/8th stake identified by stumps of Vaughan's bearing trees. Maine's measurement of 12.97 chains from the original Meander Corner on the east side of Spider lake to Vaughan's proportioned $\frac{1}{4}$ Corner is almost 1 chain shorter than Vaughan's measurement of 13.95 $\frac{1}{4}$ chains, indicating that Vaughan may have made a 1-chain error in his measurement. Maine's measurement between the two original Meander Corners was 39.83 chains, vs. the original distance of 39.11 chains and Vaughan's measurement of 40.77 chains. Maine thought that Vaughan's $\frac{1}{4}$ Corner was not on true line and .69 chains too far west, so he reset Vaughan's $\frac{1}{4}$ stake on the true line 13.66 chains east of the Meander Corner on Spider Lake. Maine also reset Vaughan's 1/8th stake on the true line 33.84 chains east of the Meander Corner on Spider Lake.

1957: Ivan Branham measured 39.78 chains from the Meander Corner on the east side of Spider Lake to the Meander Corner on the west side of Tim Lynn Lake. Branham found Maine's $\frac{1}{4}$ Corner at a distance of 13.66 chains east of the Meander Corner on the east side of Spider Lake, and another scribed $\frac{1}{4}$ with bearing trees 0.71 chains west and a little south of Maine's $\frac{1}{4}$ Corner. This might have been Vaughan's $\frac{1}{4}$ Corner from 1914. Since Branham's proportioning between the Meander Corners would have put the $\frac{1}{4}$ Corner 13.53 chains east of the Meander Corner of Spider Lake, Branham accepted Maine's $\frac{1}{4}$ Corner as correct.

1959: Lloyd Scott measured east 904.5 feet from the Meander Corner of the east side of Spider Lake to Maine's $\frac{1}{4}$ Corner, and 2630.7 feet between the Meander Corners on Spider lake and Tim Lynn Lake. Scott's notes show a post and well point with two Spruce bearing trees at a second unknown $\frac{1}{4}$ Corner 48 feet west and 11 feet south of Maine's $\frac{1}{4}$ Corner. Again, this might have been Vaughan's $\frac{1}{4}$ Corner from 1914. Scott's field notes also show a found iron rod on the east shore of Spider Lake 260.5 feet east of the Meander Corner and an unspecified distance north of the true line.

1983: LaVerne Mosher recovered and restored Vaughan's $\frac{1}{4}$ Corner. Maine's corner about 49 feet to the northeast was not located and Mosher believed it to have been destroyed by the bulldozing of a logging road. See Mosher's U.S. Public Survey Monument Record for more information. Mosher's recovery and restoration of this corner was compared with all record data and accepted as correct by Oneida County Surveyor Robert H. Winat on November 9, 1983.

1998: Devon Vanden Heuvel performed a survey of the East 750 Feet of Government Lot 2, Section 25, T38N, R8E, for the Wisconsin Department of Natural Resources. Vanden Heuvel found a 1 $\frac{1}{2}$ " iron pipe on the east shore of Spider Lake located about 596 feet west of Vaughan's $\frac{1}{4}$ Corner and accepted it as the Meander Corner. This 1 $\frac{1}{2}$ " iron pipe is apparently a perpetuation of the iron rod that Lloyd Scott showed on his field notes in 1959 as being located 260.5 feet east of Maine's Meander Corner, which was the original corner. Maine's measurement of 12.97 chains (856.02 feet) from the original Meander Corner on Spider Lake to Vaughan's $\frac{1}{4}$ Corner less Vanden Heuvel's measurement of 595.82 feet from his 1 $\frac{1}{2}$ " iron pipe is 260.2 feet, which confirms this.

1999: Jeff Austin recovered Mosher's restored $\frac{1}{4}$ Corner and set an Oneida County aluminum monument. See Austin's U.S. Public Survey Monument Record for more information.

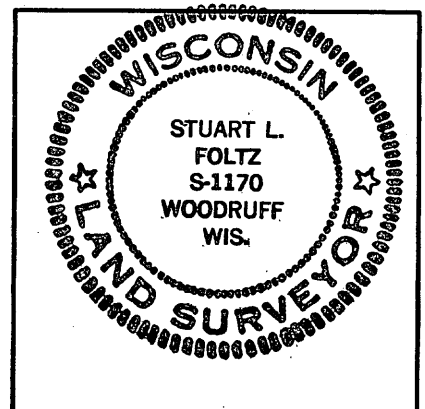
2000: Dennis Roberts performed a survey of Government Lot 2, Section 25, T38N, R8E, except the East 750 Feet thereof, and accepted the same 1 $\frac{1}{2}$ " iron pipe for the Meander Corner of the east side of Spider Lake that Devon Vanden Heuvel had used for his survey of the East 750 Feet of Government Lot 2 in 1998. This 1 $\frac{1}{2}$ " iron pipe is located about 260 feet to the east of the original Meander Corner location.

2001: Both the North $\frac{1}{4}$ Corner of Section 25 and the Meander Corner on the west shore of Tim Lynn Lake have now been restored and are monumented with Oneida County aluminum monuments. I believe both of these corners are the same corners Vaughan had in 1914. My distance between these two corners is 1773.84 feet. This compares favorably with Vaughan's measurement of 26.81 $\frac{1}{4}$ chains (1769.95 feet) in 1914 and Maine's measurement of 26.86 chains (1772.76 feet) in 1938. Since Vaughan set the now-restored $\frac{1}{4}$ Corner by single proportionate measurement on the line between the Meander Corners, I established a search location for the Meander Corner on the east side of Spider lake by projecting the section line from the Meander Corner on the west side of Tim Lynn Lake westerly through the $\frac{1}{4}$ Corner. I used Maine's distance of 12.97 chains (856.02 feet) for the westerly projection of the section line, which was confirmed by Branham's measurement of 854.7 feet in 1957 and Scott's measurement of 856.7 feet in 1959. No evidence of the Meander Corner was recovered at or near the search location.

2011: I set an Oneida County aluminum monument at the Meander Corner location and established accessories as described on the first sheet of this restoration form.

(i) I Stuart L. Foltz S-1170
 hereby certify that the corner location on this record was determined by me or under my direction and control and that this U.S. Public Land Survey Monument Record is correct and complete to the best of my knowledge and belief.

Stuart L. Foltz
 Signature Foltz and Associates, Inc. Date 7/25/2011



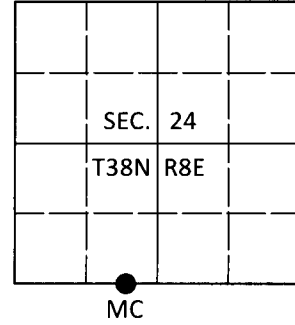
INDEX NO. R 22-23

U.S. PUBLIC LAND SURVEY MONUMENT RECORD

Note: This form is intended and designed to fulfill all requirements of Wisconsin Administrative Code, Chapter A-E 7.08 U.S. Public Land Survey Monument Record (3)(a-i).

(a) CORNER LOCATION
 Meander Cor. of Secs. 24 & 25
 Township 38 North
 Range 8 East of the 4th P.M.
 Town of Newbold
 County of Oneida

WISCRS - Oneida County
 N: 209,271.41 USft
 E: 256,849.79 USft
 Datum: NAD 83(2011)
 GNSS Method: RTN - Offset
 GNSS Control: WISCORS VRS



(b) HISTORY OF ORIGINAL CORNER ESTABLISHMENT

Original Surveyor:

Original Accessories:

Date of Survey Commenced:
 Completed:

See previous monument record(s)

(b)(f)(g)(h) Description of monument found at this corner and if it was accepted, state all evidence (material, testimonial, occupational, plats, records, other monuments) used as a basis for accepting. If not accepted or if nothing was found, state evidence used as basis for establishing location. If re-established through lost corner proportionate methods, indicate all monuments, distances and directions used to establish. Indicate type of monument and sign post found or set.

This is a perpetuation of the following monument record(s) that comprise a complete history of the corner:

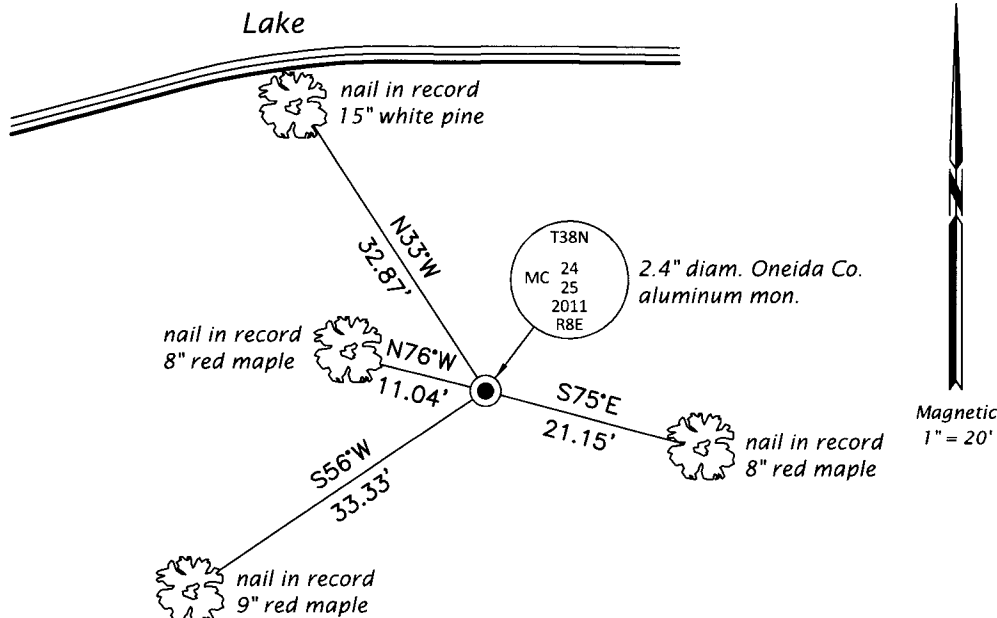
July 25, 2011: USPLS Monument Record No. 3808240024 by Stuart L. Foltz, PLS

July 24, 2019: I found and accepted the record monument, a 2.4" diam. aluminum pipe with a 3.3" diam. Oneida Co. aluminum cap projecting 3" above the ground surface. I found or established accessories as shown below. I found a white vinyl sign post bearing North, 1.0 ft.

The coordinate value shown has been verified by at least one of the following methods: 1) comparison to a previously GPS determined published value; 2) the value is the average of two or more GPS observations at a markedly different time; 3) one or more distances were measured back to the GPS observed corner from temporary GPS observed offset locations.

(c)(d)(e) Plan view of corner with ties to at least 4 witness monuments. If in disagreement with previously established corner, show the distances between the two corners and also indicate the ties to the disputed.

Spider



REGISTER OF DEEDS OFFICE
 ONEIDA COUNTY
 FILED

JAN 03 2020

KYLE J. FRANSON
 REGISTER OF DEEDS

(i) I, Jeffrey W. Austin, Professional Land Surveyor No. S-1885, hereby certify that the corner location on this record was determined by me or under my direction and control and that this U.S. Public Land Survey Monument Record is correct and complete to the best of my knowledge and belief.

[Handwritten Signature]
 Signature

DEC 23, 2019
 Date