

U.S. PUBLIC LAND SURVEY MONUMENT RECORD

Note: This form is intended and designed to fulfill all requirements of Wisconsin Administrative Code, Chapter A-E 7.08 U.S. Public Land Survey Monument Record (3) (a) (b) (c) (d) (e) (f) (g) (h) (i). An additional sheet may be added if necessary to conform with said requirements.

(a) Corner location: Township 38 North Corner: on West line of Section 19

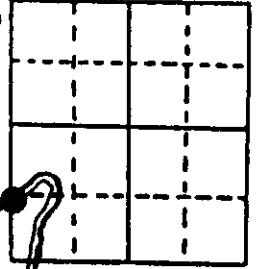
Section 19 Range 9 East Original Surveyor: Hiram C. Fellows

Town/City/Village Sugar Camp

Original B.T.'s: 6" Tam N71°E 17 lks
7" Tam N42°W 29 lks

County Oneida

Original Survey Date: May 1859

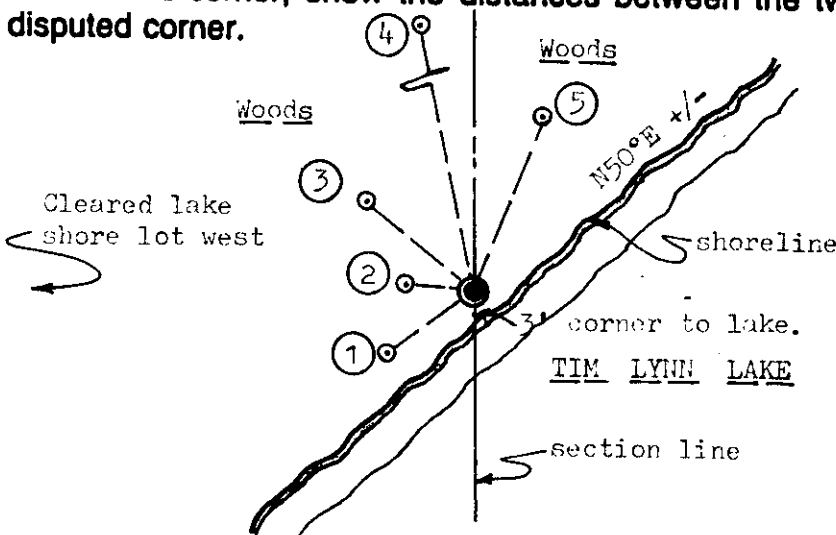


● Location

(b) (f) (g) (h) Description of monument found at this corner and if it was accepted, state all evidence (material, testimonial, occupational, plats, records, other monuments) used as a basis for accepting. If not accepted or if nothing was found, state evidence used as basis for establishing location. If reestablished through lost corner proportionate methods, indicate all monuments, distances and directions used to establish. Indicate type of monument found or set and sign post.

To locate this corner on North shore of Tim Lynn Lake, I first compassed a line South from the West 1/4 corner of Section 19 which I had previously found and referenced, to the lake and searched for record evidence. All original GLO survey corner evidence is now obliterated or of unreliable condition. In 1956, Kowalke set an iron pipe and wood marker post nearby as a witness MC on the west line of Section 19 and the North shore of Tim Lynn Lake; and he marked BTs a 15" Pw N12°E 24.0' and a 13" Oak N80°W 10.4', which I found and used for new ties below. At the corner location from the found Kowalke BTs, his iron pipe monument could not be found nor indicated by electronic metal locator, so upon carefully removing marsh grass sodding, and scalping soil with a trowel, I recovered the point of an old 2"x3" wood stake and a clearly identified hole S25°E about 7" from the wood stake, which was obviously left when Kowalke's iron pipe monument had been pulled or removed previously. I also found the broken off top of the old wood stake flat in marsh grass NE of the wood stake point in ground. I therefore reset the corner location with a standard 2" dia. by 34" long Berntsen aluminum monument with stamped Oneida County cap and cast aluminum point to a depth of 30". I also set a standard white poly 'T' corner marker post 1' South of the corner monument. This corner recovery completed September 23, 1997; witnessed by T.A. Solberg, Inc. caretaker.

(c) (d) (e) Plan view of corner with ties to at least 4 witness monuments. If in disagreement with previously established corner, show the distances between the two corners and also indicate the ties to the disputed corner.



Witness Monument Ties:

- ① New BT 16" Or S55°W 16.75'.
- ② Record BT 18" Or N86°W 10.53'.
- ③ New BT 15" Or N50°W 21.75'.
- ④ New BT 9" Bw N12°W 51.74'.
- ⑤ Record BT 24" Pw N20°E 24.10' with 4" Bw growing out of the SE side of root crown.

Note: Face blaze scars are shut but plain on both record BTs.



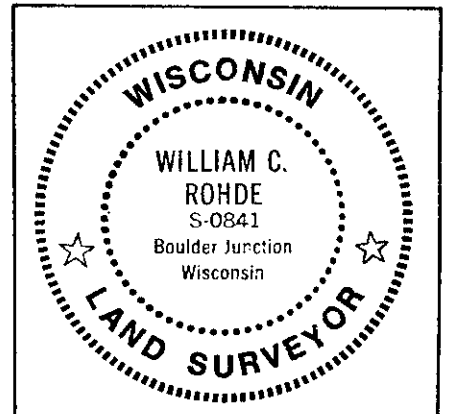
Scale: 1" = 30'

Unless otherwise indicated, all BT witness monument ties are to a 1/4" dia. by 2.5" long PK nail with 1.25" dia. steel washer set in unblazed right face bark; and a PK nail with 2" dia. steel washer stamped BT also set in unblazed front face bark of each BT at DBH. All previous corner recovery notes from Wisconsin DNR and/or Oneida County survey records.

(i) I, William C. Rohde, RLS 841
(type or print name) certify that the corner location on this record was determined by me or under my direction and control and that this U.S. Public Land Survey Monument Record is correct and complete to the best of my knowledge and belief.

William C. Rohde
Signature

9-29-97
Date



Index No. Q 81