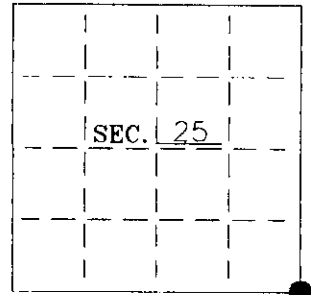


U. S. PUBLIC LAND SURVEY MONUMENT RECORD

Note: This form is intended and designed to fulfill all requirements of Wisconsin Administrative Code-Chapter A-E 7.08 U. S. Public Land Survey Monument Record (3)(a)(b)(c)(d)(e)(f)(g)(h)(i). An additional sheet may be added if necessary to conform with said requirements.

(a) CORNER LOCATION: Oneida County Coordinates
SE corner of Sec. 25 N 204226.3140
 Township 38 North E 260406.5129
 Range 8 East Datum Base Oneida County
 Town Newbold County of Oneida Coord. System



(b) HISTORY OF ORIGINAL CORNER ESTABLISHMENT:
 Original Surveyor: Alfred Millard
 Date of Survey: Commenced 1860
 Completed 1860

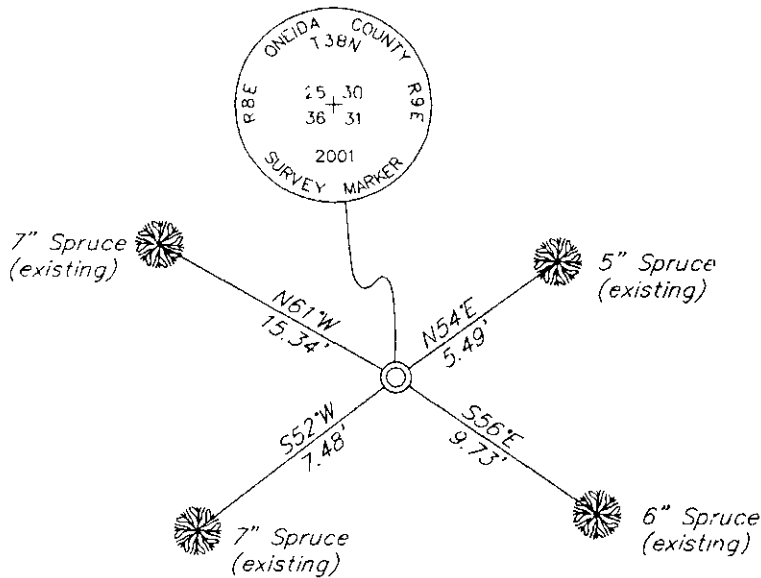
Original B.T.'S
 6" Spruce N80°W, 100lks
 10" Spruce, S35°E, 122 lks
 8" Spruce, S62°W, 52 lks

(b)(f)(g)(h) Description of monument found at this corner and if it was accepted—state all evidence (material—testimonial—occupation—plats—records—other monuments) used as a basis for accepting. If not accepted or if nothing was found state evidence used as basis for establishing location. If reestablished through lost corner proportionate methods indicate all monuments—distances and directions used to establish. Indicate type of monument and sign post found or set.

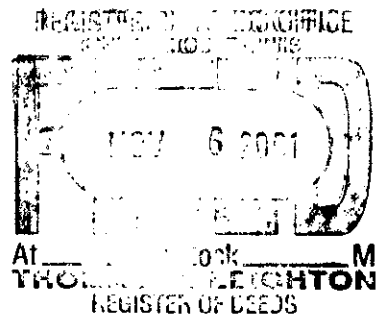
- 1914— D.H. Vaughan found original post and original west BT.
- 1952— Ivan Branham could not find the original corner and proportioned a location for the corner. See Oneida County Surveyors' map #B-2840.
- 1989— A map prepared by W.H. Stuth, shows section corner by Branham.
- 2001— I found and accepted Branham's 3-1/2" square wood post. I replaced the post with a Oneida County Aluminium Monument. See sketch below.

(c)(d)(e) Plan view of corner with ties to at least 4 witness monuments. If in disagreement with previously established corner—show the distances between the two corners and also indicate the ties to the disputed.

Set 2-1/2" x 5' Oneida County Aluminium Monument



- Set aluminum nail in each BT.
- Set carsonite post 1' east of corner.



INDEX NO. V 25

(i) I Charles E. Winkler S-1431 hereby certify that the corner location on this record was determined by me or under my direction and control and that this U.S. Public Land Survey Monument Record is correct and complete to the best of my knowledge and belief.

Charles E. Winkler 10/14/2001
 Signature Foltz and Associates, Inc. Date

3808250000