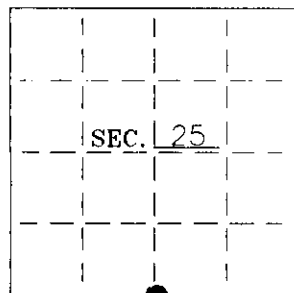


U. S. PUBLIC LAND SURVEY MONUMENT RECORD

Note: This form is intended and designed to fulfill all requirements of Wisconsin Administrative Code—Chapter A-E 7.08 U. S. Public Land Survey Monument Record (3)(a)(b)(c)(d)(e)(f)(g)(h)(i). An additional sheet may be added if necessary to conform with said requirements.

(a) CORNER LOCATION: Oneida County Coordinates
S1/4 corner of Sec. 25 N 204303.6078
 Township 38 North E 257766.3300
 Range 8 East Datum Base Oneida County
 Town Newbold County of Oneida Coord. System

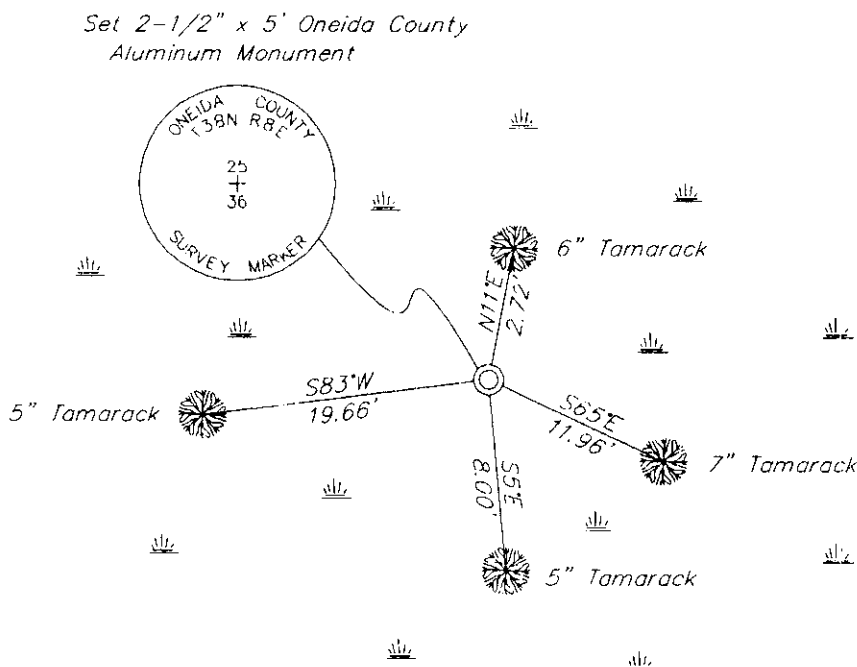


(b) HISTORY OF ORIGINAL CORNER ESTABLISHMENT:
 Original Surveyor: Alex Anderson Original B.T.'S
 Date of Survey: Commenced 1863 8" Tamarack, S20°E, 57 lks
 Completed 1863 No other trees near

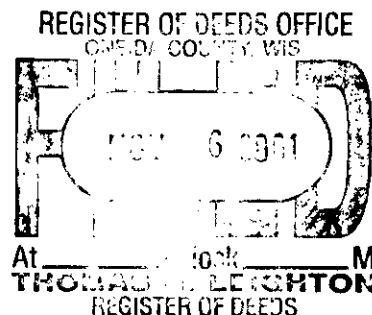
(b)(f)(g)(h) Description of monument found at this corner and if it was accepted—state all evidence (material—testimonial—occupation—plats—records—other monuments) used as a basis for accepting. If not accepted or if nothing was found state evidence used as basis for establishing location. If reestablished through lost corner proportionate methods indicate all monuments—distances and directions used to establish. Indicate type of monument and sign post found or set.

- 1952— Branham's notes state he proportioned the South 1/4 corner and set a wood post.
- 1959— On a map by E.F. Kowalke dated January 1959, he shows Branham's post and original Tamarack 8' S20°E, 37.6' at the South 1/4 position.
- 2001— I found and accepted Branham's 3-1/2" square wood post and replaced it with an Oneida County Aluminium Monument and made 4 new Bt's. See sketch below.

(c)(d)(e) Plan view of corner with ties to at least 4 witness monuments. If in disagreement with previously established corner—show the distances between the two corners and also indicate the ties to the disputed.



Set 2-1/2" x 5' Oneida County Aluminium Monument
 Set Carsonite post 1' East.
 Set aluminium nails in each Bt.



INDEX NO. V 23

(i) I Charles E. Winkler S-1431 hereby certify that the corner location on this record was determined by me or under my direction and control and that this U.S. Public Land Survey Monument Record is correct and complete to the best of my knowledge and belief.

Charles E. Winkler 10/11/2001
 Signature Foltz and Associates, Inc. Date

3808250020