

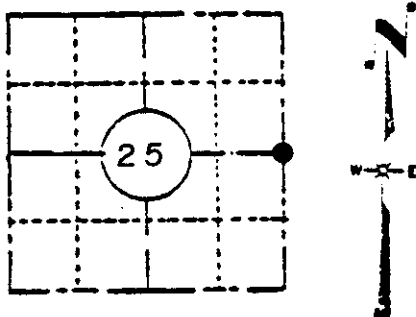
Stock No. 26273

U. S. PUBLIC LAND SURVEY MONUMENT RECORD

INSTRUCTIONS:

(a) Identify the corner by reference to the U.S. public land survey system.

EAST 1/4 CORNER
SECTION 25, T38N, R8E.
ONEIDA COUNTY,
WISCONSIN.



LOCATION SKETCH

(Location of landmark indicated by "●")

This record shall show the location of the corner and shall include all of the following nine elements (a through i).

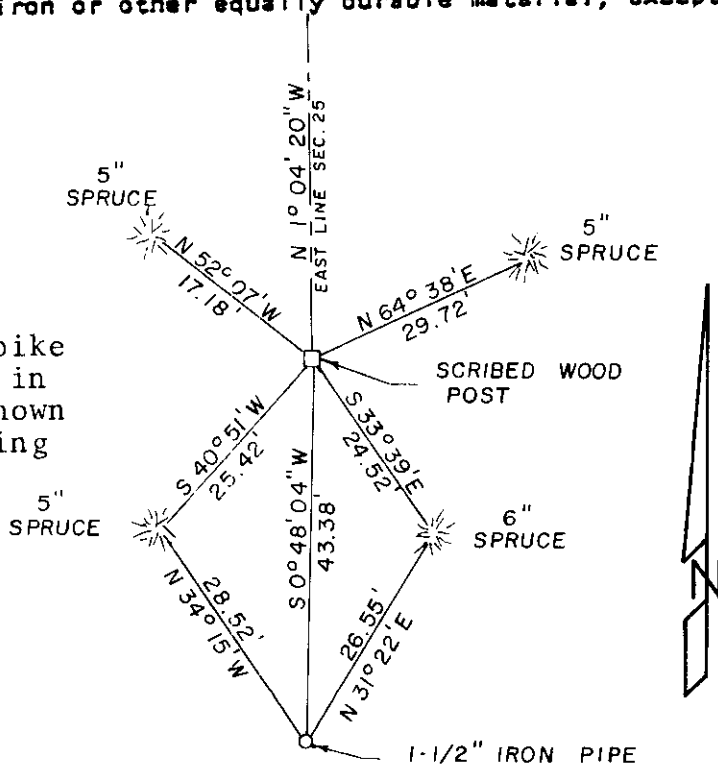
1. Post set per original gov't notes
Spruce 6 S 20 E 130
Spruce 6 S 10 W 175
2. Dorr surveyed Section 30-38-9 (1894?)
Spruce 2 1/2 N 89 1/2 E 41 1/2
Spruce 4 S 76 1/2 W 22
3. D.H. Vaughan-Nov. 26, 1914. "Went to East 1/4 P. Found post set by Dorr." (Excerpt from notes of D.H. Vaughan, same set of B.T. listed above).
4. I. Branham-1957-58. Copy of field notes indicates he surveyed Section 25, T38N, R8E.
5. E.F. Kowalke-1959?. Map dated Jan. 1959 indicated he surveyed East 1/2 of Section 25, T38N, R8E.
6. Sy M. Poskie-1976?. Surveyed Section 30, T38N, R9E. Set or found 1 1/2" iron pipe at corner (see below for particulars.)

(b) Describe any record evidence, monument evidence, occupational evidence, testimonial evidence or any other material evidence you considered, and whether the monument was found or placed.

September 8, 1983- On this date, I and Robert D. Engelman, R.L.S. ran traverse to this corner. Recovered intact a 4" square pointed cedar post scribed "S 1/4". Also recovered a 1 1/2" iron pipe 43.38' South of post; measured distance and bearing trees confirm this corner set or used by Sy Poskie. Measured distance from M.C. on East line (Tim Lynn Lake) of Section 25 to post closely matched Vaughan, Branham & Kowalke, hence wood post accepted as the corner. A 2" O.D.x30" iron pipe was driven along North face of post to perpetuate its position. Monument is old but in good shape.

(c) In the plan view drawing below, provide reference ties to at least 4 witness monuments, or, if the location is within a municipality, to at least 2 witness monuments. (Witness monuments shall be made of concrete, natural stone, iron or other equally durable material, except wood.) Describe witness monuments.

(d) Show a plan view drawing depicting the relevant monuments and reference ties which is sufficient in detail to enable accurate relocation of the corner monument if the corner monument is disturbed. Indicate north.



NOTE: All ties to head of 40d spike with metal 1 1/2" washer set in blaze of tree. Bearings shown were determined by occupying corner and turning angles with T-2 theodolite and are in conformity with CSM recorded with Oneida County Register of Deeds.

Compared with all record data and accepted as correct.

Robert H. Winat
Robert H. Winat, Oneida Co. Surv.
9 November 1983

1-1/2" IRON PIPE
3808 252000
T-25

(e) Describe any material discrepancy between the location of the corner as restored or reestablished and the location of that corner as previously restored or reestablished by distance and direction. Show the discrepancy on the plan view drawing under (d), above. Show the distances between the corner as previously restored or reestablished and (1) the corner as restored or reestablished, and (2) to at least 2 of the witness monuments shown on the drawing in (d), above.

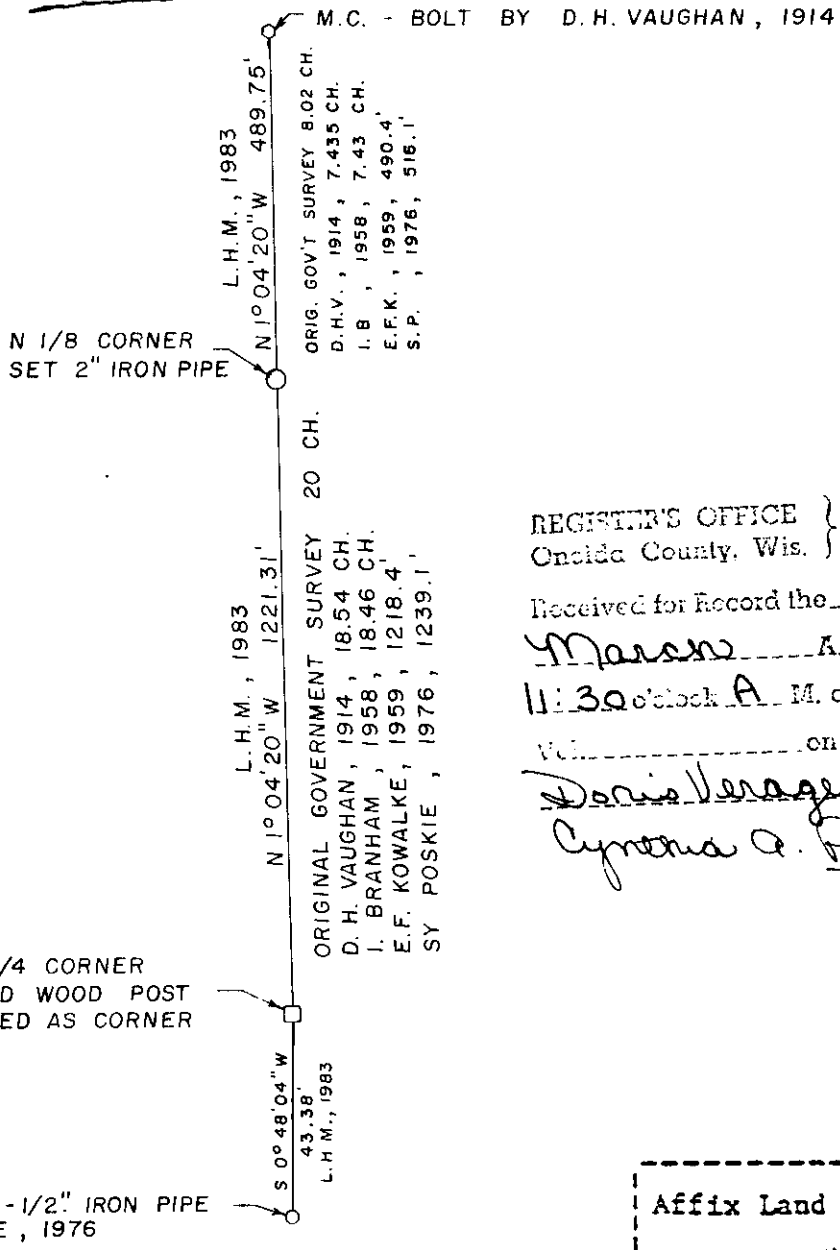
See G and H below.

(f) Was the corner restored through acceptance of (1) an obliterated evidence location, or, (2) a found perpetuated location?

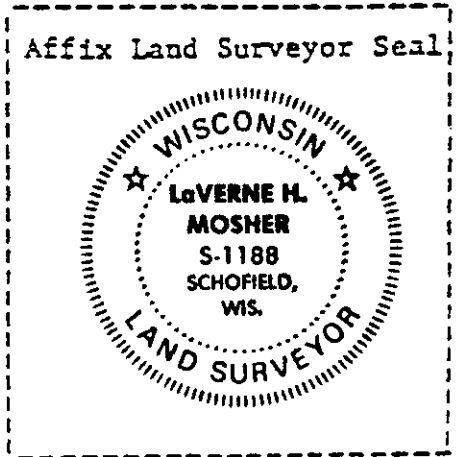
Found perpetuated location.

(g&h) Was the corner reestablished through lost corner proportionate methods? If so, show the method, including the directions and distances to other public land survey corners used as evidence or used for proportioning in determining the corner location?

TIM LYNN LAKE



REGISTRAR'S OFFICE }
 Oneida County, Wis. }
 Received for Record the 15 day of
March A.D. 1984 at
11:30 o'clock A.M. and recorded in
 Vol. _____ on page _____
Doris Verage Kuehn Register
Cynthia A. Pites Deputy



(i) I, LaVerne H. Mosher, R.L.S.
 (type or print name) certify that the corner location shown
 on this record was determined by me or under my direction and
 control and that this U.S. Public Land Survey Monument Record
 is correct and complete to the best of my knowledge and belief.

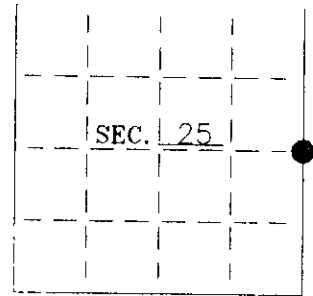
LaVerne H. Mosher Signature September 28, 1983 Date

LHM SURVEYING
 6006 HILGEMANN STREET
 SCHOFIELD, WI 54476

U.S. PUBLIC LAND SURVEY MONUMENT RECORD

Note: This form is intended and designed to fulfill all requirements of Wisconsin Administrative Code--Chapter A E 7.08 U. S. Public Land Survey Monument Record (3)(a)(b)(c)(d)(e)(f)(g)(h)(i). An additional sheet may be added if necessary to conform with said requirements.

(a) CORNER LOCATION: Oneida County Coordinates
E 1/4 corner of Sec. 25 N 206743.3763
 Township 38 North E 260418.2862
 Range 8 East Datum Base _____
 Town Newbold County of Oneida

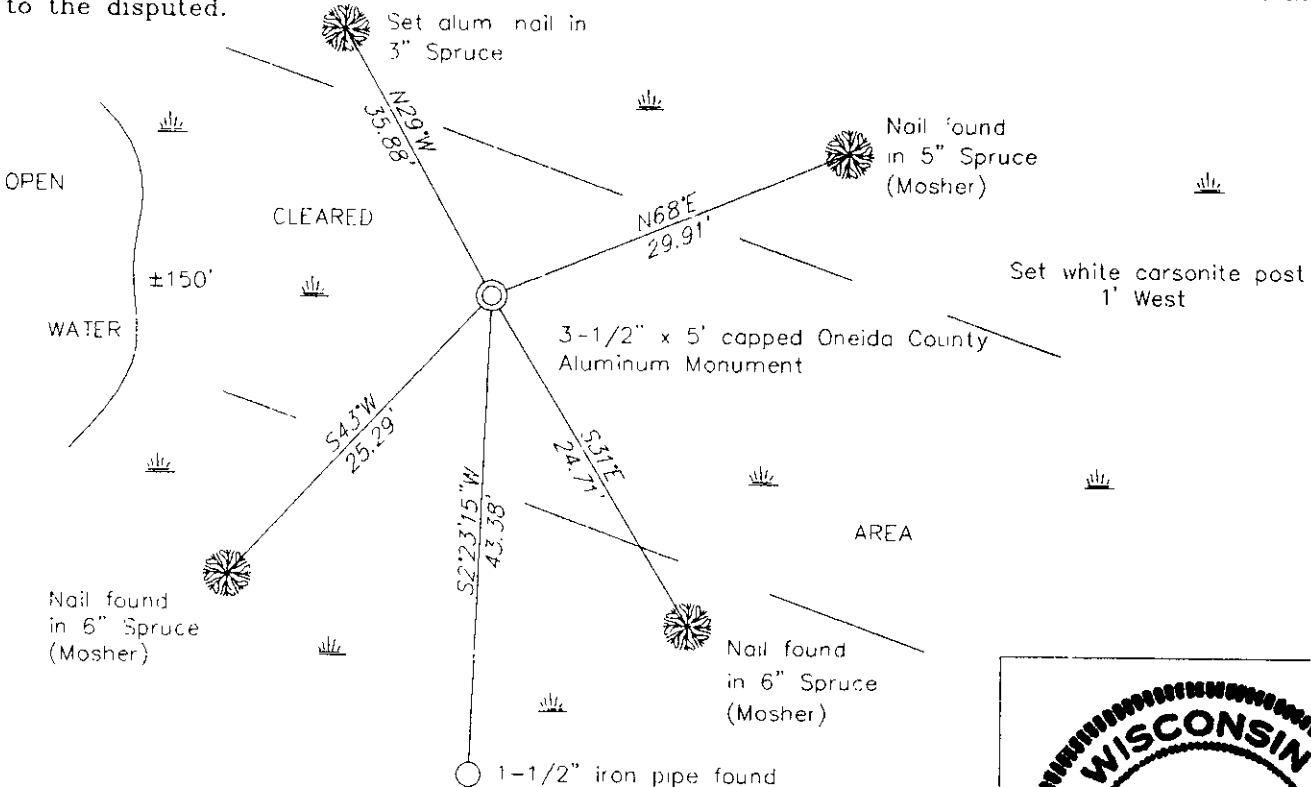


(b) HISTORY OF ORIGINAL CORNER ESTABLISHMENT:
 Original Surveyor: Alfred Millard Original B.T.'S
 Date of Survey: Commenced 1860 6" Spruce, S20°E, 130 lks
 Completed 1860 5" Spruce, S10°W, 175 lks

(b)(f)(g)(h) Description of monument found at this corner and if it was accepted--state all evidence (material--testimonial--occupation--plats--records--other monuments) used as a basis for accepting. If not accepted or if nothing was found state evidence used as basis for establishing location. If reestablished through lost corner proportionate methods indicate all monuments--distances and directions used to establish. Indicate type of monument and sign post found or set.

- 1952- I Branham, Oneida County Surveyor's Map #B2840 shows, "1/4 original and Vaughan's evidence" for the corner.
- 1976- M. Poskie, Oneida County Surveyor's Map #C617 shows he had a 1-1/2" iron pipe which appears to be at a proportioned location.
- 1983- L. Mosher recovered a 4" square pointed cedar post scribed "S 1/4". He also recovered a 1-1/2" iron pipe, S0°48'04"W, 43.38'. Mosher noted his measured distance from the South M.C. of Tim Lynn Lake to the wood post matched Vaughan and Branham's distance and accepted the wood post for the corner. See U.S. Public Land Survey Monument Record on file. He set 2"x30" iron pipe on north side of post.
- 2001- I found an old wood post with a 2" iron pipe on north side. I also found a 1-1/2" iron pipe south of the corner. I accepted and replaced the old wood post with an Oneida County Aluminum Monument for the corner. I also removed the 2" iron pipe north of the wood post. See sketch below.

(c)(d)(e) Plan view of corner with ties to at least 4 witness monuments. If in disagreement with previously established corner--show the distances between the two corners and also indicate the ties to the disputed.



(i) I Charles E. Winkler S-1431 hereby certify that the corner location on this record was determined by me or under my direction and control and that this U.S. Public Land Survey Monument Record is correct and complete to the best of my knowledge and belief.

Charles E. Winkler 10/29/2001
 Signature Foltz and Associates, Inc. Date



INDEX NO. T 25

3808.25 20 00