

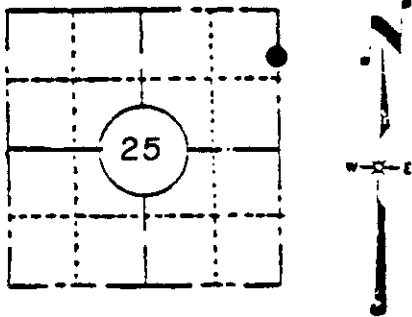
U. S. PUBLIC LAND SURVEY MONUMENT RECORD

INSTRUCTIONS:

This record shall show the location of the corner and shall include all of the following nine elements (a through i).

- a) Identify the corner by reference to the U.S. public land survey system.

MEANDER CORNER
(TIM LYNN LAKE)
EAST LINE SECTION 25,
T 38 N, R 8 E. ONEIDA CO.,
WISCONSIN.



LOCATION SKETCH

Location of landmark indicated by "●"

1. Wood post set per original gov't survey
Tamarack 10 S 20 W 73
Tamarack 6 S 51 E 47
2. D.H. Vaughan, 1914- "Went to East 1/4 P. Found post set by Dorr. Run N var 2 1/2° E. 2597 1/2 fell 1-7/8 W. of M.C. Found E. B.T. stump 4 feet high, marks O.K." stp of W tree. Set an iron bolt 2 feet long for post. Found a shortage of 2.04 1/2, proportioned same and set 1/8 P. an iron bolt." -Excerpt from notes by D.H. Vaughan, Nov. 26, 1914.
3. I. Branham, 1957-58- Copy of field notes indicates he surveyed Section 25, T38N, R8E.
4. E.F. Kowalke, 1959?- Map dated Jan. 1959 indicated he surveyed East 1/2 of Section 25, T38N, R8E.
5. Sy M. Poskie, 1976?- Surveyed Section 30, T38N, R9E. Set or found 1" iron pipe at corner (see below for particulars).

- b) Describe any record evidence, monument evidence, occupational evidence, testimonial evidence or any other material evidence you considered, and whether the monument was found or placed.

September 19, 1983- On this date, I and Robert D. Engelman, R.L.S. traversed to this corner. Recovered intact and in good condition a 1" iron bolt with 1 1/2" square head. Found no bearing trees but bolt was accepted as true corner since our measurement from bolt to wood post at E 1/4 (see tie sheet for that corner for particulars) was determined as 1711.06' which compares favorably with D.H. Vaughan's 25.97 1/2 chains. Also recovered intact a 1" iron pipe set or found by Sy Poskie, 1976 along with 2 bearing trees marked by Mr. Poskie. Pipe was situated 11.49', S 86° 14' 24" W of recovered bolt. Left bolt in place and marked same with 3" maple post to aid location.

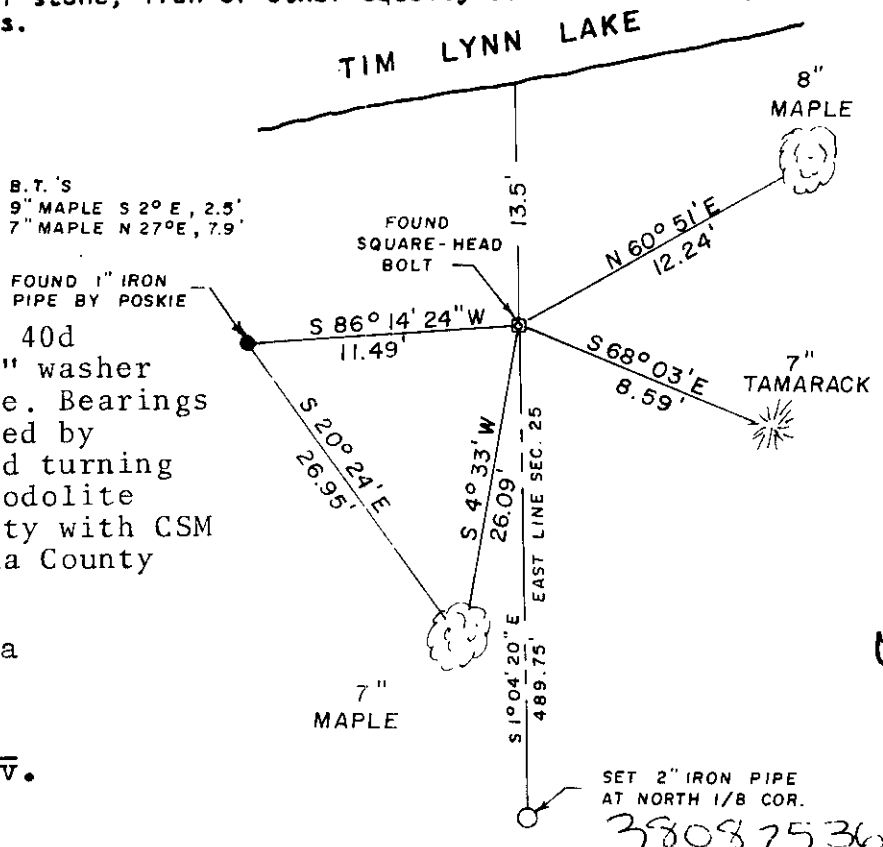
- c) In the plan view drawing below, provide reference ties to at least 4 witness monuments, or, if the location is within a municipality, to at least 2 witness monuments. (Witness monuments shall be made of concrete, natural stone, iron or other equally durable material, except wood.) Describe witness monuments.

- d) Show a plan view drawing depicting the relevant monuments and reference ties which is sufficient in detail to enable accurate relocation of the corner monument if the corner monument is disturbed. Indicate north.

NOTE: All ties to head of 40d spike with metal 1 1/2" washer set in blaze of tree. Bearings shown were determined by occupying corner and turning angles with T-2 Theodolite and are in conformity with CSM recorded with Oneida County Register of Deeds.

Compared with all record data and accepted as correct.

Robert H. Winat
Robert H. Winat, Oneida Co. Surv.
9 november 1983



5-25
3808 25 3600

(e) Describe any actual discrepancy between the location of the corner as restored or reestablished and the location of that corner as previously restored or reestablished by distance and direction. Show the discrepancy on the plan view drawing under (d), above. Show the distances between the corner as previously restored or reestablished and (1) the corner as restored or reestablished, and (2) to at least 2 of the witness monuments shown on the drawing in (d), above.

See "D" above.

(f) Was the corner restored through acceptance of (1) an obliterated evidence location, or, (2) a found perpetuated location?

Found perpetuated location.

(g&h) Was the corner reestablished through lost corner proportionate methods? If so, show the method, including the directions and distances to other public land survey corners used as evidence or used for proportioning in determining the corner location?

Not Applicable.

REGISTRAR'S OFFICE }
Oncida County, Wis. }

Received for Record the 15 day of

March A.D. 1984 at

11:30 o'clock A. M. and recorded in

Vol. _____ on page _____

Daniellee Kuehn Register

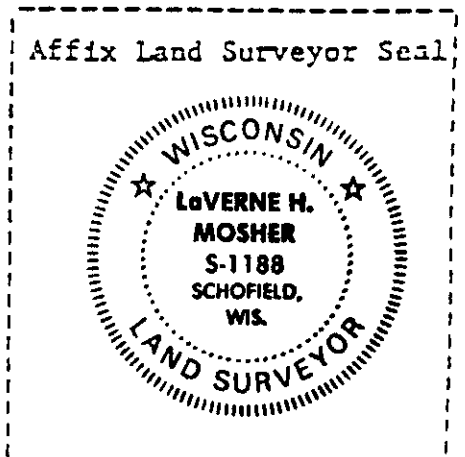
Cynthia A. Pitts Deputy

(i) I, LaVerne H. Mosher, R.L.S.
(type or print name) certify that the corner location shown on this record was determined by me or under my direction and control and that this U.S. Public Land Survey Monument Record is correct and complete to the best of my knowledge and belief.

LaVerne H. Mosher
Signature

September 29, 1983
Date

LHM SURVEYING
6006 HILGEMA STREET
SCHOFIELD, WIS. 5

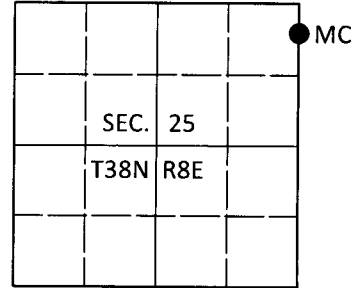


U.S. PUBLIC LAND SURVEY MONUMENT RECORD

Note: This form is intended and designed to fulfill all requirements of Wisconsin Administrative Code, Chapter A-E 7.08 U.S. Public Land Survey Monument Record (3)(a-i).

(a) CORNER LOCATION
 Meander Cor. of Secs. 25 & 30
 Township 38 North
 Range 8 & 9 East of the 4th P.M.
 Town of Newbold & Sugar Camp
 County of Oneida

WISCRS - Oneida County
 N: 208,454.26 USft
 E: 260,433.63 USft
 Datum: NAD 83(2011)
 GNSS Method: RTN - Direct
 GNSS Control: WISCORS VRS



(b) HISTORY OF ORIGINAL CORNER ESTABLISHMENT

Original Surveyor: _____ Original Accessories: _____
 Date of Survey Commenced: _____ See previous USPLS Monument Record
 Completed: _____

(b)(f)(g)(h) Description of monument found at this corner and if it was accepted, state all evidence (material, testimonial, occupational, plats, records, other monuments) used as a basis for accepting. If not accepted or if nothing was found, state evidence used as basis for establishing location. If re-established through lost corner proportionate methods, indicate all monuments, distances and directions used to establish. Indicate type of monument and sign post found or set.

This is a perpetuation of a previous USPLS Monument Record by LaVerne H. Mosher, RLS dated September 29, 1983 and filed in the office of the Oneida County Register of Deeds. A complete history of the corner can be found on the previous monument record. I accept the previous location as a true and faithful perpetuation or reestablishment of the original corner location and further perpetuate it as follows.

October 2, 2018: I found and accepted the record monument, a 3/4" diam., 24" long bolt with a square top. In place of the bolt, I set a 1" diam., 30" long aluminum pipe with a 2-1/2" diam. Oneida Co. aluminum cap flush with the ground surface. I set a blue/black DEEP-1 magnet adjacent to the monument. The record bearing trees at 12.24' and 26.09' are standing dead. I found or established accessories as shown below. I set a white vinyl sign post bearing North, 0.6 ft.

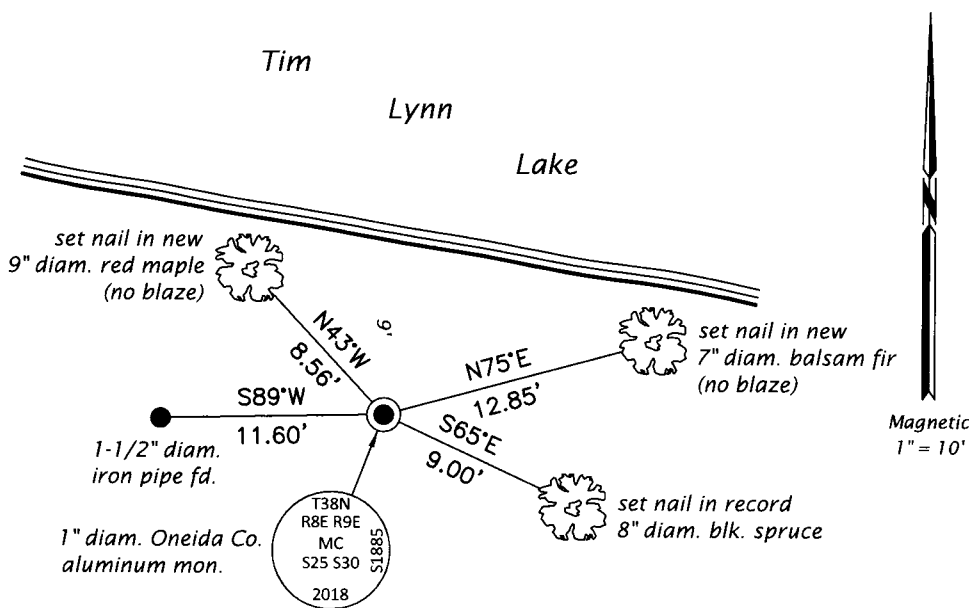
The coordinate value shown has been verified by at least one of the following methods: 1) comparison to a previously GPS determined published value; 2) the value is the average of two or more GPS observations at a markedly different time; 3) one or more distances were measured back to the GPS observed corner from temporary GPS observed offset locations.

REGISTER OF DEEDS OFFICE
 ONEIDA COUNTY
 FILED

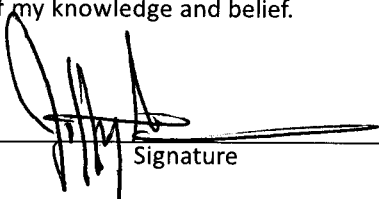
DEC 17 2018

KYLE J. FRANSON
 REGISTER OF DEEDS

(c)(d)(e) Plan view of corner with ties to at least 4 witness monuments. If in disagreement with previously established corner, show the distances between the two corners and also indicate the ties to the disputed.



(i) I, Jeffrey W. Austin, Professional Land Surveyor No. S-1885, hereby certify that the corner location on this record was determined by me or under my direction and control and that this U.S. Public Land Survey Monument Record is correct and complete to the best of my knowledge and belief.


 Signature

3 DEC 2018
 Date