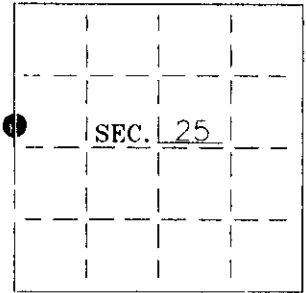


U. S. PUBLIC LAND SURVEY MONUMENT RECORD

Note: This form is intended and designed to fulfill all requirements of Wisconsin Administrative Code—Chapter A-E 7.08 U. S. Public Land Survey Monument Record (3)(a)(b)(c)(d)(e)(f)(g)(h)(i). An additional sheet may be added if necessary to conform with said requirements.

(a) CORNER LOCATION: Oneida County Coordinates
 Witness W1/4 corner of Sec. 25 N 207076.9901
 Township 38 North E 254844.7141
 Range 8 East Datum Base --
 Town Newbold County of Oneida



(b) HISTORY OF ORIGINAL CORNER ESTABLISHMENT:
 Original Surveyor: Alex Anderson
 Date of Survey: Commenced 1863
 Completed 1863

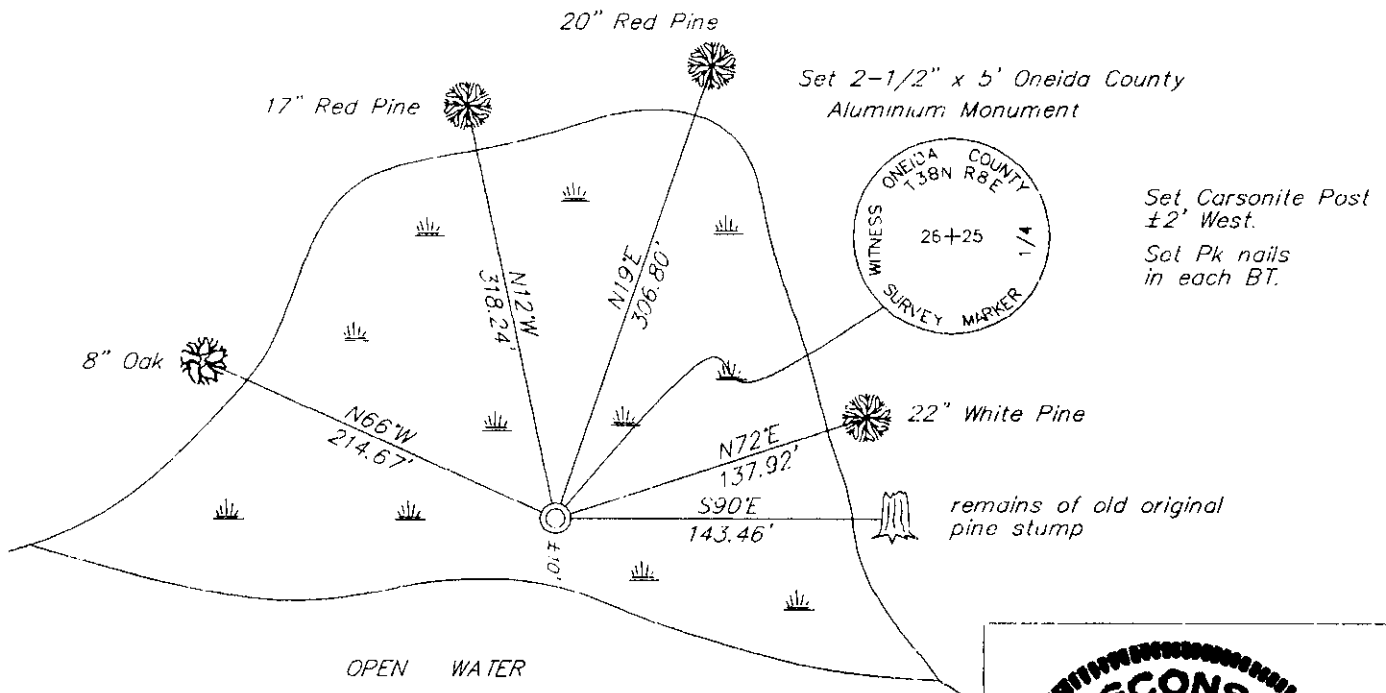
Original B.T.'S
 Set witness corner 0.62 ch. N. of 1/4 corner.
 15" Yellow Pine N87°E, 218lks (143.88')
 No other trees near by

(b)(f)(g)(h) Description of monument found at this corner and if it was accepted—state all evidence (material—testimonial—occupation—plats—records—other monuments) used as a basis for accepting. If not accepted or if nothing was found state evidence used as basis for establishing location. If reestablished through lost corner proportionate methods indicate all monuments—distances and directions used to establish. Indicate type of monument and sign post found or set.

1952— Ivan Branham, Oneida County Surveyors' map #B2840 shows a witness corner .61 chains North of the West 1/4 corner and he also shows an original BT stump.

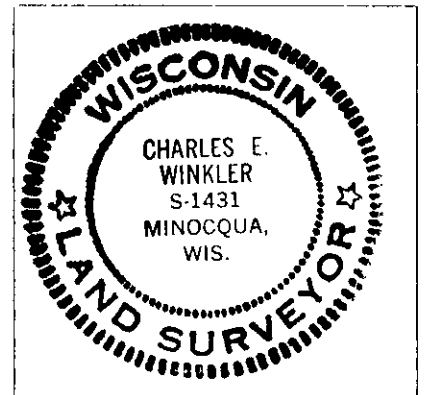
2001-- I did a search for the witness corner in a floating bog. I found no evidence of Branham's corner. I set an Oneida County Aluminium Monument at 40.92' (0.62 chains) north of computed 1/4 location. I found the remains of the original pine stump at N90°E, 143.46'. See sketch below.

(c)(d)(e) Plan view of corner with ties to at least 4 witness monuments. If in disagreement with previously established corner—show the distances between the two corners and also indicate the ties to the disputed.



(i) I Charles E. Winkler S-1431 hereby certify that the corner location on this record was determined by me or under my direction and control and that this U.S. Public Land Survey Monument Record is correct and complete to the best of my knowledge and belief.

Charles E. Winkler 10/11/2001
 Signature Foltz and Associates, Inc. Date



INDEX NO. T-21

3808262000