

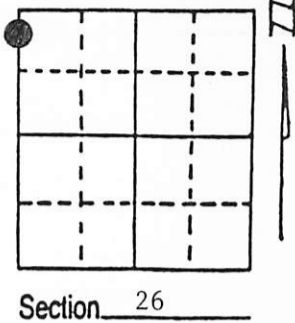
U.S. PUBLIC LAND SURVEY MONUMENT RECORD

Note: This form is intended and designed to fulfill all requirements of Wisconsin Administrative Code, Chapter A-E 7.08 U.S. Public Land Survey Monument Record (3) (a) (b) (c) (d) (e) (f) (g) (h) (i). An additional sheet may be added if necessary to conform with said requirements.

(a) Corner location: Township 38 North
 Range 8 East/West

Town/City/Village Newbold

County Oneida



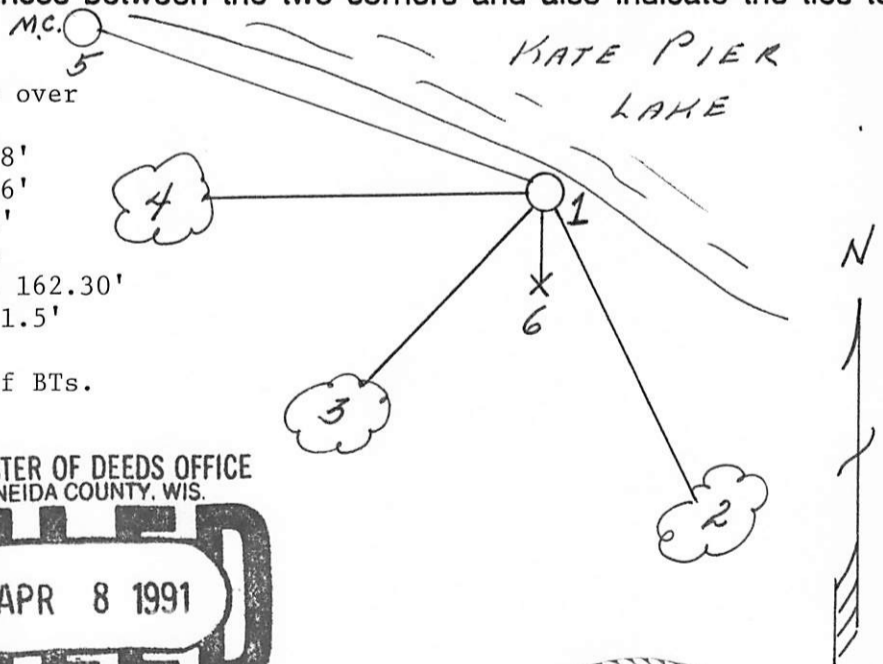
(b) (f) (g) (h) Description of monument found at this corner and if it was accepted, state all evidence (material, testimonial, occupational, plats, records, other monuments) used as a basis for accepting. If not accepted or if nothing was found, state evidence used as basis for establishing location. If reestablished through lost corner proportionate methods, indicate all monuments, distances and directions used to establish. Indicate type of monument found or set and sign post.

- 1863 - Alexander Anderson established this Meander Corner at 78.67 chains on south shore of lake, set a wood post for M.C. and two BTs:
 12" W. Pine, S20°E, 47 Links 12" W. Pine, S35°W, 27 Links
- 1950's - DNR (Nelson, McDonald & Mentz) found evidence of original corner and set a 1" x 48" iron pipe while working Section 23.
- 1978 - William Immich found DNR's iron pipe and used it to work Government Lot #1, Section 27.
- 3/28/1991 - Milo E. Stefan found 1" x 48" iron pipe 8" above water line with both original Pine BT stumps in place. I placed a 2" x 36" aluminum monument over iron pipe, made new BTs and set plastic sign post.

(c) (d) (e) Plan view of corner with ties to at least 4 witness monuments. If in disagreement with previously established corner, show the distances between the two corners and also indicate the ties to the disputed corner.

- 1) 2" x 36" aluminum monument over 1" x 48" iron pipe
- 2) 5" White Pine, S12°E, 52.78'
- 3) 4" White Pine, S32°W, 17.86'
- 4) 10" Red Maple, West, 35.60'
- 5) M.C. on West shore between Sections 22 and 27, N48°W, 162.30'
- 6) Plastic sign post, South, 1.5'

Distance to nail in side of BTs.
 Stump blaze scribed "BT".



REGISTER OF DEEDS OFFICE
 ONEIDA COUNTY, WIS.
FILED
 APR 8 1991
 At _____ O'Clock _____ M
THOMAS H. LEIGHTON
 REGISTER OF DEEDS



(i) I, Milo E. Stefan
 (type or print name) certify that the corner location on this record was determined by me or under my direction and control and that this U.S. Public Land Survey Monument Record is correct and complete to the best of my knowledge and belief.

Milo E. Stefan
 Signature

April 3, 1991
 Date

3808273900
 Stamp

U.S. PUBLIC LAND SURVEY MONUMENT RECORD

Note: This form is intended and designed to fulfill all requirements of Wisconsin Administrative Code, Chapter A-E 7.08 U.S. Public Land Survey Monument Record (3)(a-i).

(a) CORNER LOCATION
 Meander Cor. of Secs. 26 & 27
 Township 38 North
 Range 8 East of the 4th P.M.
 Town of Newbold
 County of Oneida

WISCRS - Oneida County
 N: 209,481.33 USft
 E: 249,596.08 USft
 Datum: NAD 83(2011) ep. 2010.00
 GNSS Method: RTN - Direct
 GNSS Control: WISCORS VRS

			MC #18

Sec. 27, T. 38 N., R. 8 E.

(b)(f)(g)(h) Description of monument found at this corner and if it was accepted, state all evidence (material, testimonial, occupational, plats, records, other monuments) used as a basis for accepting. If not accepted or if nothing was found, state evidence used as basis for establishing location. If re-established through lost corner proportionate methods, indicate all monuments, distances and directions used to establish. Indicate type of monument and sign post found or set.

This record is a perpetuation of the following land corner document(s):

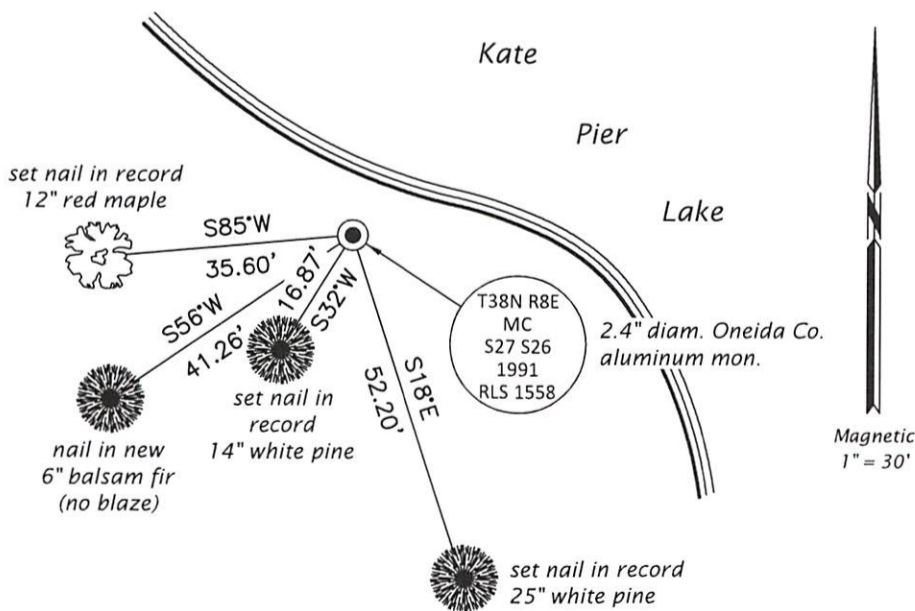
April 3, 1991: USPLS Monument Record by Milo E. Stefan, filed in Oneida County

A complete history of the corner can be found on the previous land corner document(s). I accept the record activity as a true and faithful perpetuation or reestablishment of the original corner location and further perpetuate it as described below.

Jan. 17, 2022: I found and accepted the record monument, a 2.4" diam. aluminum pipe, firmly set, with a 3.3" diam. Oneida Co. aluminum cap projecting 3" above the ground surface. I found or established accessories as indicated below. I found a white vinyl sign post bearing South, 1.5 ft.

The coordinate value shown has been verified by averaging two or more GNSS observations at markedly different times.

(c)(d)(e) Plan view of corner with ties to at least 4 witness monuments. If in disagreement with previously established corner, show the distances between the two corners and also indicate the ties to the disputed.



REGISTER OF DEEDS OFFICE
 ONEIDA COUNTY
 FILED

MAR 07 2022

KYLE J. FRANSON
 REGISTER OF DEEDS

(i) I, Jeffrey W. Austin, Professional Land Surveyor No. S-1885, hereby certify that the corner location on this record was determined by me or under my direction and control and that this U.S. Public Land Survey Monument Record is correct and complete to the best of my knowledge and belief.

[Handwritten Signature]
 Signature

FEB, 22, 2022
 Date