

# U.S. PUBLIC LAND SURVEY MONUMENT RECORD

REGISTER OF DEEDS OFFICE  
ONEIDA COUNTY  
FILED

APR 17 2017

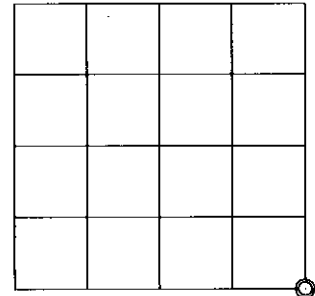
Note: This form is intended and designed to fulfill all requirements of the Wisconsin Administrative Code, Chapter A-E 7.08 U.S. Public Land Monument Record (3)(a)(b)(c)(d)(e)(f)(g)(h)(i). An additional sheet may be added if necessary to conform with said requirements.

(a) CORNER LOCATION: WISCRS - Oneida County  
 Southeast Corner of Section 28 North: 204425.499 USft  
 Township 38 North East: 244554.623 USft  
 Range 8 East Latitude: 45°44'48.05573" N  
 Town of Newbold Longitude: 89°29'14.77971" W  
 County of Oneida Datum: NAD 83(2011)  
 GNSS Method: RTK - Direct  
 GNSS Control: WISCORS VRS  
 Record North: 204425.55 USft  
 Record East: 244554.69 USft  
 GNSS Method: NAD 83(1991)

AT \_\_\_\_\_ O'CLOCK \_\_\_\_\_ M  
 KYLE J. FRANSON  
 REGISTER OF DEEDS

(RECORDING AREA)

SECTION 28



(b) HISTORY OF ORIGINAL CORNER ESTABLISHMENT

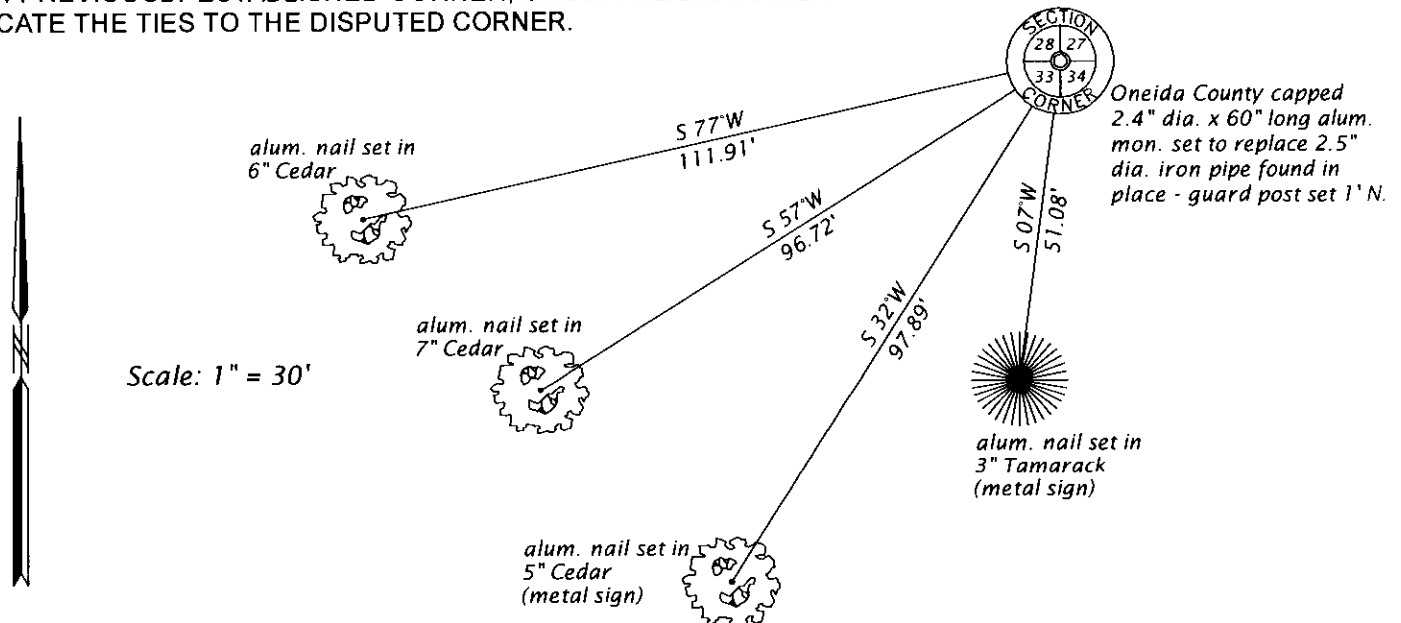
Original Surveyor: Alexander Anderson  
 Date of Survey: Commenced July 10th, 1863  
 Completed July 21st, 1863  
 Original B.T.'S: Tamarack 8" N 27°W 10 lks.  
 Tamarack 10" N 41°E 11 lks.

(f)(g)(h) DESCRIPTION OF MONUMENT FOUND AT THIS CORNER AND IF IT WAS ACCEPTED, STATE ALL EVIDENCE (MATERIAL, TESTIMONIAL, OCCUPATIONAL, PLATS, RECORDS, OTHER MONUMENTS) USED AS A BASIS FOR ESTABLISHING LOCATION. IF NOT ACCEPTED OR IF NOTHING WAS FOUND, STATE EVIDENCE USED AS BASIS FOR ESTABLISHING LOCATION. IF REESTABLISHED THROUGH LOST CORNER PROPORTIONATE METHODS, INDICATE ALL MONUMENTS, DISTANCES AND DIRECTIONS USED TO ESTABLISH. INDICATE TYPE OF MONUMENT AND SIGN POST FOUND OR SET.

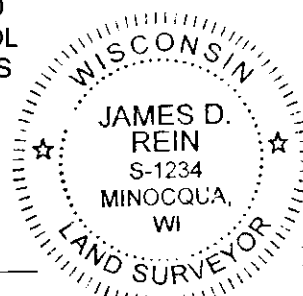
May 4, 1906 - D. H. Vaughan, County Surveyor, (Old Field Book 5, page 55) in Section 28, "found original post and 1 B.T."  
 July 2, 1917 - D. H. Vaughan, County Surveyor, (Old Field Book 8, page 77) in Section 28, East from S 1/4P. Var- 3 1/2 E, 40.10ch. fell .58 N. of SE Cor. SW tree ok. There is too much frost or ice to set new post. Tobra Shak said would put in a good cedar post.  
 April 4, 1921 - D. H. Vaughan, County Surveyor, (Old Field Book 9, page 22, also in Old Field Book 62, page 133) in Section 33, NE cor cedar post and stub of orig. tree. {CONTINUED ON REVERSE SIDE}

The coordinate value shown has been verified by at least one of the following methods: 1) comparison to a previously GPS determined published value; 2) the value is the average of two or more GPS observations at a markedly different time; 3) one or more distances were measured back to the GPS observed corner from temporary GPS observed offset locations.

(c)(d)(e) PLAN VIEW OF CORNER WITH TIES TO AT LEAST 4 WITNESS MONUMENTS. IF IN DISAGREEMENT WITH PREVIOUSLY ESTABLISHED CORNER, SHOW THE DISTANCE BETWEEN THE TWO CORNERS AND ALSO INDICATE THE TIES TO THE DISPUTED CORNER.



(i) I, JAMES D. REIN, PROFESSIONAL LAND SURVEYOR NO. S-1234 HEREBY CERTIFY THAT THE CORNER LOCATION ON THIS RECORD WAS DETERMINED BY ME OR UNDER MY DIRECTION AND CONTROL AND THAT THIS U.S. PUBLIC LAND SURVEY MONUMENT RECORD IS CORRECT AND COMPLETE TO THE BEST OF MY KNOWLEDGE AND



*[Handwritten Signature]*

4-10-17  
 DATE

INDEX NO. V-13  
 3808280000

OVER →

---

{CONTINUED FROM REVERSE SIDE}

March 1947 - F. R. Wincentsen, Prof. Eng. Genisot Engineering Co. (map of survey filed as B5486) identifies corner as "Found Orig. B.T.)

August 28, 1948 - W. M. Rowinski, Prof. Eng. (map of survey filed as B1850) identifies corner as "Original Gov. Sec. Corner".

July 28, 2009 - Eugene C. Uttech, Registered Land Surveyor No. S-1451, (map of survey filed as A2317) describes corner monumented by a 2" IP FOUND.

March 1, 2017 - James D. Rein, Professional Land Surveyor No. S-1234, we recovered a 2.5" dia. iron pipe and an old 4" sq. cedar post in flooded area. I accept the iron pipe position as being the best evidence of the original corner location. We replaced the iron pipe with an Oneida County capped 2.4" dia. x 60" long aluminum monument and made reference ties as shown in the plan.