

This form is intended to fulfill the requirements of Chapter A-E 7.08 (3)(a) thru (l) U.S. Public Land Survey Monument Location Record, Wisconsin Administrative Code. Use the reverse side of form for continuation.

U.S. PUBLIC LAND SURVEY MONUMENT LOCATION RECORD

USPLS CORNER: NW Section Corner SECTION: 33 TOWNSHIP: 38 NORTH RANGE: 8 East
 NAME OF WATERWAY FOR M.C. CORNER: N/A SECTION LINE: N/A
 (CITY)(VILLAGE)(TOWN) OF: Town of Newbold COUNTY OF: Oneida

Description of monument found or placed and all other evidence used as the basis for monument location; including monuments and related measurements required if the corner location was reestablished by lost corner proportionate methods. Also indicate name of original surveyor, original survey date and the corner monument, bearing trees, witness or other reference monuments established; including measured bearing and distance ties, from available records.

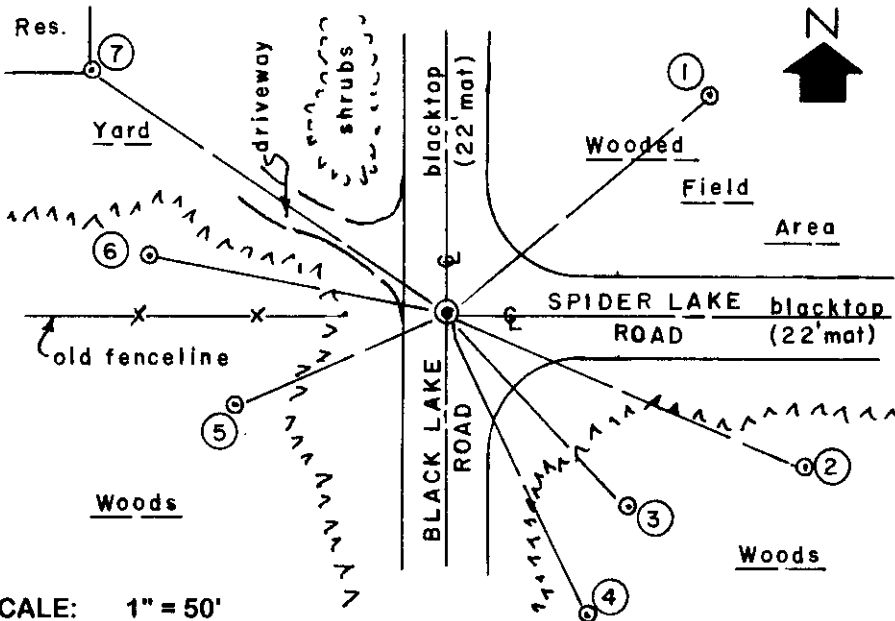
I found and accepted a PK nail in existing blacktop pavement noted by Foltz & Associates, Inc. of Minocqua, Wis. as the Section Corner per their file field notes dated May 20, 1999 and Plat of Survey dated June 10, 1999 of their resurvey and subdivision of Section 28 for survey control purposes. Due to a strong magnetic locator reading at the location, I carefully tied off the PK nail, removed it, and chiseled out an old rusted 8" spike 4" below, which I also pulled and reset with a 3/4" dia. by 12" long steel rod 1/2" below blacktop pavement surface and then patched hole. I set a standard white poly 'T' marker post 25.5' West. Recovery completed August 6, 1999; there were no direct witnesses.

In May 1859, Hiram C. Fellows/GLO set a wood post as the original corner and marked OBTs: a 10" Bw N58°W 15 links and a 10" Bw S68°W 13 links, which are all now gone in roadway area.

In 1904, D.H. Vaughan found wood post at corner but both OBTs gone; drove a 2' long iron bar bent over at top as new corner monument in existing road, but noted no new BTs. In 1906, D.H. Vaughan notes an iron pin at corner. In 1917, D. H. Vaughan again found iron he had set at corner in 1904; notes no BTs.

In 1997, Genisot & Associates of Rhinelander, Wis. set a PK nail in pavement above a strong magnetic reading as the corner location for resurvey work in Section 28, per their survey control work sheet copy on file at Foltz & Associates, Inc. who found and accepted the PK nail for their resurvey work in Section 28. I detected four(4) other strong magnetic locator readings within the roadway intersection but did not accept nor excavate for as this corner location best fits the center of roadway intersection, old fenceline West and the proportionment of distances per Vaughan and other notes.

Plan view map of monument location with bearing and distance ties to a minimum of four(4) described witness or reference monuments of concrete, natural stone, iron, live bearing trees or equivalent material. If applicable, also show a minimum of two(2) bearing and distance ties to any other monument found and not accepted; including the bearing and distance from the accepted monument.



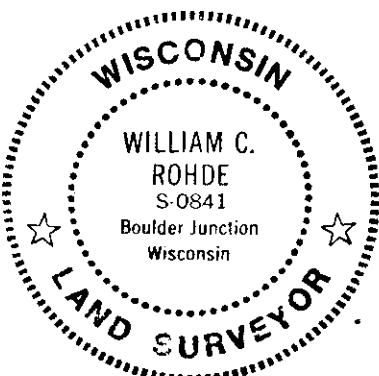
WITNESS MONUMENT TIES:

- ① New BT 12" Pw N49°E 87.94'
- ② New BT 11" Pw S67°E 102.88'
- ③ New BT 10" NW trunk of double Pw S43°E 69.38'
- ④ New BT 15.5" Or S25°E 87.14'
- ⑤ New BT 11" SE trunk of double Pr S66°W 60.87' to PK/W in left face.
- ⑥ Probable old BT 16" Pr, with blaze fissure on East face, N80°W 80.00' to PK/W in left face.
- ⑦ SE cor. of block foundation N57°W 113.80'; residence at Fire No. 5811.

SCALE: 1" = 50'

Unless otherwise indicated, all bearing tree ties are to a .25" dia. by 2.5" long PK nail with a 1.25" dia. steel washer driven into unblazed right face and a .25" dia. by 2.5" long PK nail with a 2" dia. steel washer stamped BT is also driven into unblazed face of bearing tree at DBH; the basis for measured bearings is by compass to nearest degree and all tie distances are measured horizontal by steel tape corrected to nearest 1/100th feet at standard temperature of 68° F.

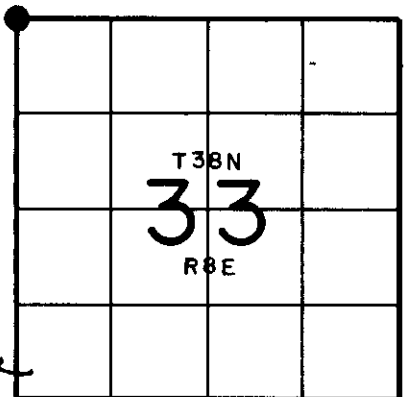
RLS SEAL:



LAND SURVEYOR CERTIFICATE:

I, William C. Rohde, hereby certify that I am duly licensed as a Professional Land Surveyor in the State of Wisconsin; that this USPLS monument location was determined by me and/or under my direct supervision and control; and that this U.S. Public Land Survey Monument Location Record is true and correct to the best of my knowledge and belief.

Signed: *William C. Rohde*
 William C. Rohde RLS 841



SECTION LOCATION MAP
 INDEX NO. V 9

Date Signed: September 6, 1999

3808 290000