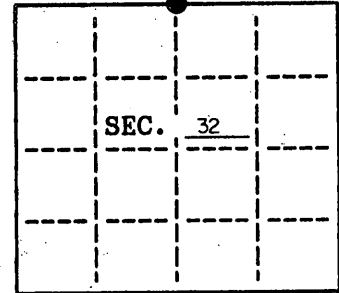


U. S. PUBLIC LAND SURVEY MONUMENT RECORD

Note: This form is intended and designed to fulfill all requirements of Wisconsin Administrative Code, Chapter A-8 7.08 U.S. Public Land Survey Monument Record (3)(a)(b)(c)(d)(e)(f)(g)(h)(i). An additional sheet may be added if necessary to conform with said requirements.

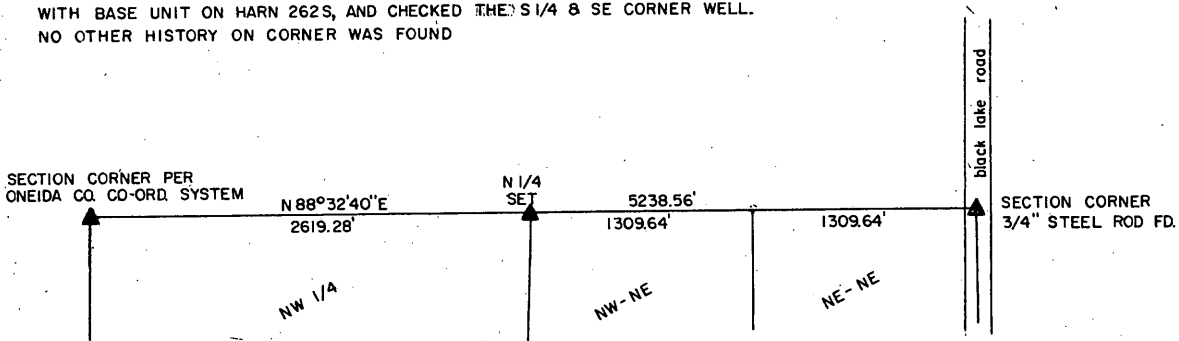
(a) CORNER LOCATION: State Plane Coordinates
 ONEIDA COUNTY
 204282.021 N(Y)
 236449.018 E(X)
 Township 38 North
 Range 8 East
 Town/City NEWBOLD
 Datum Base _____
 County of ONEIDA



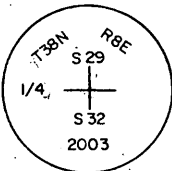
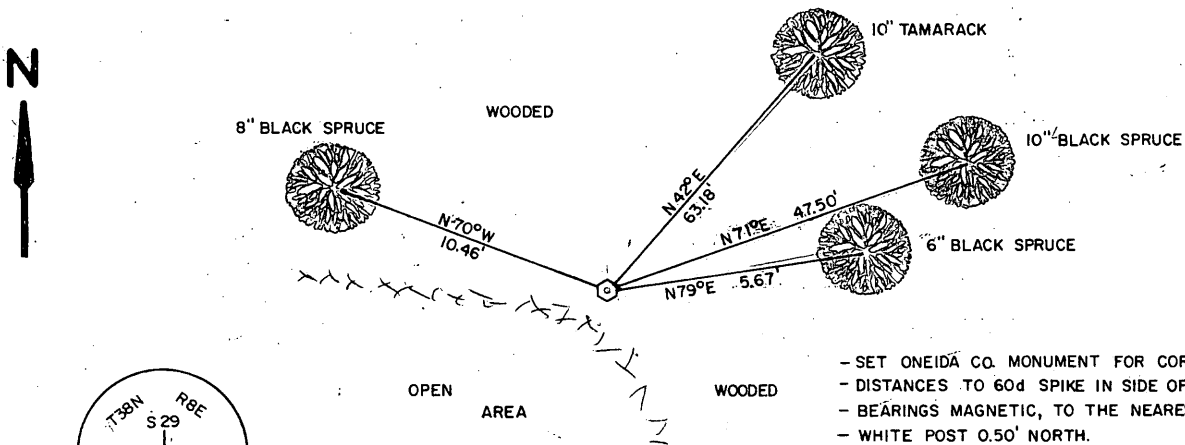
(b) HISTORY OF ORIGINAL CORNER ESTABLISHMENT
 Original Surveyor: ALEXANDER ANDERSON
 Date of Survey: Commenced 1863
 Completed 1863
 Original B.T.'S
 10" TAM. SOUTH 13 LKS.
 10" TAM. N 28°E 14 LKS.

(b)(f)(g)(h) Description of monument found at this corner and if it was accepted, state all evidence (material, testimonial, occupational, plats, records, other monuments) used as a basis for accepting. If not accepted or if nothing was found, state evidence used as basis for establishing location. If reestablished through lost corner proportionate methods, indicate all monuments, distances and directions used to establish. Indicate type of monument and sign post found or set.

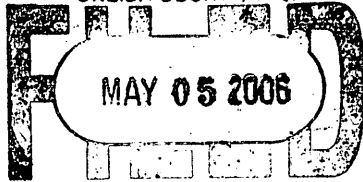
2003 - I ESTABLISHED THE CORNER POSITION DURING A SECTION SUBDIVISION WHILE WORKING IN THE NE 1/4. AFTER A CLOSE SEARCH IN THE AREA, I FOUND NO EVIDENCE OF ANY CORNER, BT'S, OR WITNESSES. I SET O.C.M. IN A WET AREA NEAR AN A.T.V./FOOT TRAIL. I USED TRIMBLE R.T.K. 5700-5800 WITH BASE UNIT ON HARN 262S, AND CHECKED THE S 1/4 & SE CORNER WELL. NO OTHER HISTORY ON CORNER WAS FOUND



(c)(d)(e) Plan view of corner with ties to at least 4 witness monuments. If in disagreement with previously established corner, show the distances between the two corners and also indicate the ties to the disputed.



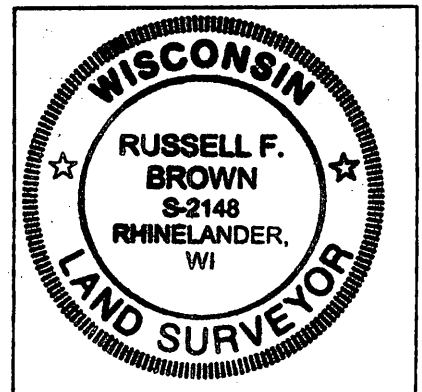
REGISTER OF DEEDS OFFICE
 ONEIDA COUNTY, WIS.



At _____ M
 THOMAS H. LEIGHTON
 REGISTER OF DEEDS

(i) I, RUSSELL F. BROWN
 hereby certify that the corner location on this record was determined by me or under my direction and control and that this U.S. Public Land Survey Monument Record is correct and complete to the best of my knowledge and belief.

Russell F. Brown 10/20/03
 Signature Date



INDEX NO. V 7

3808290020