

FILED
SEP 17 1999

AL U'Clock M
THOMAS H. LEIGHTON
Recorder's Office

This form is intended to fulfill the requirements of Chapter A-E 7.08 (3)(a) thru (i) U.S. Public Land Survey Monument Location Record, Wisconsin Administrative Code. Use the reverse side of form for continuation.

U.S. PUBLIC LAND SURVEY MONUMENT LOCATION RECORD

USPLS CORNER: West 1/4 Corner SECTION: 28 TOWNSHIP: 38 NORTH RANGE: 8 East
 NAME OF WATERWAY FOR M.C. CORNER: N/A SECTION LINE: N/A
 (CITY)(VILLAGE)(TOWN) OF: Town of Newbold COUNTY OF: Oneida

Description of monument found or placed and all other evidence used as the basis for monument location; including monuments and related measurements required if the corner location was reestablished by lost corner proportionate methods. Also indicate name of original surveyor, original survey date and the corner monument, bearing trees, witness or other reference monuments established; including measured bearing and distance ties, from available records.

Found and accepted a 3/4" dia. by 12" long steel rod driven flush in center of existing blacktop roadway by Foltz & Associates, Inc. of Minocqua, Wis. per their file field notes and Plat of Survey of Section 28 resurvey/subdivision dated June 10, 1999.

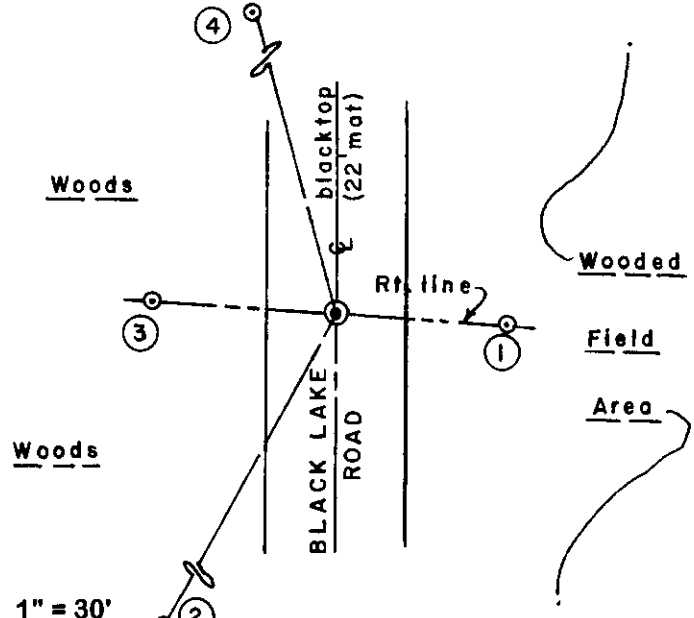
In May 1859, Hiram C. Fellows/GLO set a wood post as the original corner and marked OBTs: a ? Pw S04°W 5 links and a 10" Bw N55°W 9 links, which are all now gone in roadway area.

In 1906, D.H. Vaughan notes that he reset the corner with a driven hardwood post in center of road and marked a new BT 14" Pw stump S68°E 28.5 links. In 1910, D.H. Vaughan notes he found 1/4 post in road and SE BT stump he had set and marked in 1906. In 1917, D.H. Vaughan notes that at 39.78 chains North of the SW corner of Section 28 he found 1/4 post in road and his 14" Pw stump SE BT marked in 1906.

In May/June of 1999, Foltz and Associates, Inc. reset the corner in center of road by proportion, per previous notes by D.H. Vaughan, with a 3/4" dia. by 12" long steel rod, during their resurvey and subdivision of Section 28 for survey control purposes.

This recovery completed August 6, 1999; there were no direct witnesses other than vehicle drive-bys.

Plan view map of monument location with bearing and distance ties to a minimum of four(4) described witness or reference monuments of concrete, natural stone, iron, live bearing trees or equivalent material. If applicable, also show a minimum of two(2) bearing and distance ties to any other monument found and not accepted; including the bearing and distance from the accepted monument.



SCALE: 1" = 30'

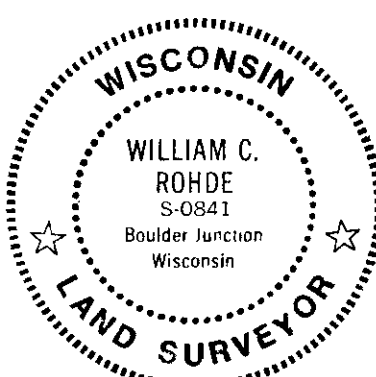
Unless otherwise indicated, all bearing tree ties are to a .25" dia. by 2.5" long PK nail with a 1.25" dia. steel washer driven into unblazed right face and a .25" dia. by 2.5" long PK nail with a 2" dia. steel washer stamped BT is also driven into unblazed face of bearing tree at DBH; the basis for measured bearings is by compass to nearest degree and all tie distances are measured horizontal by steel tape corrected to nearest 1/100th feet at standard temperature of 68° F.

WITNESS MONUMENT TIES:

- ① 1" dia. by 24" long iron pipe set, with a standard Reference Mark cap flush at top edge of roadway cut berm, S86°E 26.95'.
- ② New BT 16" Or with ingrown N/S fence wire S29°W 66.98'.
- ③ 1" dia. by 24" long iron pipe set, with a standard Reference Mark cap 2" above steep road cut slope, N86°W 28.63'.
- ④ New BT East 12" trunk of two(2) Or N15°W 128.30'.

Standard white poly 'T' marker post set 6" East of Witness Monument ①.

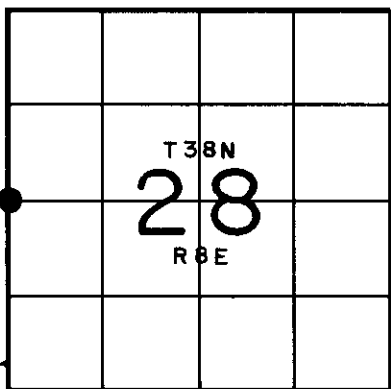
RLS SEAL:



LAND SURVEYOR CERTIFICATE:

I, William C. Rohde, hereby certify that I am duly licensed as a Professional Land Surveyor in the State of Wisconsin; that this USPLS monument location was determined by me and/or under my direct supervision and control; and that this U.S. Public Land Survey Monument Location Record is true and correct to the best of my knowledge and belief.

Signed: *William C. Rohde*
William C. Rohde RLS 841



SECTION LOCATION MAP
INDEX NO. T 9

Date Signed: September 6, 1999

3808292000