

U.S. PUBLIC LAND SURVEY MONUMENT LOCATION RECORD

Recorders Data

CORNER: NW Section SECTION: 32 TOWNSHIP 38 NORTH RANGE 8 EAST/WEST

FOR M.C. CORNER INDICATE: NAME OF WATERWAY N/A SECTION LINE N/A

~~(CITY)(VILLAGE)(TOWN)~~ OF: Newbold COUNTY OF: Oneida

Description of monument found or placed and all other evidence used as a basis for monument location; including all monuments and related measurements required if the corner location is reestablished by lost corner proportionate methods. Also indicate name of original surveyor, survey date, corner monument set and established bearing trees, witness or reference monuments with ties from available records.

Found and accepted an undisturbed 1" dia. iron pipe monument with uncapped top 1" below existing gravel roadway surface at this corner location.

In 1863, Anderson/GLO set a wood post as the original section corner and marked OBTs, a 11" Tamarack S87°W 122 lks and a 5" Tamarack N63°W 25 lks, all of which are now gone within existing roadway.

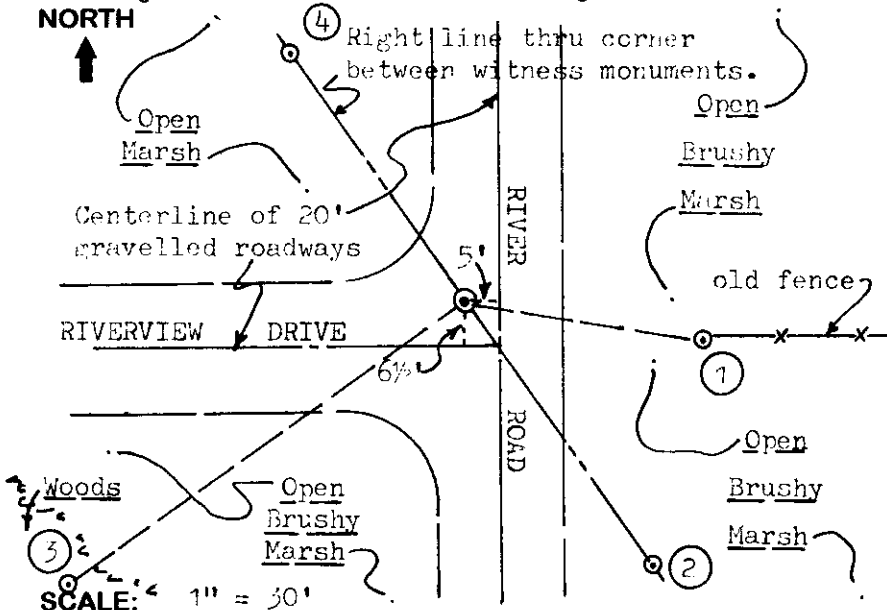
In 1962, Wincentsen/Genisot Engineering Company surveyed and subdivided Section 30 per his Plat of Survey filed as C-738 in Oneida County survey records, and denoted an iron pipe symbol at this corner location, also being the SE corner of Section 30.

Upon my query in July 1998, Kip Soder RLS advised that he had set the 1" dia. iron pipe found on the basis of his retracement of the previous 1962 Wincentsen/Genisot Engineering resurvey and subdivision of Section 30, and gave me permission to file this location record denoting the witness monuments that he had also established per notes provided to me. In so doing, I rechecked all measurements to his witness monuments and SE BT to assure that there was no disturbance; his SW Maple BT was found down and flat on ground so I remarked a new BT indicated below. A standard Oneida County BT sign and a No Hunting-Trespass sign was found on the upper West face of the SE BT.

This recovery completed August 24, 1998; there were no witnesses.

Plan view map of monument location with bearing and distance ties to a minimum of four(4) described witness or reference monuments of concrete, natural stone, iron, live bearing trees or equivalent material. If applicable, also show a minimum of two(2) bearing and distance ties to any other monument found and not accepted; including the bearing and distance from the accepted monument. Indicate the basis for bearings of reference ties if not referenced to magnetic north.

NORTH



WITNESS MONUMENT TIES:

- ① Old BT 15" Pw with upper & lower face blazes open S81°E 37.32'.
- ② Standard 2" dia. by 5' long alum. monument found with Oneida County cap stamped by S-1731(Soder) S35°E 50.74'.
- ③ New BT 7" Mr S54°W 76.25'.
- ④ Same as witness #2 found N35°W 47.64'.

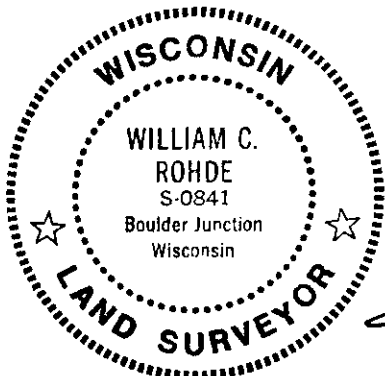
Note: Standard white poly 'T' marker post also found 19' NW.

Unless otherwise indicated, all bearing tree ties are to a .25" dia. by 2.5" long PK nail with a 1.25" dia. steel washer driven into unblazed right face and a .25" dia. by 2.5" long PK nail with a 2" dia. steel washer stamped 'BT' is also driven into unblazed face of bearing tree at DBH; the basis for measured bearings is magnetic to nearest degree and all tie distances are horizontal measure to nearest 1/100th feet.

LAND SURVEYOR CERTIFICATION:

I, William C. Rohde, hereby certify that I am a duly licensed Professional Land Surveyor in Wisconsin, that this USPLS monument location was determined by me or under my direction and control, and that this U.S. Public Land Survey Monument Location Record is true and correct to the best of my knowledge and belief.

William C. Rohde Date: 8-26-98
Signature



RLS SEAL

SHEET NO. 1 OF 1

This form is intended to fulfill requirements of Chapter A-E 7.08 (3)(a)(b)(c)(d)(e)(f)(g)(h)(i) U.S. Public Land Survey Monument Location Record, Wisconsin Administrative Code. Use reverse side for geodetic location data and/or continuation purposes.

	T38N		
	32		
	R8E		

SECTION LOCATION MAP

INDEX NO. V 5
3808300000

INDEX NO.