

U.S. PUBLIC LAND SURVEY MONUMENT RECORD

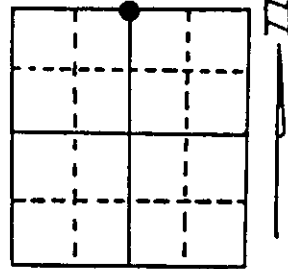
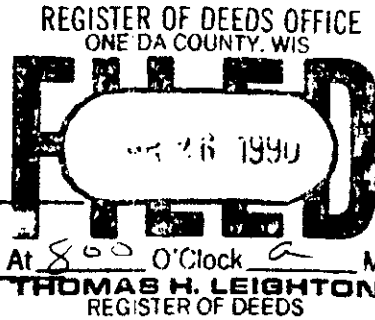
Note: This form is intended and designed to fulfill all requirements of Wisconsin Administrative Code, Chapter A-E 7.08 U.S. Public Land Survey Monument Record (3) (a) (b) (c) (d) (e) (f) (g) (h) (i). An additional sheet may be added if necessary to conform with said requirements.

(a) Corner location: Township 38 North

Range 8 East/West

Town/City/Village Newbold

County Oneida



Section 31

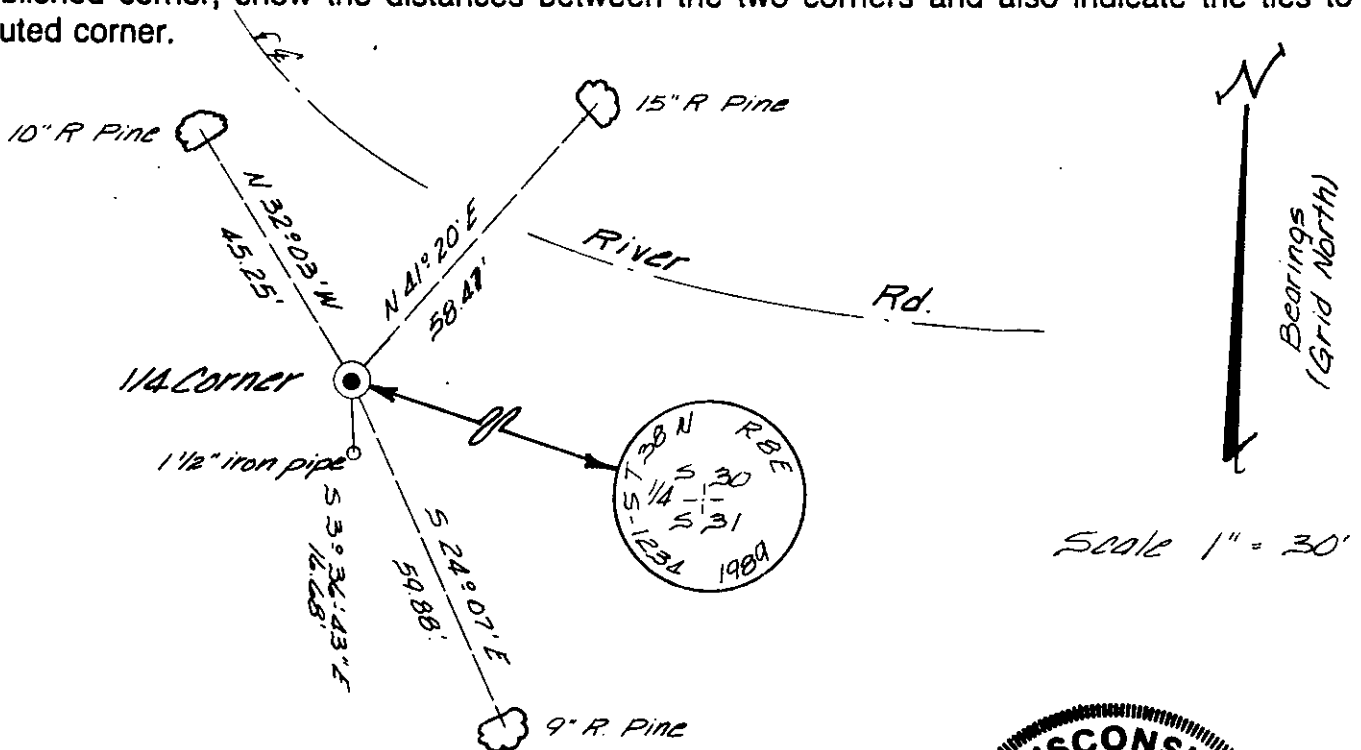
(b) (f) (g) (h) Description of monument found at this corner and if it was accepted, state all evidence (material, testimonial, occupational, plats, records, other monuments) used as a basis for accepting. If not accepted or if nothing was found, state evidence used as basis for establishing location. If reestablished through lost corner proportionate methods, indicate all monuments, distances and directions used to establish.

July 1863 - Alexander Anderson, Deputy Surveyor, set 1/4 section post. Original bearing trees: 7" Birch, S28°E, 25 links; 10" Hemlock, S82 1/2°W, 10 links.

October 1962 - F.R. Wincentsen, County Surveyor, identifies corner being monumented with an iron pipe.

April 5th, 1989 - James D. Rein, R.L.S. #1234, recovered 1 1/2" iron pipe and replaced it with a capped 2" dia. 30" long Oneida County aluminum monument. Made ties to an existing iron pipe and new bearing trees as shown in plan view. Set new plastic post 1 foot southwest of corner.

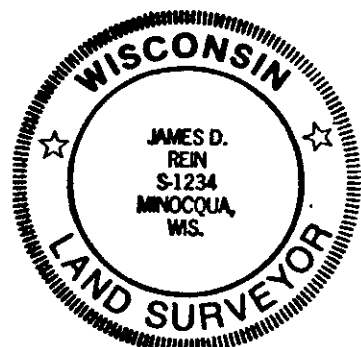
(c) (d) (e) Plan view of corner with ties to at least 4 witness monuments. If in disagreement with previously established corner, show the distances between the two corners and also indicate the ties to the disputed corner.



(i) I, James D. Rein R.L.S. #1234
 (type or print name) certify that the corner location on this record was determined by me or under my direction and control and that this U.S. Public Land Survey Monument Record is correct and complete to the best of my knowledge and belief.

Signature James D. Rein

Date April 8th, 1989



Index No. V-3

3808300020