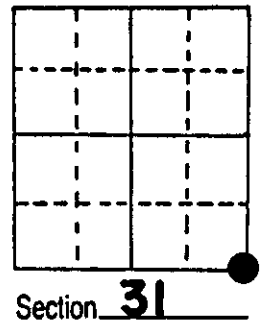


U.S. PUBLIC LAND SURVEY MONUMENT RECORD

Note: This form is intended and designed to fulfill all requirements of Wisconsin Administrative Code, Chapter A-E 5.02, U.S. Public Land Survey Monument Record (3) (a) (b) (c) (d) (e) (f) (g) (h) (i). An additional sheet may be added if necessary to conform with said requirements.

(a) Corner location: Township 38 North
 Range 8 East West
 Town/City/Village of NEWBOLD
 County of ONEIDA

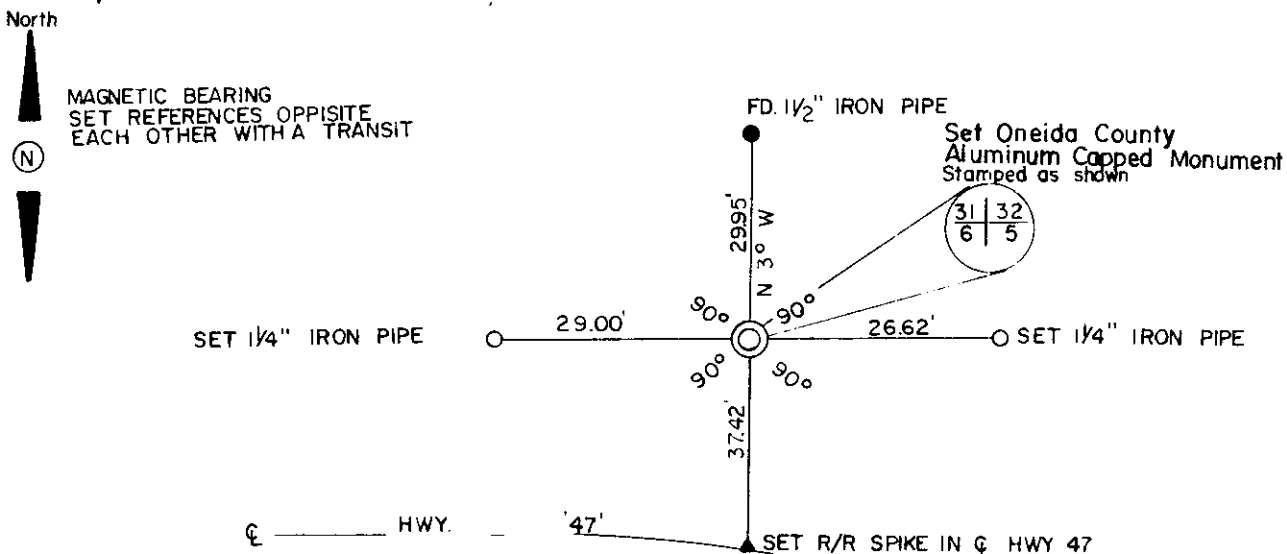


(b) (f) (g) (h) Description of monument found at this corner and if it was accepted, state all evidence (material, testimonial, occupational, plats, records, other monuments) used as a basis for accepting. If not accepted or if nothing was found, state evidence used as basis for establishing location. If reestablished through lost corner proportionate methods, indicate all monuments, distances and directions used to establish.

- 1860 Alferd Millard set original corner @ 80.00ch.
- 1918 D. H. Vaughan states S.W. cor. Sec 32 is in center of road, no bearings near, run N 20.01½ to 1/8 post I set many years ago. He does not state if this is an orig. position.
- 1947 F. R. Wincentzen was at corner
- 1956 R. E. Bandow states section cor in road, witness pipes 30' N. & S.
- 1976 L. J. Schmit has P.K. nail for corner and witness pipe 30.00' north.

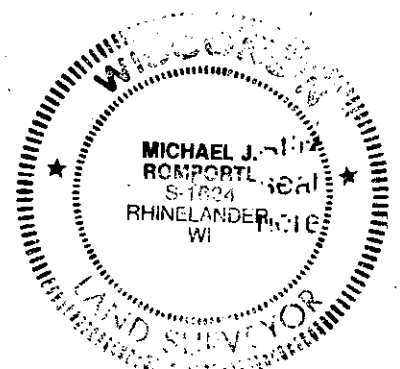
At the corner I found no evidence of original corner. I re-established the corner from Genisot Map # 6388 (Schmit). This position checks to the north with that of R.E. BAndows distances.. Hwy. 47 has been reconstructed and the corner now is in the side slope of the highway which agrees with the extention of the center line of the road to the east. I set an Oneida County Aluminum Capped monument and witnessed it as shown below.

(c) (d) (e) Plan view of corner with ties to at least 4 witness monuments. If in disagreement with previously established corner, show the distances between the two corners and also indicate the ties to the disputed corner.



(i) I, MICHAEL J. ROMPORTL R.L.S. 1624
 (type or print name) certify that the corner location on this record was determined by me or under my direction and control and that this U.S. Public Land Survey Monument Record is correct and complete to the best of my knowledge and belief.

Michael J. Romportl DECEMBER 4, 1984
 Signature Date
 GENISOT & ASSOCIATES, INC.
 RHINELANDER, WIS.



Index No. 2-5

3808 310000

U.S. PUBLIC LAND SURVEY MONUMENT LOCATION RECORD

Recorders Data

CORNER: NW Section SECTION: 5 TOWNSHIP 37 NORTH RANGE 8 EAST/WEST

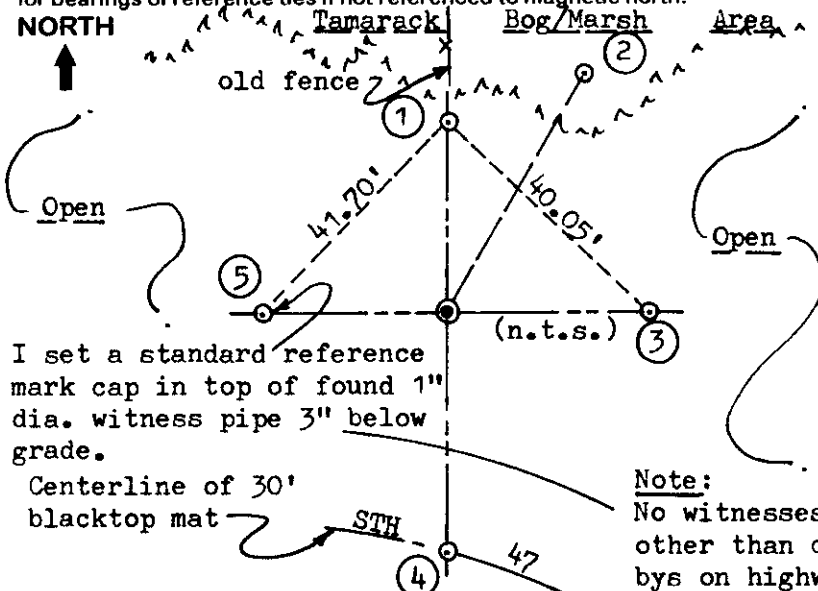
FOR M.C. CORNER INDICATE: NAME OF WATERWAY N/A SECTION LINE N/A

(CITY)(VILLAGE)(TOWN) OF: Newbold COUNTY OF: Oneida

Description of monument found or placed and all other evidence used as a basis for monument location; including all monuments and related measurements required if the corner location is reestablished by lost corner proportionate methods. Also indicate name of original surveyor, survey date, corner monument set and established bearing trees, witness or reference monuments with ties from available records.

Note: Removed/replaced monuments were left flat on grade next to new monuments set. This corner location was reestablished by M. J. Romportl/Genisot & Associates, Inc. of Rhinelander, Wis. per USPLS Monument Location Record dated Dec. 4, 1984 filed in Oneida County records; however, his standard 2" dia. aluminum pipe monument set at the corner with stamped Oneida Co. cap was found bent and without cap 3" below existing grade, his North and East witness iron pipe monuments were found tipped and his railroad spike South in blacktop pavement centerline was gone. Upon notice to Romportl, now Oneida County Surveyor, he approved restoration of the corner location. Therefore, I pulled the damaged aluminum pipe monument and reset the corner with a new 2" dia. by 30" long aluminum pipe monument with stamped Oneida County cap flush with existing grade. I then pulled the tipped old 1 1/4" dia. by 36" long uncapped iron pipe at his North witness corner and reset it with a 1" dia. by 24" long iron pipe with standard reference mark cap 1 1/2" below grade. I then removed the tipped old 1 1/4" dia. by 18" iron pipe at his East witness corner and reset it with a 1" dia. by 24" long iron pipe with standard reference mark cap 2" below existing grade. I then set a 3/4" dia. by 12" long steel shaft in the hole left by his RR spike in centerline joint of existing blacktop pavement South of the corner monument. I also used a transit to check that all four(4) witness monuments were on a right line thru the corner center and measured new ties indicated below. The corner falls about midway down the bank of highway fill section to level of adjoining tamarack bog/marsh area. I reset a found poly 'T' marker post 4" South of the corner monument. Recovery completed September 15, 1998.

Plan view map of monument location with bearing and distance ties to a minimum of four(4) described witness or reference monuments of concrete, natural stone, iron, live bearing trees or equivalent material. If applicable, also show a minimum of two(2) bearing and distance ties to any other monument found and not accepted; including the bearing and distance from the accepted monument. Indicate the basis for bearings of reference ties if not referenced to magnetic north.



I set a standard reference mark cap in top of found 1" dia. witness pipe 3" below grade.

Centerline of 30' blacktop mat

Note:
No witnesses other than drive-bys on highway.

SCALE: 1" = 30

Unless otherwise indicated, all bearing tree ties are to a .25" dia. by 2.5" long PK nail with a 1.25" dia. steel washer driven into unblazed right face and a .25" dia. by 2.5" long PK nail with a 2" dia. steel washer stamped 'BT' is also driven into unblazed face of bearing tree at DBH; the basis for measured bearings is magnetic to nearest degree and all tie distances are horizontal measure to nearest 1/100th feet.

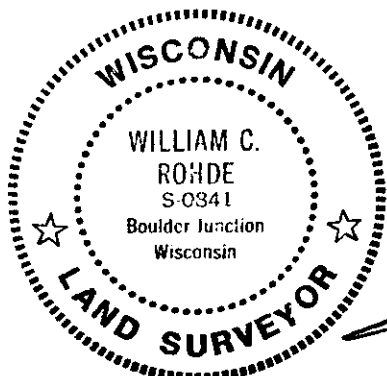
WITNESS MONUMENT TIES:

- ① Found old 1 1/4" dia. x 36" I.P. tipped North which I pulled and reset with a 1" dia. x 24" I.P. with standard reference mark cap 1 1/2" below grade, North 29.95'.
- ③ Reset an old 1 1/4" x 18" I.P. tipped 45° SE with a 1" dia. x 24" I.P. with standard reference mark cap 2" below grade, East 26.65'.
- ② New BT 8" Tam N19°E 42.82'.
- ④ Record RR spike gone but found its hole in pavement centerline where I set a 3/4" dia. by 12" long steel shaft flush, South 37.50'.
- ⑤ 1" dia. I.P. found OK 1 1/2" below grade, West 29.08'.

LAND SURVEYOR CERTIFICATION:

I, William C. Rohde, hereby certify that I am a duly licensed Professional Land Surveyor in Wisconsin, that this USPLS monument location was determined by me or under my direction and control, and that this U.S. Public Land Survey Monument Location Record is true and correct to the best of my knowledge and belief.

William C. Rohde Date: 9-27-98
Signature



RLS SEAL

SHEET NO. 1 OF 1

This form is intended to fulfill requirements of Chapter A-E 7.08 (3)(a)(b)(c)(d)(e)(f)(g)(h)(i) U.S. Public Land Survey Monument Location Record, Wisconsin Administrative Code. Use reverse side for geodetic location data and/or continuation purposes.

		5	

SECTION LOCATION MAP

INDEX NO. A-5

3808310000

INDEX NO